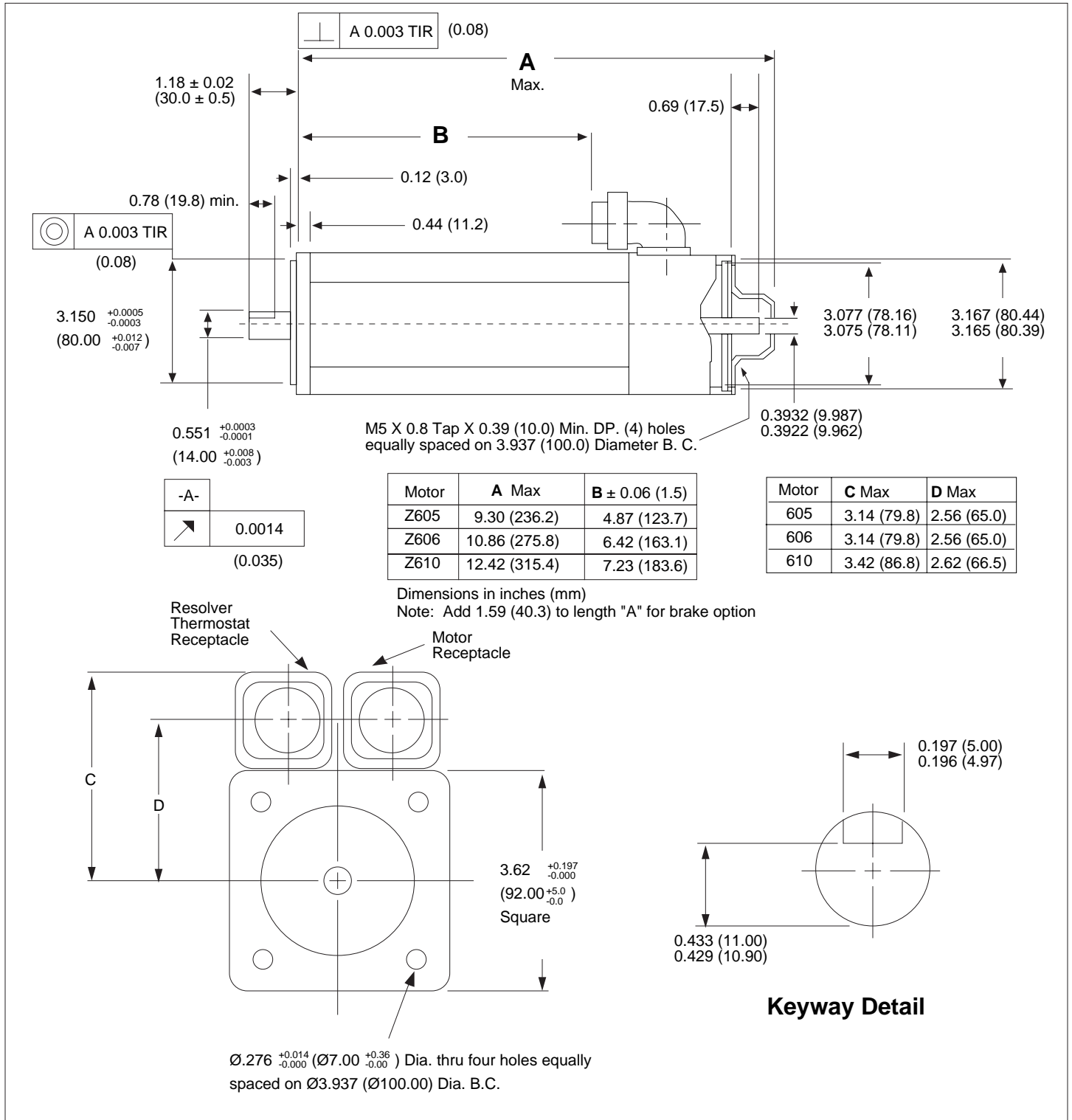
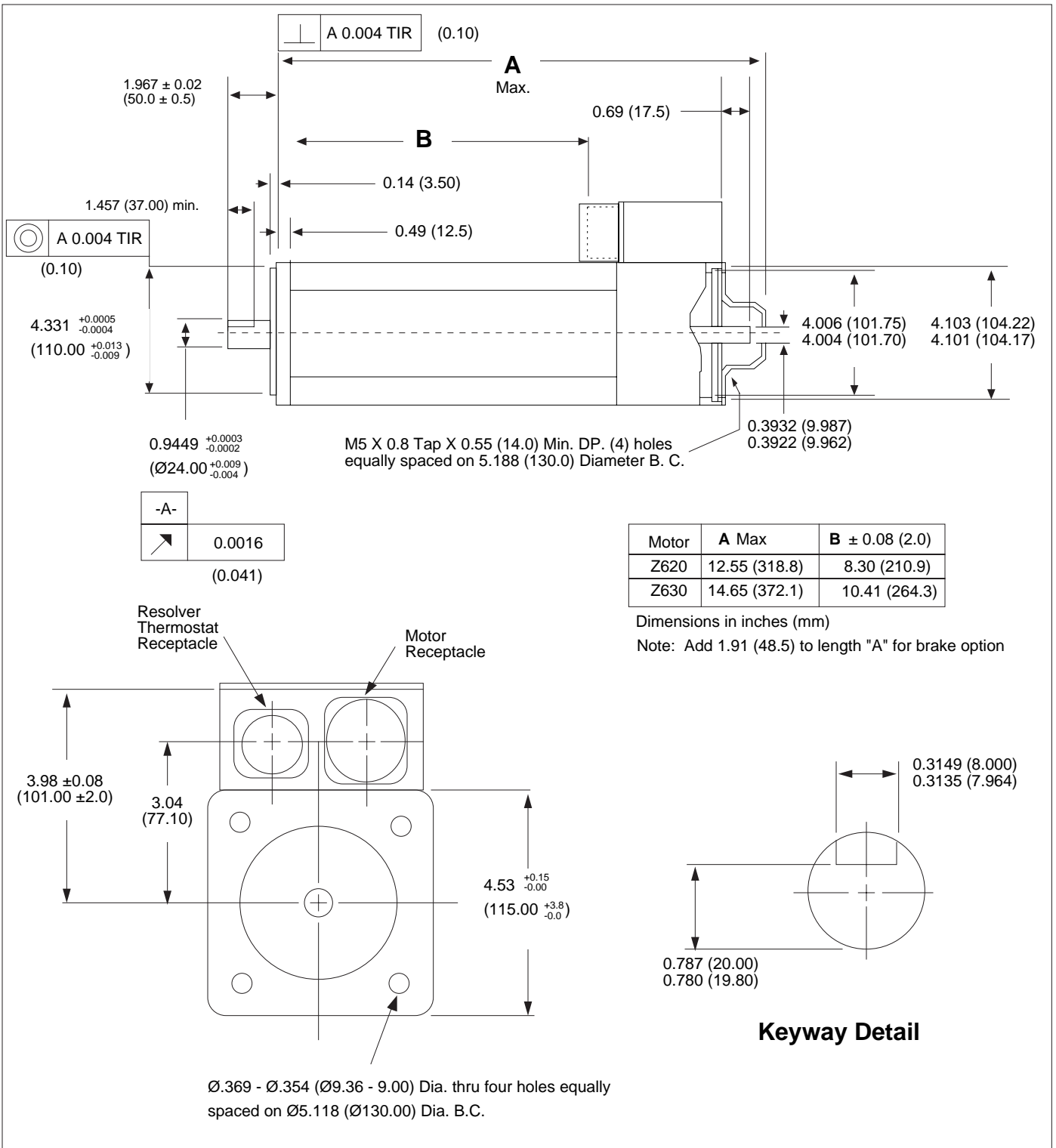


# Motor Mounting

Mount the motors with the four flange bolts that are on the front face plate. Center the motor with the pilot on the front face. The subsequent figures contain dimensional information for ZX motors (Z600, Z800, and Z900 Series).



ZX Motor Dimensions (Z605 - Z610)

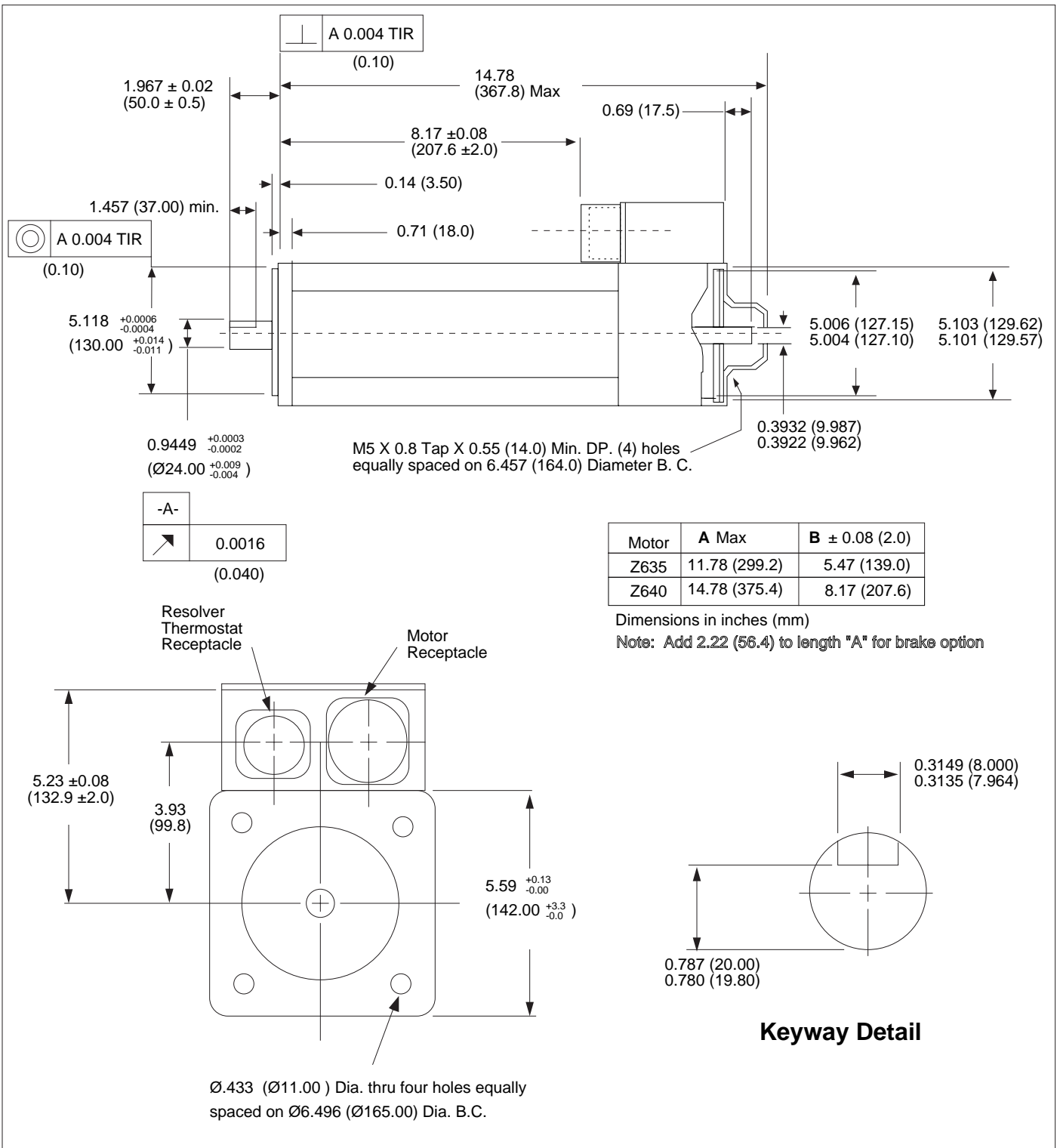


Motor	A Max	B ± 0.08 (2.0)
Z620	12.55 (318.8)	8.30 (210.9)
Z630	14.65 (372.1)	10.41 (264.3)

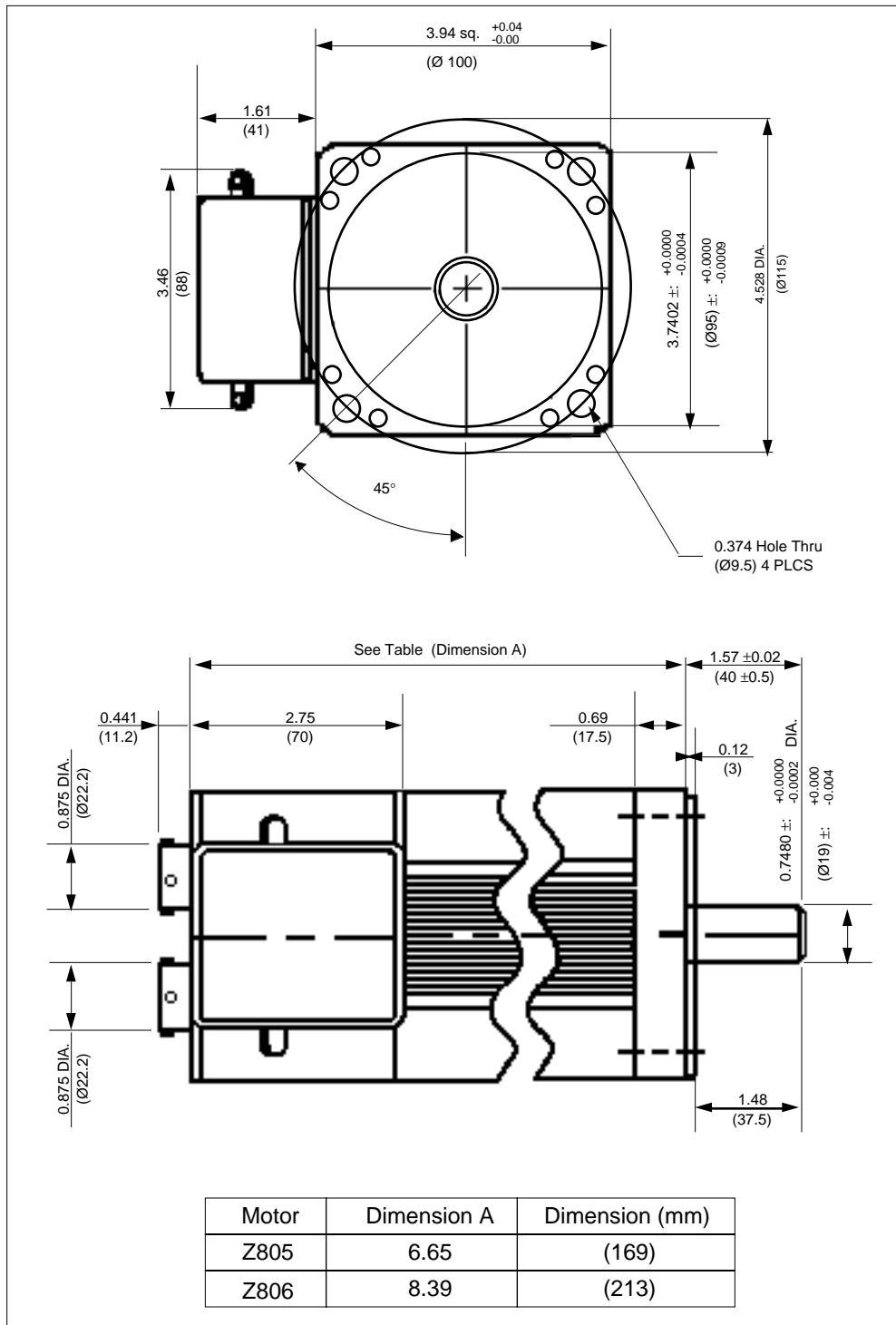
Dimensions in inches (mm)  
 Note: Add 1.91 (48.5) to length "A" for brake option

Ø.369 - Ø.354 (Ø9.36 - 9.00) Dia. thru four holes equally spaced on Ø5.118 (Ø130.00) Dia. B.C.

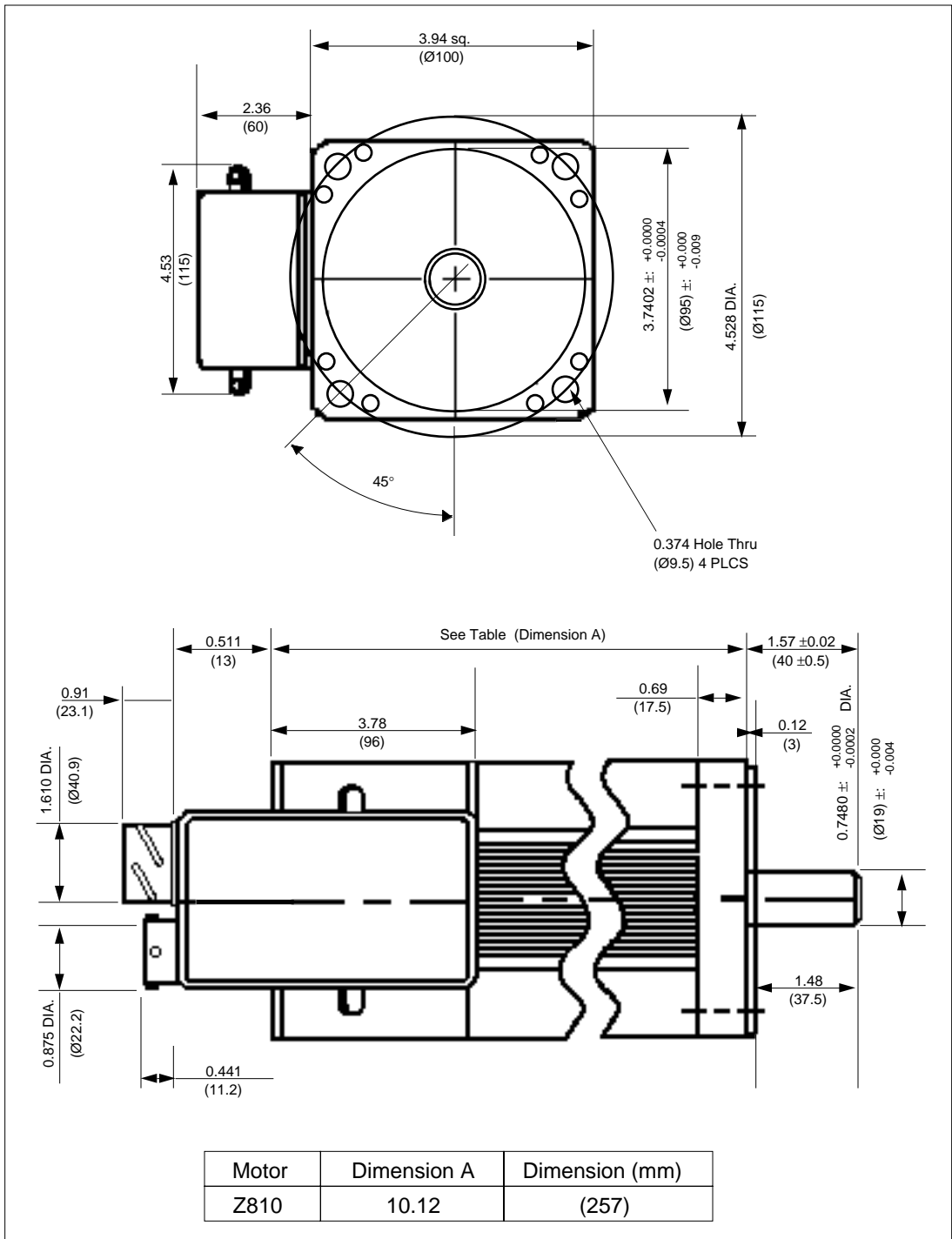
ZX Motor Dimensions (Z620 & Z630)



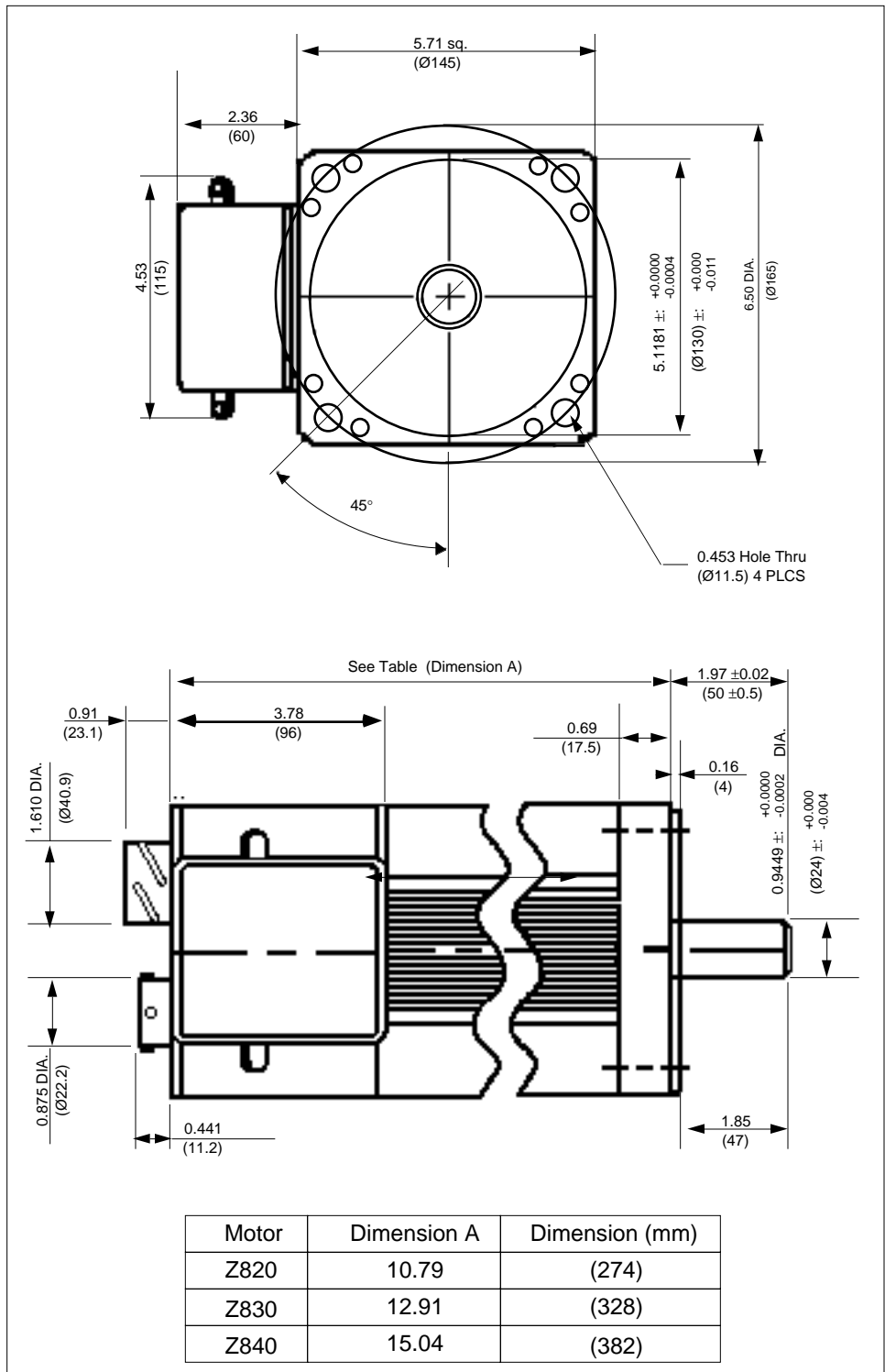
ZX Motor Dimensions (Z635 & Z640)



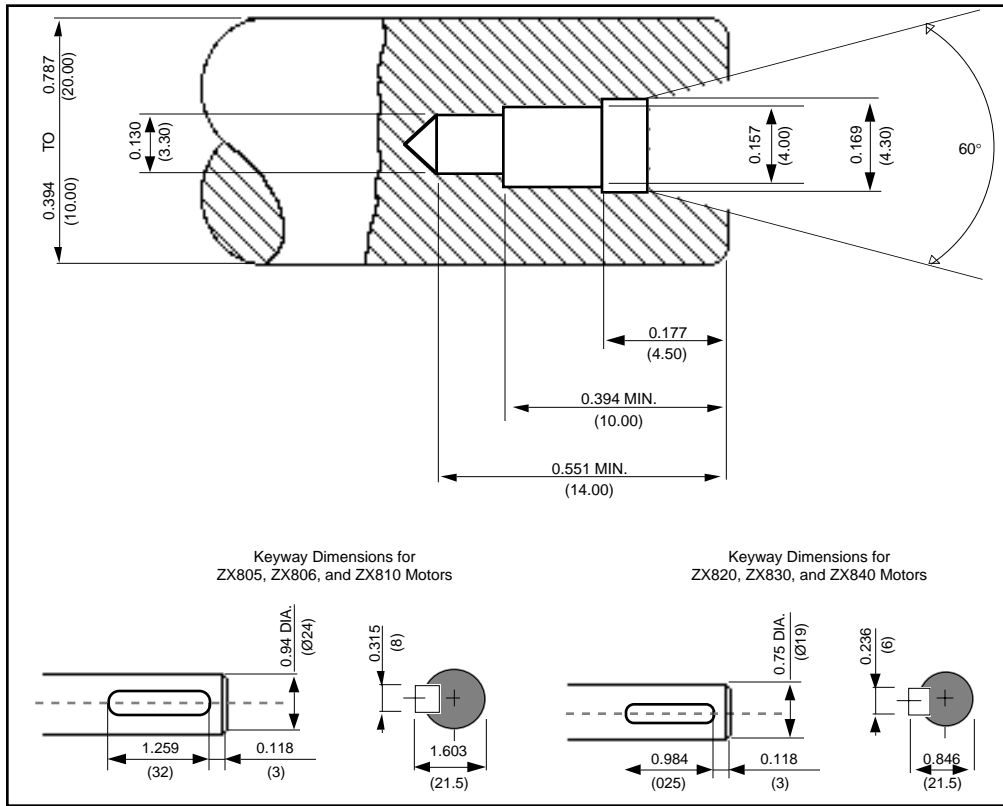
ZX Motor Dimensions (Z805 & 806)



ZX Motor Dimensions (Z810)



ZX Motor Dimensions (Z820, 830, & 840)



ZX800 Series Motor Shaft Dimensions