

**MOTOR DATA @ 85 VDC (TRAP)**

MOTOR PARAMETERS	UNITS	VALUE
HORSEPOWER	HP	0.40
KILOWATTS	KW	0.30
MAX. OPERATING SPEED	N MAX RPM	1300
SPEED @ RATED TORQUE	N RATED RPM	900
* CONTINUOUS RATED TORQUE @ 900 RPM	IN-LBS[ $Nm$ ]	28.0 [3.20]
* CONTINUOUS STALL TORQUE	IN-LBS[ $Nm$ ]	30.0 [3.39]
CONTINUOUS LINE CURRENT	AMPS	7.2
PEAK CURRENT	IN-LBS[ $Nm$ ]	75.0 [8.50]
MAX. THEORETICAL ACCEL.	AMPS	18.0
TORQUE SENSITIVITY	RAD/SEC <sup>2</sup>	65.732
BACK EMF (LINE TO LINE)	K $\epsilon$ [IN-LBS/AMP][ $Nm$ /AMP]	4.2 [0.47]
D.C. RESISTANCE (P-P)	Vrms/k $\epsilon$ rpm	3.7
INDUCTANCE (P-P)	OHMS	1.5
ROTOR INERTIA W./BRAKE	MILLIENRIES	5.1
STATIC FRICTION	Jm [IN-LBS-SEC <sup>2</sup> ][Kg-M <sup>2</sup> ]	.00114 [1.0001285]
	Tf [IN-LBS[ $Nm$ ]	0.5 [0.06]

\*25°C AMBIENT WITH A MAXIMUM CASE TEMPERATURE OF 100°C ON MOTOR. MOTOR MOUNTED ON A 10" X 10" X 1/4" ALUMINUM HEATSINK. THERMOSTAT IN STATOR WINDINGS WILL OPEN IF WINDING TEMPERATURE EXCEEDS 155°C. THIS ALLOWS FOR AN APPROXIMATE +10% HEADROOM IN THE CONTINUOUS TORQUE RATING BEFORE THERMOSTAT OPENS.

**MECHANICAL NOTES:**

- AXIAL LOAD: 25 LBS MAX
- RADIAL LOAD: 40 LBS MAX @ 1" FROM FACE
- MOTOR SEALED TO IP65.
- MOTOR WEIGHT: 11.5 LBS. [ 5.2 Kg]
- MOTOR FINISH: BLACK EPOXY
- MOTOR OUTPUT SHAFT: STAINLESS STEEL
- INCHES (MILLIMETERS)

**ENCODER: (290-00052)**

OH48-2000P6-L6-5V

**FAILSAFE BRAKE:**

MIN HOLDING TORQUE: 60 IN-LBS  
INPUT VOLTAGE: 24 VOLTS

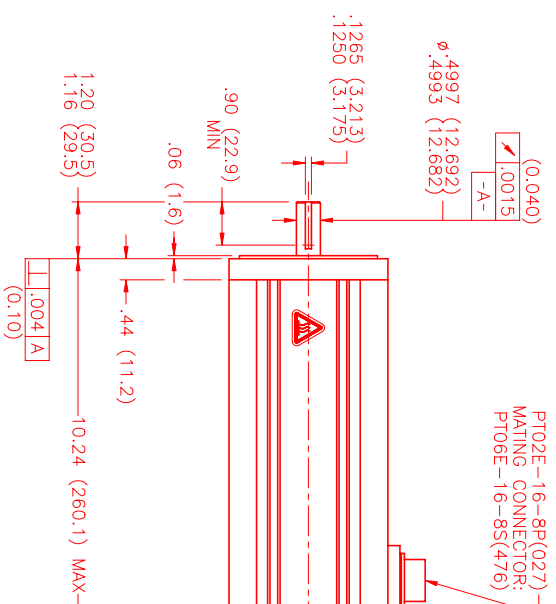
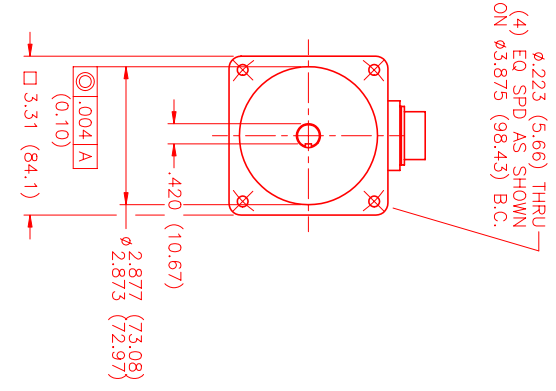
**CONNECTION CHART**

MOTOR CONNECTOR:  
PT02E-16-8P(027)  
(270-00032)

ENCODER/THERM CONNECTOR:  
PT02E-14-18P(027)  
(270-00024)

MOTOR/BRAKE WIRE LEADS	WIRE FUNCTION	WIRE COLOR
A	$\phi$ R	RED
B	$\phi$ S	BLACK
C	$\phi$ T	BLUE
D	PE GND	GRN/YEL
E	BRK SHLD	-
F	BRK (+)	DIODE
G	BRK (-)	1N4007
H	-	-

ENC/THERM WIRE LEADS	WIRE FUNCTION	WIRE COLOR
T	GROUND	BLACK
K	+5VDC	RED
B	CH A	BLUE
C	CH A\	BLUE/BLK
N	CH B	GREEN
P	CH B\	GRN/BLK
M	CH Z	YELLOW
U	CH Z\	YEL/BLK
E	CH U	BROWN
R	CH U\	BRN/BLK
F	CH V	GRAY
S	CH V\	GRAY/BLK
G	CH W	WHITE
H	CH W\	WHT/BLK
D	GND/CABLE SHLD	SHLD
A	THERM	BLACK
L	THERM	BLACK
J	GND	GRN/YEL



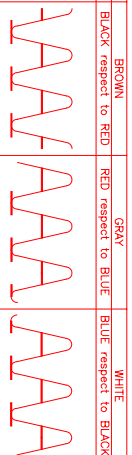
PT02E-16-8P(027)  
MATING CONNECTOR:  
PT06E-16-8S(476)

PT02E-14-18P(027)  
MATING CONNECTOR:  
PT06E-14-18S(476)

$\phi$ R(RED)  $\phi$ S(BLACK)

$\phi$ T(BLUE)  
3 PHASE - 6 POLE

MOTOR ROTATION CW (COUNTER CLOCKWISE)  
(LOOKING AT THE FACE OF THE MOTOR)



WAVE REPRESENTING HALL SENSOR

**MOTOR & HALL POSITION CHART**

REV	DESCRIPTION	DATE	APPD.
PRELIMINARY		12/19/00	AJS

NO.	PART NUMBER	DESCRIPTION	QTY.
1	MOTOR	MOTOR	1

REV	DESCRIPTION	DATE	APPD.
1	REVISED	12/19/00	AJS

NO.	PART NUMBER	DESCRIPTION	QTY.
1	MOTOR	MOTOR	1

REV	DESCRIPTION	DATE	APPD.
1	REVISED	12/19/00	AJS

NO.	PART NUMBER	DESCRIPTION	QTY.
1	MOTOR	MOTOR	1

REV	DESCRIPTION	DATE	APPD.
1	REVISED	12/19/00	AJS

NO.	PART NUMBER	DESCRIPTION	QTY.
1	MOTOR	MOTOR	1

REV	DESCRIPTION	DATE	APPD.
1	REVISED	12/19/00	AJS

NO.	PART NUMBER	DESCRIPTION	QTY.
1	MOTOR	MOTOR	1

REV	DESCRIPTION	DATE	APPD.
1	REVISED	12/19/00	AJS

NO.	PART NUMBER	DESCRIPTION	QTY.
1	MOTOR	MOTOR	1

REV	DESCRIPTION	DATE	APPD.
1	REVISED	12/19/00	AJS

NO.	PART NUMBER	DESCRIPTION	QTY.
1	MOTOR	MOTOR	1

REV	DESCRIPTION	DATE	APPD.
1	REVISED	12/19/00	AJS

NO.	PART NUMBER	DESCRIPTION	QTY.
1	MOTOR	MOTOR	1

REV	DESCRIPTION	DATE	APPD.
1	REVISED	12/19/00	AJS

NO.	PART NUMBER	DESCRIPTION	QTY.
1	MOTOR	MOTOR	1

REV	DESCRIPTION	DATE	APPD.
1	REVISED	12/19/00	AJS

NO.	PART NUMBER	DESCRIPTION	QTY.
1	MOTOR	MOTOR	1

REV	DESCRIPTION	DATE	APPD.
1	REVISED	12/19/00	AJS

NO.	PART NUMBER	DESCRIPTION	QTY.
1	MOTOR	MOTOR	1

REV	DESCRIPTION	DATE	APPD.
1	REVISED	12/19/00	AJS

NO.	PART NUMBER	DESCRIPTION	QTY.
1	MOTOR	MOTOR	1

REV	DESCRIPTION	DATE	APPD.
1	REVISED	12/19/00	AJS

NO.	PART NUMBER	DESCRIPTION	QTY.
1	MOTOR	MOTOR	1

REV	DESCRIPTION	DATE	APPD.
1	REVISED	12/19/00	AJS

NO.	PART NUMBER	DESCRIPTION	QTY.
1	MOTOR	MOTOR	1

REV	DESCRIPTION	DATE	APPD.
1	REVISED	12/19/00	AJS

NO.	PART NUMBER	DESCRIPTION	QTY.
1	MOTOR	MOTOR	1

REV	DESCRIPTION	DATE	APPD.
1	REVISED	12/19/00	AJS

NO.	PART NUMBER	DESCRIPTION	QTY.
1	MOTOR	MOTOR	1

REV	DESCRIPTION	DATE	APPD.
1	REVISED	12/19/00	AJS

NO.	PART NUMBER	DESCRIPTION	QTY.
1	MOTOR	MOTOR	1

REV	DESCRIPTION	DATE	APPD.
1	REVISED	12/19/00	AJS

NO.	PART NUMBER	DESCRIPTION	QTY.
1	MOTOR	MOTOR	1

REV	DESCRIPTION	DATE	APPD.
1	REVISED	12/19/00	AJS

NO.	PART NUMBER	DESCRIPTION	QTY.
1	MOTOR	MOTOR	1

REV	DESCRIPTION	DATE	APPD.
1	REVISED	12/19/00	AJS

NO.	PART NUMBER	DESCRIPTION	QTY.
1	MOTOR	MOTOR	1

REV	DESCRIPTION	DATE	APPD.
1	REVISED	12/19/00	AJS

NO.	PART NUMBER	DESCRIPTION	QTY.
1	MOTOR	MOTOR	1

REV	DESCRIPTION	DATE	APPD.
1	REVISED	12/19/00	AJS

NO.	PART NUMBER	DESCRIPTION	QTY.
1	MOTOR	MOTOR	1

REV	DESCRIPTION	DATE	APPD.
1	REVISED	12/19/00	AJS

NO.	PART NUMBER	DESCRIPTION	QTY.
1	MOTOR	MOTOR	1

REV	DESCRIPTION	DATE	APPD.
1	REVISED	12/19/00	AJS

NO.	PART NUMBER	DESCRIPTION	QTY.
1	MOTOR	MOTOR	1

REV	DESCRIPTION	DATE	APPD.
1	REVISED	12/19/00	AJS

NO.	PART NUMBER	DESCRIPTION	QTY.
1	MOTOR	MOTOR	1

REV	DESCRIPTION	DATE	APPD.
1	REVISED	12/19/00	AJS

NO.	PART NUMBER	DESCRIPTION	QTY.
1	MOTOR	MOTOR	1

REV	DESCRIPTION	DATE	APPD.
1	REVISED	12/19/00	AJS

NO.	PART NUMBER	DESCRIPTION	QTY.
1	MOTOR	MOTOR	1

REV	DESCRIPTION	DATE	APPD.
1	REVISED	12/19/00	AJS

NO.	PART NUMBER	DESCRIPTION	QTY.
1	MOTOR	MOTOR	1

REV	DESCRIPTION	DATE	APPD.
1	REVISED	12/19/00	AJS

NO.	PART NUMBER	DESCRIPTION	QTY.
1	MOTOR	MOTOR	1

REV	DESCRIPTION	DATE	APPD.
1	REVISED	12/19/00	AJS

NO.	PART NUMBER	DESCRIPTION	QTY.
1	MOTOR	MOTOR	1

REV	DESCRIPTION	DATE	APPD.
1	REVISED	12/19/00	AJS

NO.	PART NUMBER	DESCRIPTION	QTY.
1	MOTOR	MOTOR	1

REV	DESCRIPTION	DATE	APPD.
1	REVISED	12/19/00	AJS

NO.	PART NUMBER	DESCRIPTION	QTY.
1	MOTOR	MOTOR	1

REV	DESCRIPTION	DATE	APPD.
1	REVISED	12/19/00	AJS

NO.	PART NUMBER	DESCRIPTION	QTY.
1	MOTOR	MOTOR	1

REV	DESCRIPTION	DATE	APPD.
1	REVISED	12/19/00	AJS

NO.	PART NUMBER	DESCRIPTION	QTY.
1	MOTOR	MOTOR	1

REV	DESCRIPTION	DATE	APPD.
1	REVISED	12/19/00	AJS

NO.	PART NUMBER	DESCRIPTION	QTY.
1	MOTOR	MOTOR	1