

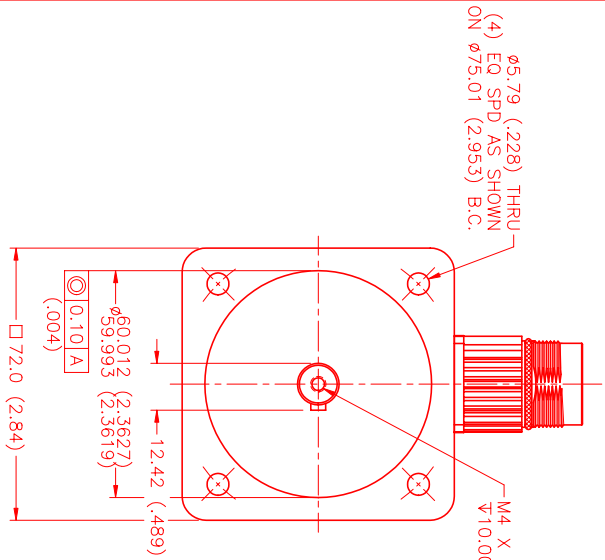
MOTOR DATA @ 230 VAC (SINE)

MOTOR PARAMETERS	UNITS	VALUE
HORSEPOWER	HP	1.3
KILOWATTS	KW RATED	0.93
MAX. OPERATING SPEED	N. MAX RPM	6000
SPEED @ RATED TORQUE	N RATED RPM	5000
* CONTINUOUS RATED TORQUE @ 4000 RPM	IN-LBS[Nm]	15.81[1.84]
* CONTINUOUS STALL TORQUE	IN-LBS[Nm]	18.81[2.12]
CONTINUOUS LINE CURRENT	AMPS(RMS/φ)	4.4
PEAK TORQUE	IN-LBS[Nm]	56.0[6.4]
PEAK CURRENT	AMPS(RMS/φ)	13.2
MAX. THEORETICAL ACCEL.	RAD/SEC ²	114,286
TORQUE SENSITIVITY	Kt [N-LBS/AMPER(S/φ)] [Nm/AMPER(S/φ)]	4.26[0.481]
BACK EMF (LINE TO LINE)	Vrms/Krpm	26.8
D.C. RESISTANCE (P-P)	OHMS	1.5
INDUCANCE (P-P)	MILLIHENRIES	3.6
ROTOR INERTIA	Jm [IN-LBS-SEC ²] [Kg-M ²]	0.00049[0.000055]
STATIC FRICTION	Tf [IN-LBS] [Nm]	1.2[0.14]

*25°C AMBIENT WITH A MAXIMUM CASE TEMPERATURE OF 85°C ON MOTOR. MOTOR MOUNTED ON A 1/2" X 1/2" X 1/2" ALUMINUM HEATSINK. THERMOSTAT IN STATOR WINDINGS WILL OPEN IF WINDING TEMPERATURE EXCEEDS 155°C. THIS ALLOWS FOR AN APPROXIMATE +10% HEADROOM IN THE CONTINUOUS TORQUE RATING BEFORE THERMOSTAT OPENS.

MECHANICAL NOTES:

- AXIAL LOAD: 35 LBS MAX @ 1" FROM FACE
- RADIAL LOAD: 35 LBS MAX @ 1" FROM FACE
- MOTOR SEALED TO IP65.
- MOTOR WEIGHT: 6.2 LBS. [2.8 kg]
- MOTOR FINISH: BLACK EPOXY
- MOTOR OUTPUT SHAFT: STAINLESS STEEL
- MILLIMETERS (INCHES)
- THIS MOTOR'S OUTPUT KEY IS A PRESS FIT.

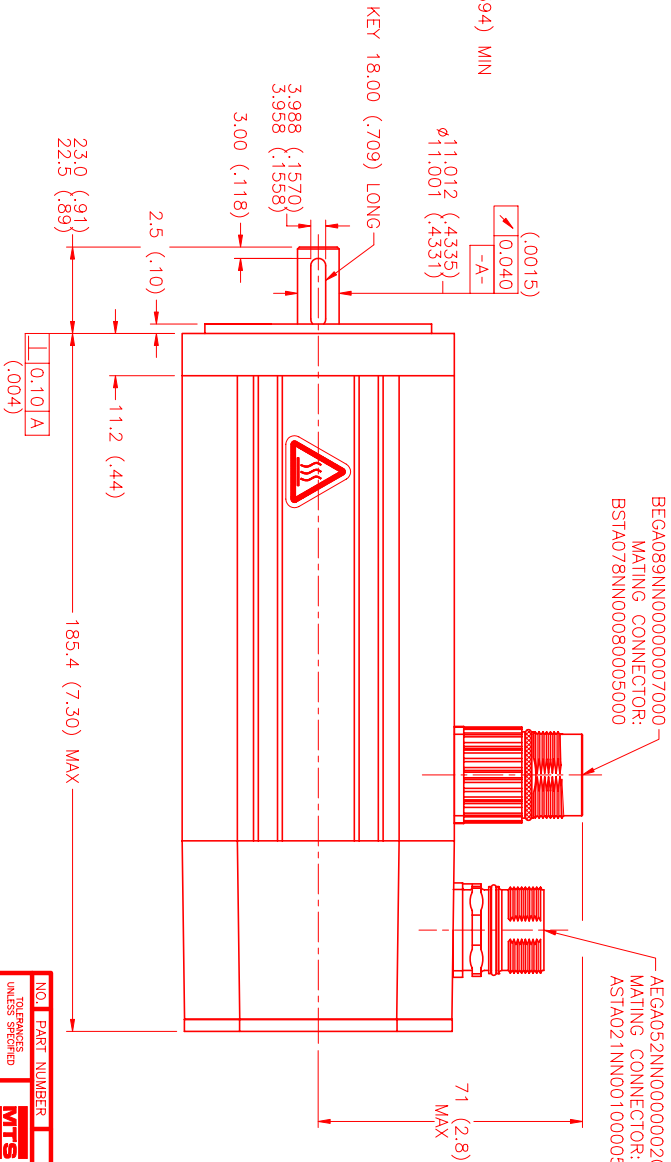


CONNECTION CHART
MOTOR/THERM CONNECTOR:
BEGA089NN00000007000
(270-00256)

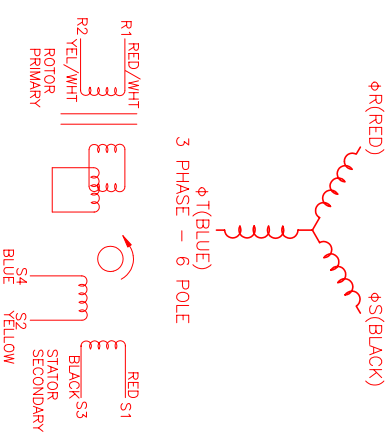
MOTOR/THERM WIRE LEADS	PIN	WIRE FUNCTION	WIRE COLOR
1	φR(U1)	RED	
2	PE GND	GRN/YEL	
3	φT(W1)	BLUE	
4	φS(V1)	BLACK	
A	-	-	
B	-	-	
C	THERM	BLACK	
D	THERM	BLACK	

RESOLVER CONNECTOR:
AEGA052NN00000020000
(270-00257)

RESOLVER WIRE LEADS	PIN	WIRE FUNCTION	WIRE COLOR
1	REF(R1)	RED/WHT	
2	REF(R2)	YEL/WHT	
3	REF GND(R2)	BLACK	
4	COS(S1)	RED	
5	COS(S2)	YELLOW	
6	SIN(S2)	BLUE	
7	SIN GND(S4)	BLUE	
8	-	-	
9	-	-	
10	-	-	
11	-	-	
12	-	-	



SCHMATIC DRAWING FOR BRUSHLESS RESOLVER
RESOLVER IS SET FOR A TBF/R AMPLIFIER



REV#	DESCRIPTION	DATE	APPD.
PRELIMINARY		7/12/01	MS

NO.	PART NUMBER	DESCRIPTION	QTY.
1	BEGA089NN00000007000	MOTOR	1
2	AEGA052NN00000020000	RESOLVER	1

UNLESS SPECIFIED	RESISTIVE SURFACE FINISH SHALL BE AS SPECIFIED IN THE PERFORMANCE SPECIFICATION.
DECIMAL ANGLES SHALL BE TO 0.01	ALL DIMENSIONS ARE TO UNLESS OTHERWISE SPECIFIED.
FRAC. ANGLES SHALL BE TO 1/32	ALL DIMENSIONS ARE TO UNLESS OTHERWISE SPECIFIED.
DATE: 7/12/01	TITLE: "B"/SINE/230/MET/TBFR/INTERCON
CHECKED:	MATERIAL:
APPROVED:	DRAWING NUMBER: MPM724BSG7H2N
	SCALE: 1:1

MTS Automation Division
 MTS Systems Corporation
 10000 MTS Way
 Northridge, CA 91324
 Phone: 818-714-0100
 Fax: 818-714-0101
 Email: sales@mts.com