

MOTOR DATA @ 48 VDC (TRAP)

MOTOR PARAMETERS	UNITS	VALUE
HORSEPOWER	HP	0.6
KILOWATTS	KW RATED	0.4
MAX. OPERATING SPEED	N. MAX RPM	4500
SPEED @ RATED TORQUE	N RATED RPM	3500
* CONTINUOUS RATED TORQUE @ 3500 RPM	IN-LBS[Nm]	10.0[1.13]
* CONTINUOUS STALL TORQUE	IN-LBS[Nm]	11.3[1.28]
CONTINUOUS LINE CURRENT	AMPS	2.0
PEAK TORQUE	IN-LBS[Nm]	34.0[3.8]
PEAK CURRENT	AMPS	5.9
MAX. THEORETICAL ACCEL.	RAD/SEC ²	130,000
TORQUE SENSITIVITY	Kt IN-LB/AMP[Nm/AMP]	5.74[0.649]
BACK EMF (LINE TO LINE)	±10% Vrms/Krpm	51.1
D.C. RESISTANCE (P-P)	±10% OHMS	15
INDUCTANCE (P-P)	±10% MILLIHENRIES	29
ROTOR INERTIA	Jm[IN-LBS-SEC ²]Kg-M ²	0.00027[0.000031]
STATIC FRICTION	Tf	0.8[0.09]

*25°C AMBIENT WITH A MAXIMUM CASE TEMPERATURE OF 85°C ON MOTOR. MOTOR MOUNTED ON A 1/2" X 1/2" X 1/2" ALUMINUM HEATSINK. THERMOSTAT IN STATOR WINDINGS WILL OPEN IF WINDING TEMPERATURE EXCEEDS 155°C. THIS ALLOWS FOR AN APPROXIMATE +10% HEADROOM IN THE CONTINUOUS TORQUE RATING BEFORE THERMOSTAT OPENS.

MECHANICAL NOTES:

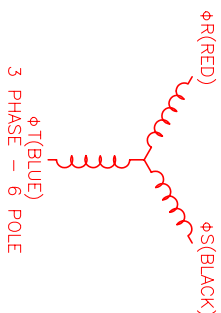
- AXIAL LOAD: 20 LBS MAX
- RADIAL LOAD: 35 LBS MAX @ 1" FROM FACE
- MOTOR SEALED TO IP65.
- MOTOR WEIGHT: 4.1 LBS. [1.9 Kg]
- MOTOR FINISH: BLACK EPOXY
- MOTOR OUTPUT SHAFT: STAINLESS STEEL
- MILLIMETERS (INCHES)
- THIS MOTOR'S OUTPUT KEY IS A PRESS FIT.

ENCODER: (290-00155)
OH35-1000P6-L6-5V

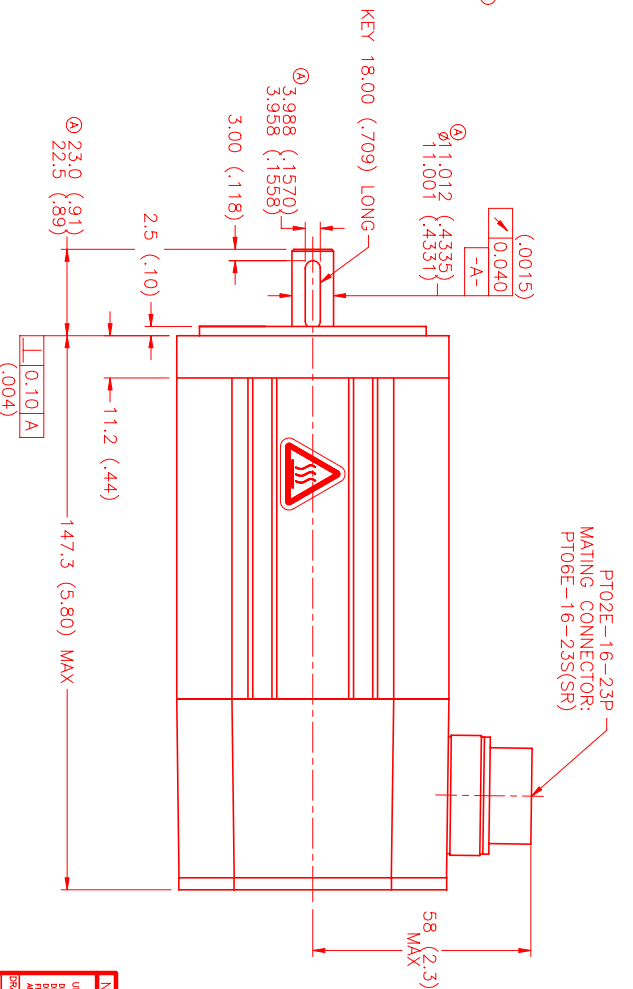
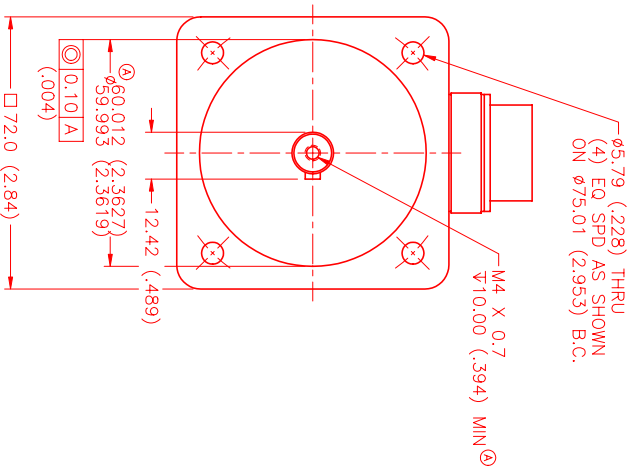
CONNECTION CHART MOTOR/ENCODER/THERM CONNECTOR: PT02E-16-23P(02T) (270-00219)

ENC/THERM WIRE LEADS	WIRE FUNCTION	WIRE COLOR
T	GROUND	BLACK
E	+5VDC	RED
F	CH A	BLUE
U	CH A	BLUE/BLK
G	CH B	GREEN
V	CH B	GRN/BLK
H	CH Z	YELLOW
W	CH Z	YEL/BLK
J	CH U	BROWN
K	CH U	BRN/BLK
X	CH V	GRAY
L	CH V	GRAY/BLK
Y	CH W	WHITE
M	CH W	WHT/BLK
N	GND/CABLE	SHLD
R	THERM	BLACK
S	THERM	BLACK
P	-	-
Z	-	-

MOTOR WIRE LEADS	PIN	WIRE FUNCTION	WIRE COLOR
A	φR	RED	RED
B	φS	BLACK	BLACK
C	φT	BLUE	BLUE
D	PE GND	GRN/YEL	GRN/YEL



*MOTOR ROTATION CCW (COUNTER CLOCKWISE)
(LOOKING AT THE FACE OF THE MOTOR)



NO.	PART NUMBER	DESCRIPTION	QTY.
1	MPM722CTL7JM1N	MOTOR	1

REV.	DESCRIPTION	DATE	APP.
PRELIMINARY		3/12/99	LIN
A	E.C.O. - 558	2/2/00	AJS

NO.	DATE	BY	CHKD.	APP.
DESIGNED	3/12/99	LIN		
CHECKED				
APPROVED				

MTS Automation Division

MTS Systems Corporation

SCALE: 1:1