

MOTOR DATA @ 230 VAC (TRAP)

MOTOR PARAMETERS	UNITS	VALUE
HORSEPOWER	HP	0.47
KILOWATTS	KW	0.35
MAX. OPERATING SPEED	N. MAX RPM	4000
SPEED @ RATED TORQUE	RPM	3000
* CONTINUOUS RATED TORQUE @ 3000 RPM	IN-LBS[Nm]	10.0[1.13]
* CONTINUOUS STALL TORQUE	IN-LBS[Nm]	11.3[1.28]
CONTINUOUS LINE CURRENT	AMPS	2.0
PEAK TORQUE	IN-LBS[Nm]	34.0[3.8]
PEAK CURRENT	AMPS	5.9
MAX. THEORETICAL ACCEL.	RAD/SEC ²	130,000
TORQUE SENSITIVITY	Kt IN-LBS/AMP[Nm/AMP]	5.74[0.65]
BACK EMF (LINE TO LINE)	Vrms/Krpm	51.1
D.C. RESISTANCE (P-P)	OHMS	15
INDUCTANCE (P-P)	MILLIHENRIES	29
ROTOR INERTIA W./BRAKE	Jm IN-LBS-SEC ² [Kg-M ²]	0.00034[0.000038]
STATIC FRICTION	Tf IN-LBS[Nm]	0.8[0.09]

*25°C AMBIENT WITH A MAXIMUM CASE TEMPERATURE OF 85°C ON MOTOR. MOTOR MOUNTED ON A 1/2" X 1/2" X 1/2" ALUMINUM HEAT SINK. THERMOSTAT IN STATOR WINDINGS WILL OPEN IF WINDING TEMPERATURE EXCEEDS 155°C. THIS ALLOWS FOR AN APPROXIMATE +10% HEADROOM IN THE CONTINUOUS TORQUE RATING BEFORE THERMOSTAT OPENS.

MECHANICAL NOTES:

- AXIAL LOAD: 20 LBS. MAX
- RADIAL LOAD: 35 LBS. MAX @ 1" FROM FACE
- MOTOR SEALED TO IP65.
- MOTOR WEIGHT: 5.3 LBS. [2.4 Kg]
- MOTOR FINISH: BLACK EPOXY
- MOTOR OUTPUT SHAFT: STAINLESS STEEL
- MILLIMETERS (INCHES)
- THIS MOTOR'S OUTPUT KEY IS A PRESS FIT.

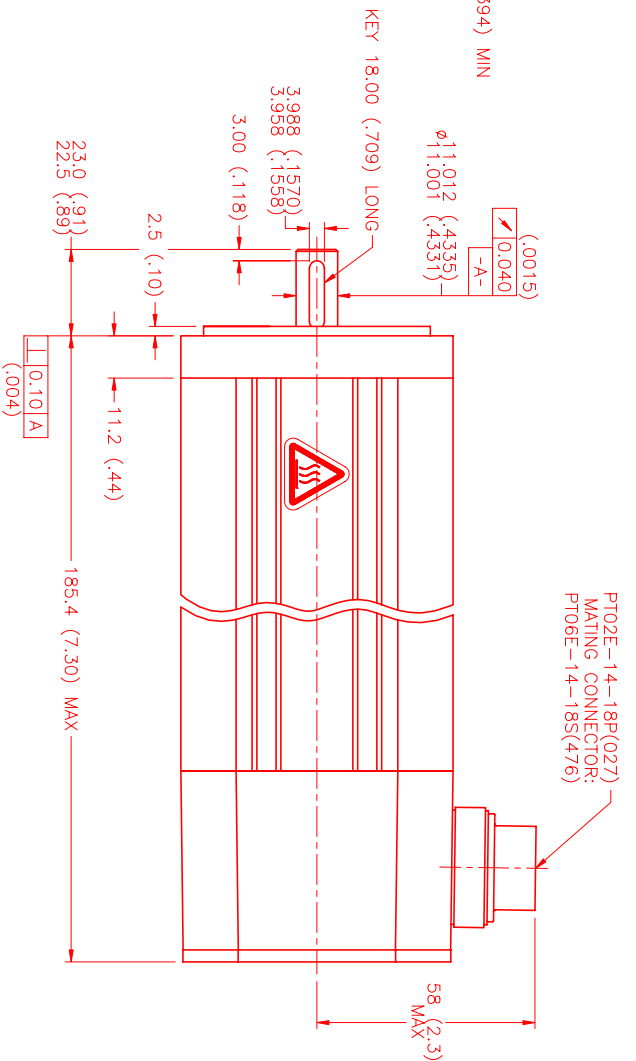
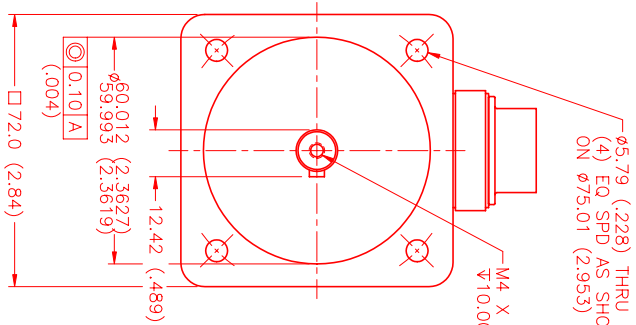
FAILSAFE BRAKE:

MIN. HOLDING TORQUE: 24 IN-LBS
INPUT VOLTAGE: 24 VOLTS

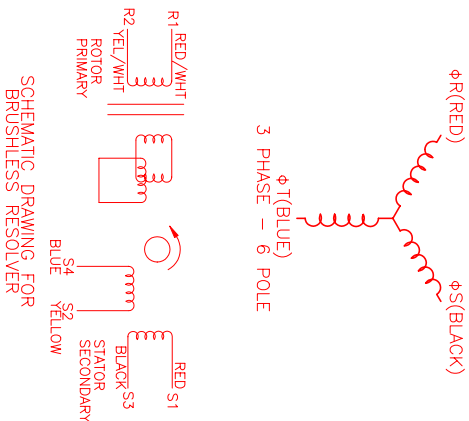
CONNECTION CHART

MOTOR/THERM./RES./BRK CONNECTOR:
PT02E-14-18P(027)
(270-00024)

MTR./RES./THERM	WIRE LEADS	WIRE COLOR
PIN	FUNCTION	
A	ΦR	RED
B	ΦS	BLACK
C	ΦT	BLUE
D	PE GND	GRN/YEL
U	THERM	BLACK
N	THERM	BLACK
H	SIN	YELLOW
G	COS GND	BLACK
S	COS	RED
F	SIN GND	BLUE
R	REF WND	YEL/WHI
E	REF	RED/WHI
J	RES SHLD	GRN/YEL
K	BRK (+)	□ DIODE
L	BRK (-)	□ IN4007
M	BRK SHLD	-
P	-	-
T	-	-



PT02E-14-18P(027)
MATING CONNECTOR:
PT06E-14-18S(476)



REV.	DESCRIPTION	DATE	APP.
PRELIMINARY		3/28/00	LIN

MTS
C:/INP/230/MET/RES/CONV/BRK
Drawing Number: MPM722CTG7G1R

REVISIONS

NO.	PART NUMBER	DESCRIPTION	QTY.
UNLESS SPECIFIED			

DESIGN: MDS # 205	DATE: 3/28/00	SCALE: 1:1
DESIGN: MDS # 200		
DESIGN: MDS # 172		
ANGEL		
DRAWING: MPM722CTG7G1R		

APPROVED:	
-----------	--