

② MOTOR DATA @ 230 VAC (TRAP)

MOTOR PARAMETERS	UNITS	VALUE
HORSEPOWER	HP RATED	.48
KILOWATTS	KW RATED	.35
MAX. OPERATING SPEED	N. MAX RPM	6000
SPEED @ RATED TORQUE	N RATED RPM	5000
* CONTINUOUS RATED TORQUE @ 5000 RPM	IN-LBS[Nm]	6.0[0.68]
* CONTINUOUS STALL TORQUE	IN-LBS[Nm]	10.0[1.13]
CONTINUOUS LINE CURRENT	AMPS	3.1
PEAK TORQUE	IN-LBS[Nm]	30.0[3.4]
PEAK CURRENT	AMPS	9.4
MAX. THEORETICAL ACCEL.	RAD/SEC <sup>2</sup>	163.043
TORQUE SENSITIVITY	Kt IN-LBS/AMPI Nm/AMP	3.2[.36]
BACK EMF (LINE TO LINE)	Vrms/Krpm	28.3
D.C. RESISTANCE (P-P)	OHMS	7.0
INDUCTANCE (P-P)	MILLIHENRIES	11.0
ROTOR INERTIA W/ BRAKE	Jm IN-LBS-SEC <sup>2</sup> Kg-M <sup>2</sup>	0.000184[.000207]
STATIC FRICTION	Tf IN-LBS[Nm]	0.8[0.09]

\*25°C AMBIENT WITH A MAXIMUM CASE TEMPERATURE OF 100°C ON MOTOR. MOTOR MOUNTED ON A 10" X 10" X 1/4" ALUMINUM HEATSINK. THERMOSTAT IN STATOR WINDINGS WILL OPEN IF WINDING TEMPERATURE EXCEEDS 155°C. THIS ALLOWS FOR AN APPROXIMATE +10% HEADROOM IN THE CONTINUOUS TORQUE RATING BEFORE THERMOSTAT OPENS.

MECHANICAL NOTES:

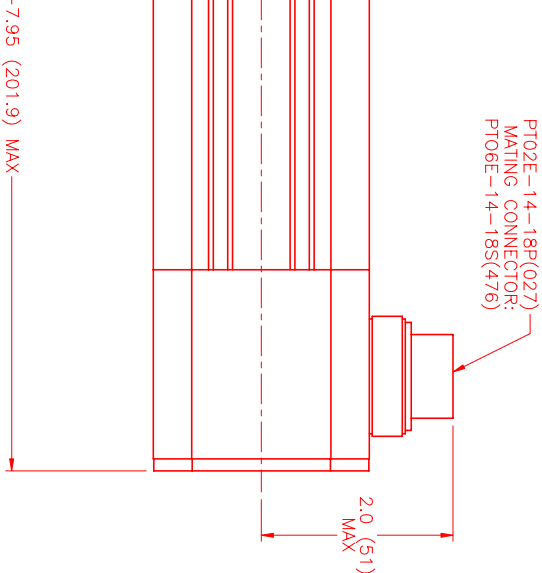
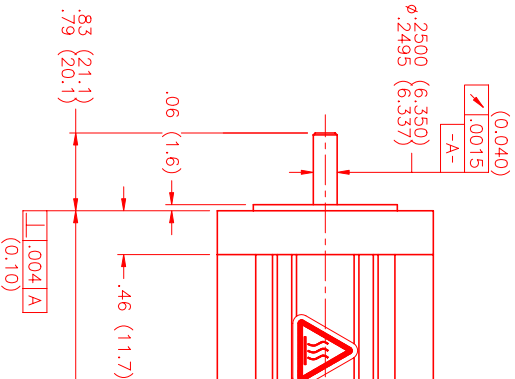
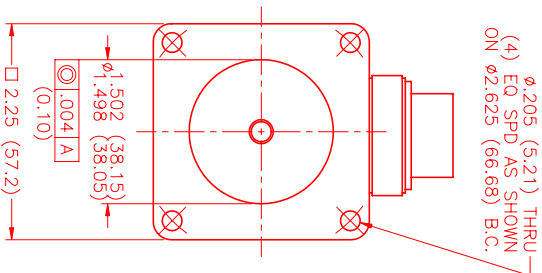
1. AXIAL LOAD: 15 LBS MAX
2. RADIAL LOAD: 20 LBS MAX @ 1" FROM FACE
3. MOTOR SEALED TO IP65.
4. MOTOR WEIGHT: 4.5 LBS [ 2.0 Kg]
5. MOTOR FINISH: BLACK EPOXY
6. MOTOR OUTPUT SHAFT: STAINLESS STEEL
7. INCHES (MILLIMETERS)

FAILSAFE BRAKE:

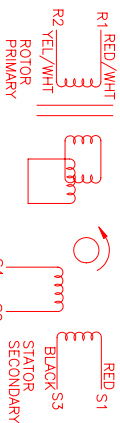
MIN HOLDING TORQUE: 10 IN-LBS  
INPUT VOLTAGE: 24 VOLTS

CONNECTION CHART  
MOTOR/THERM/RES/BRAKE CONNECTOR:  
PT02E-14-18P(027)  
(270-00024)

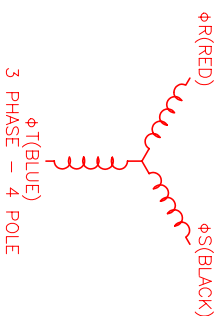
MTR/THERM/RES/BRK WIRE LEADS	PIN	WIRE FUNCTION	WIRE COLOR
A	φR	RED	RED
B	φS	BLACK	BLACK
C	φT	BLUE	BLUE
D	PE GND	GRN/YEL	GRN/YEL
U	THERM	BLACK	BLACK
N	THERM	BLACK	BLACK
H	SIN	YELLOW	YELLOW
G	COS GND	BLACK	BLACK
S	COS	RED	RED
F	SIN GND	BLUE	BLUE
R	REF GND	YEL/WHI	YEL/WHI
E	REF	RED/WHI	RED/WHI
J	RES SHLD	GRN/YEL	GRN/YEL
K	BRK (+)	DIODE	DIODE
L	BRK (-)	IN4007	IN4007
M	BRK SHLD	-	-
P	-	-	-
T	-	-	-



PT02E-14-18P(027)  
MATING CONNECTOR:  
PT06E-14-18S(476)



SCHEMATIC DRAWING FOR  
BRUSHLESS RESOLVER



REV.	DESCRIPTION	DATE	APP'D.
A	E.C.O. - 584	8/1/00	MVS

NO.	PART NUMBER	DESCRIPTION	QTY.
1	MPM664BTG6G1R	MOTOR	1

REV.	DATE	APP'D.	
PRELIMINARY	11/23/98	LIN	
A	E.C.O. - 584	8/1/00	MVS

NO.	PART NUMBER	DESCRIPTION	QTY.
1	MPM664BTG6G1R	MOTOR	1