

**MOTOR DATA @ 48 VDC (TRAP)**

MOTOR PARAMETERS	UNITS	VALUE
HORSEPOWER	HP RATED	.08
KILOWATTS	KW RATED	.06
MAX. OPERATING SPEED	N MAX RPM	1700
SPEED @ RATED TORQUE	N RATED RPM	550
* CONTINUOUS RATED TORQUE @ 550 RPM	IN-LBS[Nm]	9.4[1.1]
* CONTINUOUS STALL TORQUE	IN-LBS[Nm]	10.0[1.12]
CONTINUOUS LINE CURRENT	AMPS	5.0
PEAK TORQUE	IN-LBS[Nm]	30.0[3.4]
PEAK CURRENT	AMPS	15
MAX. THEORETICAL ACCEL.	RAD/SEC <sup>2</sup>	187,500
TORQUE SENSITIVITY	Kt [IN-LBS/AMP][Nm/AMP]	2.0[.23]
BACK EMF (LINE TO LINE)	Vrms/Krpm	17.8
D.C. RESISTANCE (P-P)	OHMS	3.1
INDUCTANCE (P-P)	MILLIHENRIES	5.1
ROTOR INERTIA	Jm [IN-LBS-SEC <sup>2</sup> ][Kg-M <sup>2</sup> ]	.00016[.000018]
STATIC FRICTION	Tf [IN-LBS][Nm]	.8[.09]

\*25°C AMBIENT WITH A MAXIMUM CASE TEMPERATURE OF 100°C ON MOTOR. MOTOR MOUNTED ON A 10" X 10" X 1/4" ALUMINUM HEATSINK. THERMOSTAT IN STATOR WINDINGS WILL OPEN IF WINDING TEMPERATURE EXCEEDS 155°C. THIS ALLOWS FOR AN APPROXIMATE +10% HEADROOM IN THE CONTINUOUS TORQUE RATING BEFORE THERMOSTAT OPENS.

**MECHANICAL NOTES:**

1. AXIAL LOAD: 15 LBS MAX
2. RADIAL LOAD: 20 LBS MAX @ 1" FROM FACE
3. MOTOR SEALED TO IP65.
4. MOTOR WEIGHT: 4.3 LBS. [ 2.0 kg]
5. MOTOR FINISH: BLACK EPOXY
6. MOTOR OUTPUT SHAFT: STAINLESS STEEL

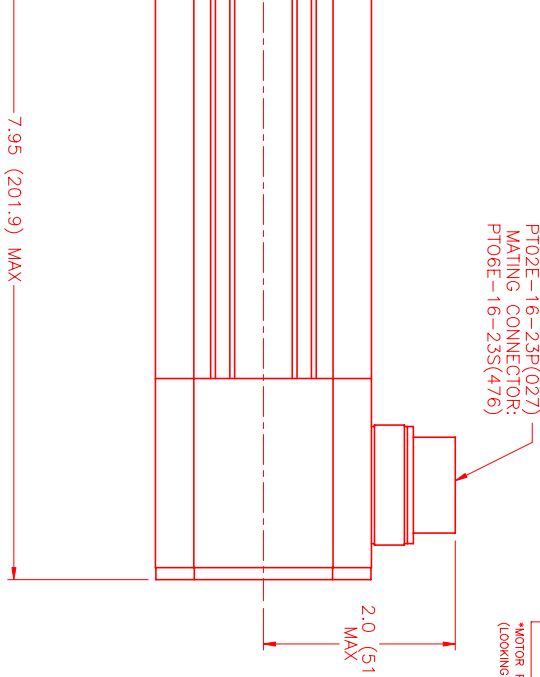
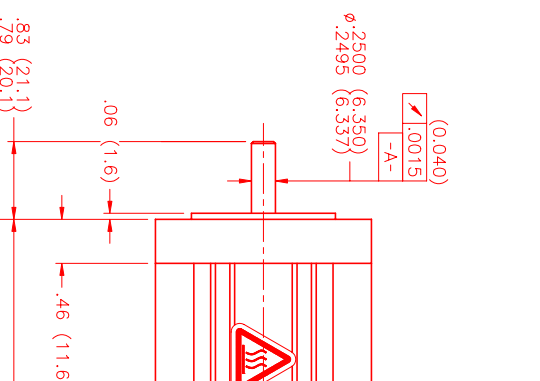
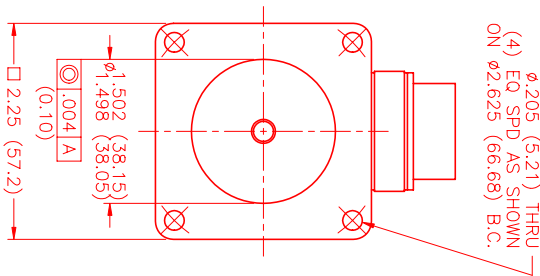
**ENCODER: (290-00065)**

OH35-1000P4-L6-5V  
 FAULTSAFE BRAKE:  
 MIN HOLDING TORQUE: 10 IN-LBS  
 INPUT VOLTAGE: 24 VOLTS

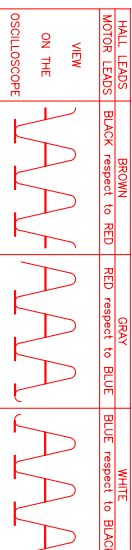
**CONNECTION CHART**  
 MOTOR/ENCODER/THERM/BRAKE CONNECTOR:  
 PTO2E-16-23P(027)  
 (270-00219)

MOTOR WIRE LEADS	ENC/THERM/BRK WIRE LEADS
PIN	PIN
WIRE FUNCTION	WIRE FUNCTION
WIRE COLOR	WIRE COLOR
A	T
B	E
C	F
D	G
	H
	I
	J
	K
	L
	M
	N
	S
	R
	P
	Z

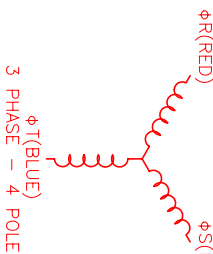
MOTOR WIRE LEADS	ENC/THERM/BRK WIRE LEADS
A	T
B	E
C	F
D	G
	H
	I
	J
	K
	L
	M
	N
	S
	R
	P
	Z



PTO2E-16-23P(027)  
 MATING CONNECTOR:  
 PTO6E-16-23S(476)



\*MOTOR ROTATION COUNTER CLOCKWISE (LOOKING AT THE FACE OF THE MOTOR)  
 WAVE REPRESENTING STATOR OUTPUT  
 WAVE REPRESENTING HALL SENSOR



NO.	PART NUMBER	DESCRIPTION	QTY.
1	PTO2E-16-23P(027)	MOTOR/ENCODER/THERM/BRAKE CONNECTOR	1

**MTS Automation Division**  
 MTS Systems Corporation  
 10000 W. 16th Ave., Suite 400  
 Denver, CO 80202  
 Phone: 303.440.9300  
 Fax: 303.440.9301  
 Email: sales@mts.com  
 Website: www.mts.com

DATE: 4/22/99  
 DRAWN: MVS  
 CHECKED: MVS  
 APPROVED: MVS

SCALE: 1/2=1