

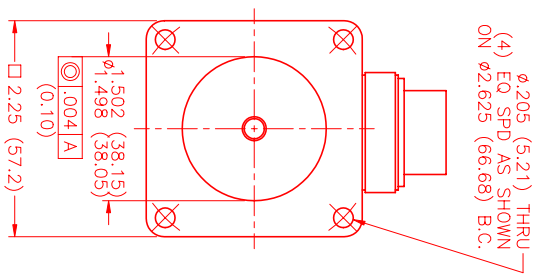
MOTOR DATA @ 230 VAC (TRAP)

MOTOR PARAMETER	UNITS	VALUE
HP RATED	HP	.27
KW RATED	KW	.20
N MAX	RPM	3300
N RATED	RPM	2800
* CONTINUOUS RATED TORQUE @ 2800 RPM	IN-LBS [Nm]	6.0 [.68]
* CONTINUOUS STALL TORQUE	IN-LBS [Nm]	7.5 [.85]
* CONTINUOUS LINE CURRENT	AMPS	2.3
	IN-LBS [Nm]	22.5 [2.54]
	AMPS	7.4
MAX. THEORETICAL ACCEL.	RAD/SEC ²	175,781
	KT IN-LBS/AMP [Nm/AMP]	32 [.36]
BACK EMF (LINE TO LINE)	Vrms/Krpm	28.3
	OHMS	14.4
INDUCTANCE (P-P)	MILLIHENRIES	17.9
R INERTIA	Jm [IN-LBS-SEC ²] [Kg-M ²]	0.000128 [0.0000145]
STATIC FRICTION	Tf [IN-LBS] [Nm]	.65 [.073]

*BASIC AMBIENT WITH A MAXIMUM CASE TEMPERATURE OF 100°C ON MOTOR. MOTOR MOUNTED ON A 10" X 10" X 10" X 1/4" ALUMINUM HEATSINK. THERMOSTAT IN STATOR WINDINGS WILL OPEN IF WINDING TEMPERATURE EXCEEDS 155°C. THIS ALLOWS FOR AN APPROXIMATE +10% HEADROOM IN THE CONTINUOUS TORQUE RATING BEFORE THERMOSTAT OPENS.

MECHANICAL NOTES:

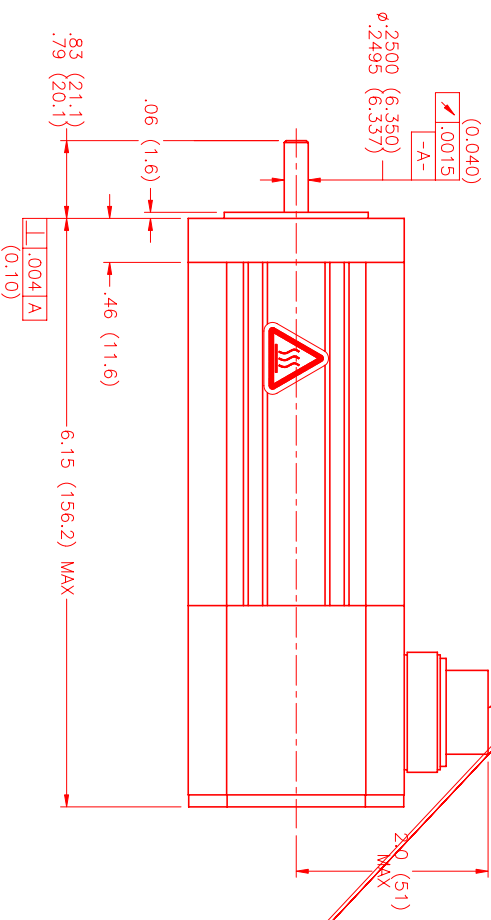
1. AXIAL LOAD: 15 LBS MAX
2. RADIAL LOAD: 20 LBS MAX @ 1" FROM FACE
3. MOTOR SEALED TO IP65.
4. MOTOR WEIGHT: 3.1 LBS. [1.4 Kg]
5. MOTOR FINISH: BLACK EPOXY
6. MOTOR OUTPUT SHAFT: STAINLESS STEEL
7. INCHES (MILLIMETERS)



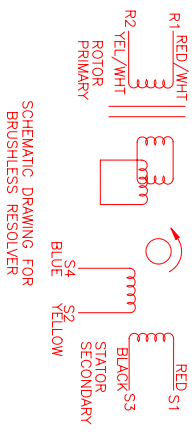
φ.205 (5.21) THRU EQ. SPD. AS SHOWN ON φ2.625 (66.68) B.C.

CONNECTION CHART

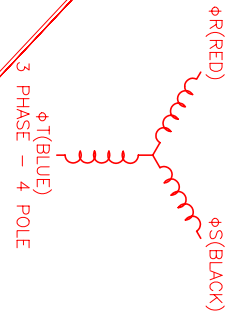
MTR/THERM/RES	WIRE FUNCTION	WIRE COLOR	WIRE LEADS
A	φR	RED	RED
B	φS	BLACK	BLACK
C	φT	BLUE	BLUE
D	PE GND	GRN/YEL	GRN/YEL
U	THERM	BLACK	BLACK
N	THERM	BLACK	BLACK
H	SIN	YELLOW	YELLOW
G	COS GND	BLACK	BLACK
S	COS	RED	RED
F	SIN GND	BLUE	BLUE
R	REF GND	YEL/WHI	YEL/WHI
E	REF	RED/WHI	RED/WHI
S	RES SHLD	GRN/YEL	GRN/YEL
K	-	-	-
L	-	-	-
M	-	-	-
P	-	-	-
T	-	-	-



PT02E-14-18P(027) MATING CONNECTOR
PT06E-14-18S(476)



SCHEMATIC DRAWING FOR BRUSHLESS RESOLVER



3 PHASE - 4 POLE

REV#	DESCRIPTION	DATE	APPD.	LIN
1	PRELIMINARY	4/12/00		

NO.	PART NUMBER	DESCRIPTION	QTY.
1	MPM663BTG6G1N	MOTOR	1

UNLESS OTHERWISE SPECIFIED	UNITS	SCALE
GENERAL DIMS	INCHES	1:1
DETAILED DIMS	INCHES	1:1
ANGLES	DEGREES	1:1

DATE	BY	CHKD.	APPD.
8/17/99	MVS		

TITLE	MATERIAL	QUANTITY
"B" / TRAP / 230V / ENG / RES / CONN	STAINLESS STEEL	1

DESIGNER	CHECKED	DATE
MVS		8/17/99

UNLESS OTHERWISE SPECIFIED	UNITS	SCALE
GENERAL DIMS	INCHES	1:1
DETAILED DIMS	INCHES	1:1
ANGLES	DEGREES	1:1

DATE	BY	CHKD.	APPD.
8/17/99	MVS		

TITLE	MATERIAL	QUANTITY
"B" / TRAP / 230V / ENG / RES / CONN	STAINLESS STEEL	1

DESIGNER	CHECKED	DATE
MVS		8/17/99

UNLESS OTHERWISE SPECIFIED	UNITS	SCALE
GENERAL DIMS	INCHES	1:1
DETAILED DIMS	INCHES	1:1
ANGLES	DEGREES	1:1

DATE	BY	CHKD.	APPD.
8/17/99	MVS		

TITLE	MATERIAL	QUANTITY
"B" / TRAP / 230V / ENG / RES / CONN	STAINLESS STEEL	1

DESIGNER	CHECKED	DATE
MVS		8/17/99

UNLESS OTHERWISE SPECIFIED	UNITS	SCALE
GENERAL DIMS	INCHES	1:1
DETAILED DIMS	INCHES	1:1
ANGLES	DEGREES	1:1

DATE	BY	CHKD.	APPD.
8/17/99	MVS		

TITLE	MATERIAL	QUANTITY
"B" / TRAP / 230V / ENG / RES / CONN	STAINLESS STEEL	1

DESIGNER	CHECKED	DATE
MVS		8/17/99

UNLESS OTHERWISE SPECIFIED	UNITS	SCALE
GENERAL DIMS	INCHES	1:1
DETAILED DIMS	INCHES	1:1
ANGLES	DEGREES	1:1

DATE	BY	CHKD.	APPD.
8/17/99	MVS		

TITLE	MATERIAL	QUANTITY
"B" / TRAP / 230V / ENG / RES / CONN	STAINLESS STEEL	1

DESIGNER	CHECKED	DATE
MVS		8/17/99

UNLESS OTHERWISE SPECIFIED	UNITS	SCALE
GENERAL DIMS	INCHES	1:1
DETAILED DIMS	INCHES	1:1
ANGLES	DEGREES	1:1

DATE	BY	CHKD.	APPD.
8/17/99	MVS		

TITLE	MATERIAL	QUANTITY
"B" / TRAP / 230V / ENG / RES / CONN	STAINLESS STEEL	1

DESIGNER	CHECKED	DATE
MVS		8/17/99

UNLESS OTHERWISE SPECIFIED	UNITS	SCALE
GENERAL DIMS	INCHES	1:1
DETAILED DIMS	INCHES	1:1
ANGLES	DEGREES	1:1

DATE	BY	CHKD.	APPD.
8/17/99	MVS		

TITLE	MATERIAL	QUANTITY
"B" / TRAP / 230V / ENG / RES / CONN	STAINLESS STEEL	1

DESIGNER	CHECKED	DATE
MVS		8/17/99

UNLESS OTHERWISE SPECIFIED	UNITS	SCALE
GENERAL DIMS	INCHES	1:1
DETAILED DIMS	INCHES	1:1
ANGLES	DEGREES	1:1

DATE	BY	CHKD.	APPD.
8/17/99	MVS		

TITLE	MATERIAL	QUANTITY
"B" / TRAP / 230V / ENG / RES / CONN	STAINLESS STEEL	1

DESIGNER	CHECKED	DATE
MVS		8/17/99

UNLESS OTHERWISE SPECIFIED	UNITS	SCALE
GENERAL DIMS	INCHES	1:1
DETAILED DIMS	INCHES	1:1
ANGLES	DEGREES	1:1

DATE	BY	CHKD.	APPD.
8/17/99	MVS		

TITLE	MATERIAL	QUANTITY
"B" / TRAP / 230V / ENG / RES / CONN	STAINLESS STEEL	1

DESIGNER	CHECKED	DATE
MVS		8/17/99

UNLESS OTHERWISE SPECIFIED	UNITS	SCALE
GENERAL DIMS	INCHES	1:1
DETAILED DIMS	INCHES	1:1
ANGLES	DEGREES	1:1

DATE	BY	CHKD.	APPD.
8/17/99	MVS		

TITLE	MATERIAL	QUANTITY
"B" / TRAP / 230V / ENG / RES / CONN	STAINLESS STEEL	1

DESIGNER	CHECKED	DATE
MVS		8/17/99

UNLESS OTHERWISE SPECIFIED	UNITS	SCALE
GENERAL DIMS	INCHES	1:1
DETAILED DIMS	INCHES	1:1
ANGLES	DEGREES	1:1

DATE	BY	CHKD.	APPD.
8/17/99	MVS		

TITLE	MATERIAL	QUANTITY
"B" / TRAP / 230V / ENG / RES / CONN	STAINLESS STEEL	1

DESIGNER	CHECKED	DATE
MVS		8/17/99

UNLESS OTHERWISE SPECIFIED	UNITS	SCALE
GENERAL DIMS	INCHES	1:1
DETAILED DIMS	INCHES	1:1
ANGLES	DEGREES	1:1

DATE	BY	CHKD.	APPD.
8/17/99	MVS		

TITLE	MATERIAL	QUANTITY
"B" / TRAP / 230V / ENG / RES / CONN	STAINLESS STEEL	1

DESIGNER	CHECKED	DATE
MVS		8/17/99

UNLESS OTHERWISE SPECIFIED	UNITS	SCALE
GENERAL DIMS	INCHES	1:1
DETAILED DIMS	INCHES	1:1
ANGLES	DEGREES	1:1

DATE	BY	CHKD.	APPD.
8/17/99	MVS		

TITLE	MATERIAL	QUANTITY
"B" / TRAP / 230V / ENG / RES / CONN	STAINLESS STEEL	1

DESIGNER	CHECKED	DATE
MVS		8/17/99

UNLESS OTHERWISE SPECIFIED	UNITS	SCALE
GENERAL DIMS	INCHES	1:1
DETAILED DIMS	INCHES	1:1
ANGLES	DEGREES	1:1

DATE	BY	CHKD.	APPD.
8/17/99	MVS		

TITLE	MATERIAL	QUANTITY
"B" / TRAP / 230V / ENG / RES / CONN	STAINLESS STEEL	1

DESIGNER	CHECKED	DATE
MVS		8/17/99

UNLESS OTHERWISE SPECIFIED	UNITS	SCALE
GENERAL DIMS	INCHES	1:1
DETAILED DIMS	INCHES	1:1
ANGLES	DEGREES	1:1

DATE	BY	CHKD.	APPD.
8/17/99	MVS		

TITLE	MATERIAL	QUANTITY
"B" / TRAP / 230V / ENG / RES / CONN	STAINLESS STEEL	1

DESIGNER	CHECKED	DATE
MVS		8/17/99

UNLESS OTHERWISE SPECIFIED	UNITS	SCALE
GENERAL DIMS	INCHES	1:1
DETAILED DIMS	INCHES	1:1
ANGLES	DEGREES	1:1

DATE	BY	CHKD.	APPD.
8/17/99	MVS		

TITLE	MATERIAL	QUANTITY
"B" / TRAP / 230V / ENG / RES / CONN	STAINLESS STEEL	1

DESIGNER	CHECKED	DATE
MVS		8/17/99

UNLESS OTHERWISE SPECIFIED	UNITS	SCALE
GENERAL DIMS	INCHES	1:1
DETAILED DIMS	INCHES	1:1
ANGLES	DEGREES	1:1

DATE	BY	CHKD.	APPD.
8/17/99	MVS		

TITLE	MATERIAL	QUANTITY
"B" / TRAP / 230V / ENG / RES / CONN	STAINLESS STEEL	1