

MOTOR DATA @ 230 VAC (SINE)

| MOTOR PARAMETERS | UNITS | VALUE |
|--------------------------------------|--|--------------------|
| HORSEPOWER | HP | .22 |
| KILOWATTS | KW | .16 |
| MAX. OPERATING SPEED | N MAX | 5000 |
| SPEED @ RATED TORQUE | N RATED | 4000 |
| * CONTINUOUS RATED TORQUE @ 4000 RPM | IN-LBS[Nm] | 3.4 [.38] |
| * CONTINUOUS STALL TORQUE | IN-LBS[Nm] | 5.0 [.56] |
| CONTINUOUS LINE CURRENT | AMPS/(RMS/φ) | 1.1 |
| PEAK TORQUE | IN-LBS[Nm] | 15.1 [1.7] |
| PEAK CURRENT | AMPS/(RMS/φ) | 3.3 |
| MAX. THEORETICAL ACCEL. | RAD/SEC ² | 155,670 |
| TORQUE SENSITIVITY | Kt [IN-LBS/AMP/(RMS/φ)] | 4.5 [.51] |
| BACK EMF (LINE TO LINE) | Vrms/krpm | 28.3 |
| D.C. RESISTANCE (P-P) | OHMS | 18.5 |
| INDUCTANCE (P-P) | MILLIHENRIES | 26.4 |
| ROTOR INERTIA | Jm [IN-LBS-SEC ²] [Kg-M ²] | .000097 [.0000109] |
| STATIC FRICTION | Tf [IN-LBS[Nm]] | .5 [.06] |

*25°C AMBIENT WITH A MAXIMUM CASE TEMPERATURE OF 100°C ON MOTOR. MOTOR MOUNTED ON A 10" X 10" X 1 1/4" ALUMINUM HEATSINK. THERMOSTAT IN STATOR WINDINGS WILL OPEN IF WINDING TEMPERATURE EXCEEDS 155°C. THIS ALLOWS FOR AN APPROXIMATE +10% HEADROOM IN THE CONTINUOUS TORQUE RATING BEFORE THERMOSTAT OPENS.

MECHANICAL NOTES:

- AXIAL LOAD: 15 LBS MAX
- RADIAL LOAD: 20 LBS MAX @ 1" FROM FACE
- MOTOR SEALED TO IP65.
- MOTOR WEIGHT: 2.7 LBS. [1.2 Kg]
- MOTOR FINISH: BLACK EPOXY
- MOTOR OUTPUT SHAFT: STAINLESS STEEL
- MILLIMETERS (INCHES)

ENCODER: (290-00102)

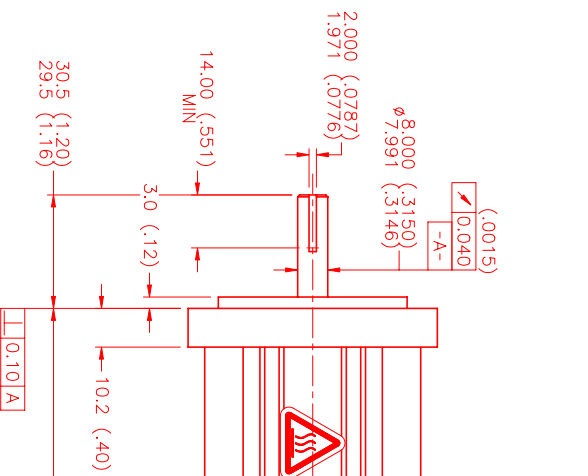
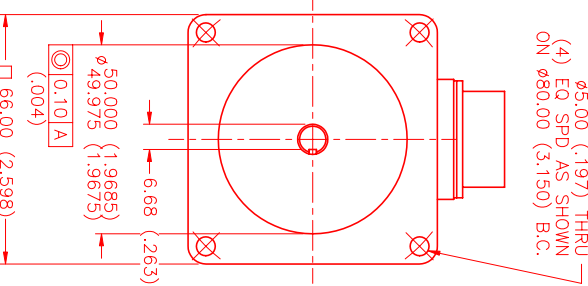
OIH35-3000P4-L6-5V

CONNECTION CHART

MOTOR/ENCODER/THERM CONNECTOR:
PT02E-16-23P(027)
(270-00219)

| MOTOR WIRE LEADS | WIRE COLOR | WIRE COLOR |
|------------------|------------|------------|
| A | φR | RED |
| B | φS | BLACK |
| C | φT | BLUE |
| D | PE GND | GRN/YEL |

| ENC/THERM WIRE LEADS | WIRE FUNCTION | WIRE COLOR |
|----------------------|---------------|------------|
| PIN | FUNCTION | COLOR |
| T | GROUND | BLACK |
| E | +5VDC | RED |
| F | CH A | BLUE |
| U | CH A \ | BLUE/BLK |
| G | CH B | GREEN |
| V | CH B \ | GRN/BLK |
| H | CH Z | YELLOW |
| W | CH Z \ | YEL/BLK |
| J | CH U | BROWN |
| K | CH U \ | BRN/BLK |
| X | CH V | GRAY |
| L | CH V \ | GRAY/BLK |
| Y | CH W | WHITE |
| M | CH W \ | WHT/BLK |
| N | GND/CABLE | SHLD |
| S | THERM | BLACK |
| R | THERM | BLACK |
| P | - | - |
| Z | - | - |

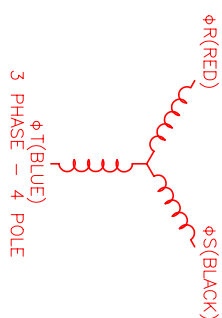


PT02E-16-23P(027)
MATING CONNECTOR:
PT06E-16-23S(476)



| VIEW | HALL LEADS | WHITE |
|--------------|----------------------|-----------------------|
| ON THE | BLACK respect to RED | BLUE respect to BLACK |
| OSCILLOSCOPE | BROWN | GRAY |

*MOTOR ROTATION CCW (COUNTER CLOCKWISE)
(LOOKING AT THE FACE OF THE MOTOR)



| NO. | PART NUMBER | DESCRIPTION | QTY. |
|-----|-------------|--|------|
| 1 | MPS | MPS Systems Corporation Automation Division | |

| REV. | DESCRIPTION | DATE | APP. |
|-------------|-------------|---------|------|
| PRELIMINARY | | 5/31/01 | AJS |

| NO. | PART NUMBER | DESCRIPTION | QTY. |
|-----|-------------|--|------|
| 1 | MPS | MPS Systems Corporation Automation Division | |

| REV. | DESCRIPTION | DATE | APP. |
|-------------|-------------|---------|------|
| PRELIMINARY | | 5/31/01 | AJS |

| NO. | PART NUMBER | DESCRIPTION | QTY. |
|-----|-------------|--|------|
| 1 | MPS | MPS Systems Corporation Automation Division | |

| REV. | DESCRIPTION | DATE | APP. |
|-------------|-------------|---------|------|
| PRELIMINARY | | 5/31/01 | AJS |

| NO. | PART NUMBER | DESCRIPTION | QTY. |
|-----|-------------|--|------|
| 1 | MPS | MPS Systems Corporation Automation Division | |

| REV. | DESCRIPTION | DATE | APP. |
|-------------|-------------|---------|------|
| PRELIMINARY | | 5/31/01 | AJS |

| NO. | PART NUMBER | DESCRIPTION | QTY. |
|-----|-------------|--|------|
| 1 | MPS | MPS Systems Corporation Automation Division | |

| REV. | DESCRIPTION | DATE | APP. |
|-------------|-------------|---------|------|
| PRELIMINARY | | 5/31/01 | AJS |

| NO. | PART NUMBER | DESCRIPTION | QTY. |
|-----|-------------|--|------|
| 1 | MPS | MPS Systems Corporation Automation Division | |

| REV. | DESCRIPTION | DATE | APP. |
|-------------|-------------|---------|------|
| PRELIMINARY | | 5/31/01 | AJS |

| NO. | PART NUMBER | DESCRIPTION | QTY. |
|-----|-------------|--|------|
| 1 | MPS | MPS Systems Corporation Automation Division | |

| REV. | DESCRIPTION | DATE | APP. |
|-------------|-------------|---------|------|
| PRELIMINARY | | 5/31/01 | AJS |

| NO. | PART NUMBER | DESCRIPTION | QTY. |
|-----|-------------|--|------|
| 1 | MPS | MPS Systems Corporation Automation Division | |

| REV. | DESCRIPTION | DATE | APP. |
|-------------|-------------|---------|------|
| PRELIMINARY | | 5/31/01 | AJS |

| NO. | PART NUMBER | DESCRIPTION | QTY. |
|-----|-------------|--|------|
| 1 | MPS | MPS Systems Corporation Automation Division | |

| REV. | DESCRIPTION | DATE | APP. |
|-------------|-------------|---------|------|
| PRELIMINARY | | 5/31/01 | AJS |

| NO. | PART NUMBER | DESCRIPTION | QTY. |
|-----|-------------|--|------|
| 1 | MPS | MPS Systems Corporation Automation Division | |

| REV. | DESCRIPTION | DATE | APP. |
|-------------|-------------|---------|------|
| PRELIMINARY | | 5/31/01 | AJS |

| NO. | PART NUMBER | DESCRIPTION | QTY. |
|-----|-------------|--|------|
| 1 | MPS | MPS Systems Corporation Automation Division | |

| REV. | DESCRIPTION | DATE | APP. |
|-------------|-------------|---------|------|
| PRELIMINARY | | 5/31/01 | AJS |

| NO. | PART NUMBER | DESCRIPTION | QTY. |
|-----|-------------|--|------|
| 1 | MPS | MPS Systems Corporation Automation Division | |

| REV. | DESCRIPTION | DATE | APP. |
|-------------|-------------|---------|------|
| PRELIMINARY | | 5/31/01 | AJS |

| NO. | PART NUMBER | DESCRIPTION | QTY. |
|-----|-------------|--|------|
| 1 | MPS | MPS Systems Corporation Automation Division | |

| REV. | DESCRIPTION | DATE | APP. |
|-------------|-------------|---------|------|
| PRELIMINARY | | 5/31/01 | AJS |

| NO. | PART NUMBER | DESCRIPTION | QTY. |
|-----|-------------|--|------|
| 1 | MPS | MPS Systems Corporation Automation Division | |

| REV. | DESCRIPTION | DATE | APP. |
|-------------|-------------|---------|------|
| PRELIMINARY | | 5/31/01 | AJS |

| NO. | PART NUMBER | DESCRIPTION | QTY. |
|-----|-------------|--|------|
| 1 | MPS | MPS Systems Corporation Automation Division | |

| REV. | DESCRIPTION | DATE | APP. |
|-------------|-------------|---------|------|
| PRELIMINARY | | 5/31/01 | AJS |

| NO. | PART NUMBER | DESCRIPTION | QTY. |
|-----|-------------|--|------|
| 1 | MPS | MPS Systems Corporation Automation Division | |

| REV. | DESCRIPTION | DATE | APP. |
|-------------|-------------|---------|------|
| PRELIMINARY | | 5/31/01 | AJS |

| NO. | PART NUMBER | DESCRIPTION | QTY. |
|-----|-------------|--|------|
| 1 | MPS | MPS Systems Corporation Automation Division | |

| REV. | DESCRIPTION | DATE | APP. |
|-------------|-------------|---------|------|
| PRELIMINARY | | 5/31/01 | AJS |

| NO. | PART NUMBER | DESCRIPTION | QTY. |
|-----|-------------|--|------|
| 1 | MPS | MPS Systems Corporation Automation Division | |

| REV. | DESCRIPTION | DATE | APP. |
|-------------|-------------|---------|------|
| PRELIMINARY | | 5/31/01 | AJS |

| NO. | PART NUMBER | DESCRIPTION | QTY. |
|-----|-------------|--|------|
| 1 | MPS | MPS Systems Corporation Automation Division | |

| REV. | DESCRIPTION | DATE | APP. |
|-------------|-------------|---------|------|
| PRELIMINARY | | 5/31/01 | AJS |

| NO. | PART NUMBER | DESCRIPTION | QTY. |
|-----|-------------|--|------|
| 1 | MPS | MPS Systems Corporation Automation Division | |

| REV. | DESCRIPTION | DATE | APP. |
|-------------|-------------|---------|------|
| PRELIMINARY | | 5/31/01 | AJS |

| NO. | PART NUMBER | DESCRIPTION | QTY. |
|-----|-------------|--|------|
| 1 | MPS | MPS Systems Corporation Automation Division | |

| REV. | DESCRIPTION | DATE | APP. |
|-------------|-------------|---------|------|
| PRELIMINARY | | 5/31/01 | AJS |

| NO. | PART NUMBER | DESCRIPTION | QTY. |
|-----|-------------|--|------|
| 1 | MPS | MPS Systems Corporation Automation Division | |

| REV. | DESCRIPTION | DATE | APP. |
|-------------|-------------|---------|------|
| PRELIMINARY | | 5/31/01 | AJS |

| NO. | PART NUMBER | DESCRIPTION | QTY. |
|-----|-------------|--|------|
| 1 | MPS | MPS Systems Corporation Automation Division | |

| REV. | DESCRIPTION | DATE | APP. |
|-------------|-------------|---------|------|
| PRELIMINARY | | 5/31/01 | AJS |

| NO. | PART NUMBER | DESCRIPTION | QTY. |
|-----|-------------|--|------|
| 1 | MPS | MPS Systems Corporation Automation Division | |

| REV. | DESCRIPTION | DATE | APP. |
|-------------|-------------|---------|------|
| PRELIMINARY | | 5/31/01 | AJS |

| NO. | PART NUMBER | DESCRIPTION | QTY. |
|-----|-------------|--|------|
| 1 | MPS | MPS Systems Corporation Automation Division | |

| REV. | DESCRIPTION | DATE | APP. |
|-------------|-------------|---------|------|
| PRELIMINARY | | 5/31/01 | AJS |

| NO. | PART NUMBER | DESCRIPTION | QTY. |
|-----|-------------|--|------|
| 1 | MPS | MPS Systems Corporation Automation Division | |

| REV. | DESCRIPTION | DATE | APP. |
|-------------|-------------|---------|------|
| PRELIMINARY | | 5/31/01 | AJS |

| NO. | PART NUMBER | DESCRIPTION | QTY. |
|-----|-------------|--|------|
| 1 | MPS | MPS Systems Corporation Automation Division | |

| REV. | DESCRIPTION | DATE | APP. |
|-------------|-------------|---------|------|
| PRELIMINARY | | 5/31/01 | AJS |

| NO. | PART NUMBER | DESCRIPTION | QTY. |
|-----|-------------|--|------|
| 1 | MPS | MPS Systems Corporation Automation Division | |

| REV. | DESCRIPTION | DATE | APP. |
|-------------|-------------|---------|------|
| PRELIMINARY | | 5/31/01 | AJS |

| NO. | PART NUMBER | DESCRIPTION | QTY. |
|-----|-------------|--|------|
| 1 | MPS | MPS Systems Corporation Automation Division | |

| REV. | DESCRIPTION | DATE | APP. |
|-------------|-------------|---------|------|
| PRELIMINARY | | 5/31/01 | AJS |

| NO. | PART NUMBER | DESCRIPTION | QTY. |
|-----|-------------|--|------|
| 1 | MPS | MPS Systems Corporation Automation Division | |

| REV. | DESCRIPTION | DATE | APP. |
|-------------|-------------|---------|------|
| PRELIMINARY | | 5/31/01 | AJS |

| NO. | PART NUMBER | DESCRIPTION | QTY. |
|-----|-------------|--|------|
| 1 | MPS | MPS Systems Corporation Automation Division | |

| REV. | DESCRIPTION | DATE | APP. |
|-------------|-------------|---------|------|
| PRELIMINARY | | 5/31/01 | AJS |

| NO. | PART NUMBER | DESCRIPTION | QTY. |
|-----|-------------|--|------|
| 1 | MPS | MPS Systems Corporation Automation Division | |

| REV. | DESCRIPTION | DATE | APP. |
|-------------|-------------|---------|------|
| PRELIMINARY | | 5/31/01 | AJS |

| NO. | PART NUMBER | DESCRIPTION | QTY. |
|-----|-------------|--|------|
| 1 | MPS | MPS Systems Corporation Automation Division | |

| REV. | DESCRIPTION | DATE | APP. |
|-------------|-------------|---------|------|
| PRELIMINARY | | 5/31/01 | AJS |

| NO. | PART NUMBER | DESCRIPTION | QTY. |
|-----|-------------|--|------|
| 1 | MPS | MPS Systems Corporation Automation Division | |

| REV. | DESCRIPTION | DATE | APP. |
|-------------|-------------|---------|------|
| PRELIMINARY | | 5/31/01 | AJS |

| NO. | PART NUMBER | DESCRIPTION | QTY. |
|-----|-------------|--|------|
| 1 | MPS | MPS Systems Corporation Automation Division | |

| REV. | DESCRIPTION | DATE | APP. |
|-------------|-------------|---------|------|
| PRELIMINARY | | 5/31/01 | AJS |

| NO. | PART NUMBER | DESCRIPTION | QTY. |
|-----|-------------|--|------|
| 1 | MPS | MPS Systems Corporation Automation Division | |

| REV. | DESCRIPTION | DATE | APP. |
|------|-------------|------|------|
|------|-------------|------|------|