

### MOTOR DATA @ 85 VDC (TRAP)

MOTOR PARAMETERS	UNITS	VALUE
HORSEPOWER	HP	.087
KILOWATTS	KW	.065
MAX. OPERATING SPEED	N MAX	2450
SPEED @ RATED TORQUE	RPM	1300
* CONTINUOUS RATED TORQUE @ 1300 RPM	IN-LBS [Nm]	4.21 [4.7]
* CONTINUOUS STALL TORQUE	IN-LBS [Nm]	5.01 [5.6]
CONTINUOUS LINE CURRENT	AMPS	2.5
PEAK TORQUE	IN-LBS [Nm]	15.11 [1.7]
PEAK CURRENT	AMPS	7.6
MAX. THEORETICAL ACCEL.	RAD/SEC <sup>2</sup>	155,670
TORQUE SENSITIVITY	Kt [IN-LBS/AMP] [Nm/AMP]	2.01 [23]
BACK EMF (LINE TO LINE)	Vrms/Krpm	17.8
D.C. RESISTANCE (P-P)	OHMS	8.4
INDUCCANCE (P-P)	MILLIHENRIES	11.6
ROTOR INERTIA	Jm [IN-LBS-SEC <sup>2</sup> ] [Kg-M <sup>2</sup> ]	.000097 [0.0000109]
STATIC FRICTION	Tf [IN-LBS] [Nm]	.5 [0.6]

\*25°C AMBIENT WITH A MAXIMUM CASE TEMPERATURE OF 100°C ON MOTOR. MOTOR MOUNTED ON A 10" X 10" X 10" X 1 1/4" ALUMINUM HEATSINK. THERMOSTAT IN STATOR WINDINGS WILL OPEN IF WINDING TEMPERATURE EXCEEDS 155°C. THIS ALLOWS FOR AN APPROXIMATE +10% HEADROOM IN THE CONTINUOUS TORQUE RATING BEFORE THERMOSTAT OPENS.

#### MECHANICAL NOTES:

- AXIAL LOAD: 15 LBS MAX
- RADIAL LOAD: 20 LBS MAX @ 1" FROM FACE
- MOTOR SEALED TO IP65.
- MOTOR WEIGHT: 2.6 LBS. [ 1.2 Kg]
- MOTOR FINISH: BLACK EPOXY
- MOTOR OUTPUT SHAFT: STAINLESS STEEL
- INCHES (MILLIMETERS)

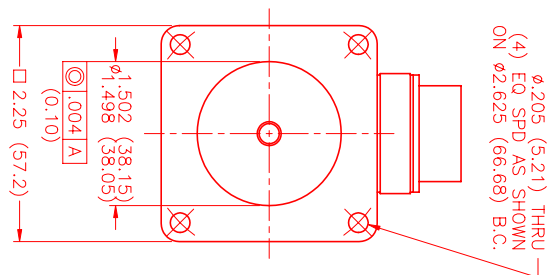
ENCODER: (290-00056)  
OH35-2000P4-L6-SV

### CONNECTION CHART

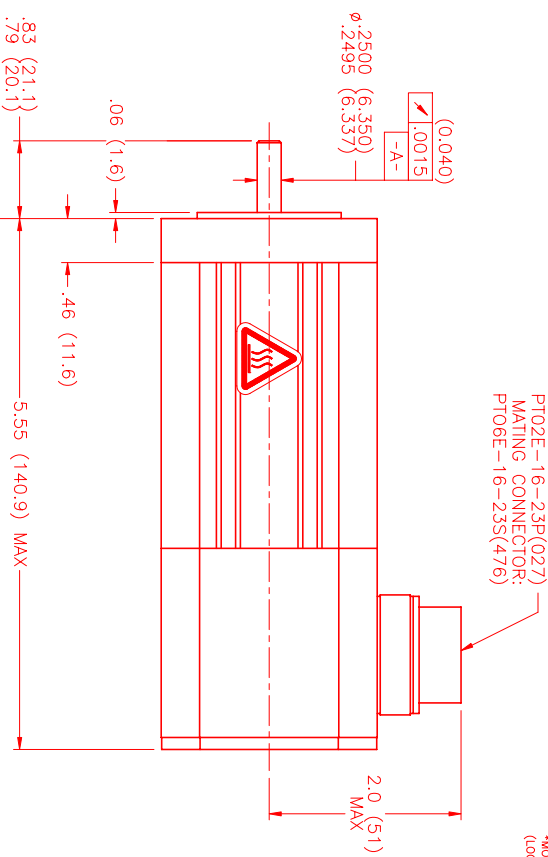
MOTOR/ENCODER/THERM CONNECTOR:  
PT02E-16-23P(027)  
(270-00219)

MOTOR WIRE LEADS	WIRE COLOR
A	φR RED
B	φS BLACK
C	φT BLUE
D	PE GND GRN/YEL

ENC/THERM WIRE LEADS	WIRE FUNCTION	WIRE COLOR
PIN T	GROUND	BLACK
E	+5VDC	RED
F	CH A	BLUE
U	CH A \	BLUE/BLK
G	CH B	GREEN
V	CH B \	GRN/BLK
H	CH Z	YELLOW
W	CH Z \	YEL/BLK
J	CH U	BROWN
K	CH U \	BRN/BLK
X	CH V	GRAY
L	CH V \	GRAY/BLK
Y	CH W	WHITE
M	CH W \	WHT/BLK
N	GND/CABLE	SHLD
S	THERM	BLACK
R	THERM	BLACK
P	-	-
Z	-	-



(4) φ.205 (5.21) THRU EQ SPD AS SHOWN ON φ2.625 (66.68) B.C.



PT02E-16-23P(027) MATING CONNECTOR: PT02E-16-23S(476)

HALL LEADS	BROWN	GRAY	WHITE
MOTOR LEADS	BLACK respect to RED	RED respect to BLUE	BLUE respect to BLACK

\*MOTOR ROTATION CW (COUNTER CLOCKWISE) (LOOKING AT THE FACE OF THE MOTOR)



NO.	PART NUMBER	DESCRIPTION	QTY.
1	MPM662ATM6JN1N	MOTOR	1

REV.	DESCRIPTION	DATE	APP.
PRELIMINARY		12/19/00	MVS

NO.	PART NUMBER	DESCRIPTION	QTY.
1	MPM662ATM6JN1N	MOTOR	1

REV.	DESCRIPTION	DATE	APP.
PRELIMINARY		12/19/00	MVS

NO.	PART NUMBER	DESCRIPTION	QTY.
1	MPM662ATM6JN1N	MOTOR	1

REV.	DESCRIPTION	DATE	APP.
PRELIMINARY		12/19/00	MVS

NO.	PART NUMBER	DESCRIPTION	QTY.
1	MPM662ATM6JN1N	MOTOR	1

REV.	DESCRIPTION	DATE	APP.
PRELIMINARY		12/19/00	MVS

NO.	PART NUMBER	DESCRIPTION	QTY.
1	MPM662ATM6JN1N	MOTOR	1

REV.	DESCRIPTION	DATE	APP.
PRELIMINARY		12/19/00	MVS

NO.	PART NUMBER	DESCRIPTION	QTY.
1	MPM662ATM6JN1N	MOTOR	1

REV.	DESCRIPTION	DATE	APP.
PRELIMINARY		12/19/00	MVS

NO.	PART NUMBER	DESCRIPTION	QTY.
1	MPM662ATM6JN1N	MOTOR	1

REV.	DESCRIPTION	DATE	APP.
PRELIMINARY		12/19/00	MVS

NO.	PART NUMBER	DESCRIPTION	QTY.
1	MPM662ATM6JN1N	MOTOR	1

REV.	DESCRIPTION	DATE	APP.
PRELIMINARY		12/19/00	MVS

NO.	PART NUMBER	DESCRIPTION	QTY.
1	MPM662ATM6JN1N	MOTOR	1

REV.	DESCRIPTION	DATE	APP.
PRELIMINARY		12/19/00	MVS

NO.	PART NUMBER	DESCRIPTION	QTY.
1	MPM662ATM6JN1N	MOTOR	1

REV.	DESCRIPTION	DATE	APP.
PRELIMINARY		12/19/00	MVS

NO.	PART NUMBER	DESCRIPTION	QTY.
1	MPM662ATM6JN1N	MOTOR	1

REV.	DESCRIPTION	DATE	APP.
PRELIMINARY		12/19/00	MVS

NO.	PART NUMBER	DESCRIPTION	QTY.
1	MPM662ATM6JN1N	MOTOR	1

REV.	DESCRIPTION	DATE	APP.
PRELIMINARY		12/19/00	MVS

NO.	PART NUMBER	DESCRIPTION	QTY.
1	MPM662ATM6JN1N	MOTOR	1

REV.	DESCRIPTION	DATE	APP.
PRELIMINARY		12/19/00	MVS

NO.	PART NUMBER	DESCRIPTION	QTY.
1	MPM662ATM6JN1N	MOTOR	1

REV.	DESCRIPTION	DATE	APP.
PRELIMINARY		12/19/00	MVS

NO.	PART NUMBER	DESCRIPTION	QTY.
1	MPM662ATM6JN1N	MOTOR	1

REV.	DESCRIPTION	DATE	APP.
PRELIMINARY		12/19/00	MVS

NO.	PART NUMBER	DESCRIPTION	QTY.
1	MPM662ATM6JN1N	MOTOR	1

REV.	DESCRIPTION	DATE	APP.
PRELIMINARY		12/19/00	MVS

NO.	PART NUMBER	DESCRIPTION	QTY.
1	MPM662ATM6JN1N	MOTOR	1

REV.	DESCRIPTION	DATE	APP.
PRELIMINARY		12/19/00	MVS

NO.	PART NUMBER	DESCRIPTION	QTY.
1	MPM662ATM6JN1N	MOTOR	1

REV.	DESCRIPTION	DATE	APP.
PRELIMINARY		12/19/00	MVS

NO.	PART NUMBER	DESCRIPTION	QTY.
1	MPM662ATM6JN1N	MOTOR	1

REV.	DESCRIPTION	DATE	APP.
PRELIMINARY		12/19/00	MVS

NO.	PART NUMBER	DESCRIPTION	QTY.
1	MPM662ATM6JN1N	MOTOR	1

REV.	DESCRIPTION	DATE	APP.
PRELIMINARY		12/19/00	MVS

NO.	PART NUMBER	DESCRIPTION	QTY.
1	MPM662ATM6JN1N	MOTOR	1

REV.	DESCRIPTION	DATE	APP.
PRELIMINARY		12/19/00	MVS

NO.	PART NUMBER	DESCRIPTION	QTY.
1	MPM662ATM6JN1N	MOTOR	1

REV.	DESCRIPTION	DATE	APP.
PRELIMINARY		12/19/00	MVS

NO.	PART NUMBER	DESCRIPTION	QTY.
1	MPM662ATM6JN1N	MOTOR	1

REV.	DESCRIPTION	DATE	APP.
PRELIMINARY		12/19/00	MVS

NO.	PART NUMBER	DESCRIPTION	QTY.
1	MPM662ATM6JN1N	MOTOR	1

REV.	DESCRIPTION	DATE	APP.
PRELIMINARY		12/19/00	MVS

NO.	PART NUMBER	DESCRIPTION	QTY.
1	MPM662ATM6JN1N	MOTOR	1

REV.	DESCRIPTION	DATE	APP.
PRELIMINARY		12/19/00	MVS

NO.	PART NUMBER	DESCRIPTION	QTY.
1	MPM662ATM6JN1N	MOTOR	1

REV.	DESCRIPTION	DATE	APP.
PRELIMINARY		12/19/00	MVS

NO.	PART NUMBER	DESCRIPTION	QTY.
1	MPM662ATM6JN1N	MOTOR	1

REV.	DESCRIPTION	DATE	APP.
PRELIMINARY		12/19/00	MVS

NO.	PART NUMBER	DESCRIPTION	QTY.
1	MPM662ATM6JN1N	MOTOR	1

REV.	DESCRIPTION	DATE	APP.
PRELIMINARY		12/19/00	MVS

NO.	PART NUMBER	DESCRIPTION	QTY.
1	MPM662ATM6JN1N	MOTOR	1

REV.	DESCRIPTION	DATE	APP.
PRELIMINARY		12/19/00	MVS

NO.	PART NUMBER	DESCRIPTION	QTY.
1	MPM662ATM6JN1N	MOTOR	1

REV.	DESCRIPTION	DATE	APP.
PRELIMINARY		12/19/00	MVS

NO.	PART NUMBER	DESCRIPTION	QTY.
1	MPM662ATM6JN1N	MOTOR	1

REV.	DESCRIPTION	DATE	APP.
PRELIMINARY		12/19/00	MVS

NO.	PART NUMBER	DESCRIPTION	QTY.
1	MPM662ATM6JN1N	MOTOR	1

REV.	DESCRIPTION	DATE	APP.
PRELIMINARY		12/19/00	MVS

NO.	PART NUMBER	DESCRIPTION	QTY.
1	MPM662ATM6JN1N	MOTOR	1

REV.	DESCRIPTION	DATE	APP.
PRELIMINARY		12/19/00	MVS

NO.	PART NUMBER	DESCRIPTION	QTY.
1	MPM662ATM6JN1N	MOTOR	1

REV.	DESCRIPTION	DATE	APP.
PRELIMINARY		12/19/00	MVS

NO.	PART NUMBER	DESCRIPTION	QTY.
1	MPM662ATM6JN1N	MOTOR	1

REV.	DESCRIPTION	DATE	APP.
PRELIMINARY		12/19/00	MVS

NO.	PART NUMBER	DESCRIPTION	QTY.
1	MPM662ATM6JN1N	MOTOR	1