

MOTOR DATA @ 110 VAC (TRAP)

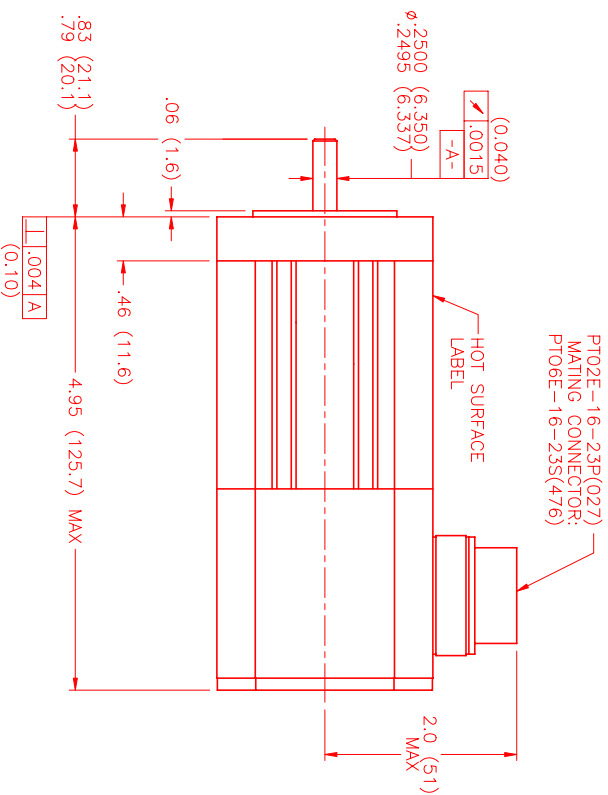
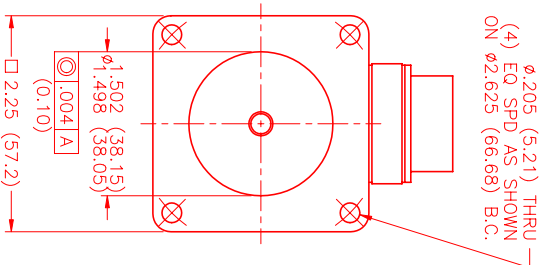
MOTOR PARAMETERS	UNITS	VALUE
HORSEPOWER	HP RATED	.15
KILOWATTS	KW RATED	.11
MAX. OPERATING SPEED	N. MAX RPM	6000
SPEED @ RATED TORQUE	RATED RPM	4000
* CONTINUOUS RATED TORQUE @ 4000 RPM	IN-LBS[Nm]	2.3[.26]
* CONTINUOUS STALL TORQUE	IN-LBS[Nm]	2.6[.29]
CONTINUOUS LINE CURRENT	AMPS	3.0
PEAK TORQUE	IN-LBS[Nm]	7.9[0.9]
PEAK CURRENT	AMPS	9.7
MAX. THEORETICAL ACCEL.	RAD/SEC ²	118,182
TORQUE SENSITIVITY	Kt [IN-LBS/AMP][Nm/AMP]	1.03[.12]
BACK EMF (LINE TO LINE)	Vrms/Krpm	9.2
D.C. RESISTANCE (P-P)	OHMS	6.9
INDUCTANCE (P-P)	MILLIHENRIES	7.7
ROTOR INERTIA	Jm [IN-LBS-SEC ²][Kg-M ²]	.000066[.0000075]
STATIC FRICTION	Tf [IN-LBS][Nm]	.35[.040]

*25°C AMBIENT WITH A MAXIMUM CASE TEMPERATURE OF 100°C ON MOTOR. MOTOR MOUNTED ON A 10" X 10" X 1/4" ALUMINUM HEATSINK. THERMOSTAT IN STATOR WINDINGS WILL OPEN IF WINDING TEMPERATURE EXCEEDS 155°C. THIS ALLOWS FOR AN APPROXIMATE +10% HEADROOM IN THE CONTINUOUS TORQUE RATING BEFORE THERMOSTAT OPENS.

MECHANICAL NOTES:

- AXIAL LOAD: 15 LBS MAX
- RADIAL LOAD: 20 LBS MAX @ 1" FROM FACE
- MOTOR SEALED TO IP65.
- MOTOR WEIGHT: 2.1 LBS. [1.0 kg]
- MOTOR FINISH: BLACK EPOXY
- MOTOR OUTPUT SHAFT: STAINLESS STEEL
- INCHES (MILLIMETERS)

ENCODER: (290-00056) OH35-2000P4-L6-5V



CONNECTION CHART MOTOR/ENCODER/THERM CONNECTOR: PT02E-16-23P(027) (270-00219)

MOTOR WIRE LEADS	WIRE COLOR
A	RED
B	BLACK
C	BLUE
D	GRN/YEL

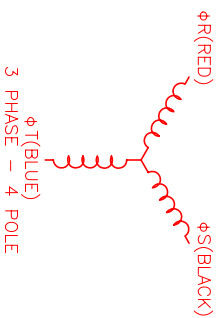
ENC/THERM WIRE LEADS	WIRE FUNCTION	WIRE COLOR
T	GROUND	BLACK
E	+5VDC	RED
F	CH A	BLUE
U	CH A	BLUE/BLK
G	CH B	GREEN
V	CH B	GRN/BLK
H	CH Z	YELLOW
W	CH Z	YEL/BLK
J	CH U	BROWN
K	CH U	BRN/BLK
X	CH V	GRAY
L	CH V	GRAY/BLK
Y	CH W	WHITE
M	CH W	WHT/BLK
N	GND/CABLE	SHLD
S	THERM	BLACK
R	THERM	BLACK
P	-	-
Z	-	-

MOTOR & HALL POSITION CHART

HALL LEADS	BROWN	GRAY	WHITE
MOTOR LEADS	BLACK respect to RED	RED respect to BLUE	BLUE respect to BLACK
VIEW ON THE OSCILLOSCOPE	AAAF	AAA	AAA

MOTOR ROTATION CCW (COUNTER CLOCKWISE)
(LOOKING AT THE FACE OF THE MOTOR)

WAVE REPRESENTING STATOR OUTPUT
(LOOKING AT THE FACE OF THE MOTOR)



NO.	PART NUMBER	DESCRIPTION	QTY
1	290-00056	ENCODER	1
2	OH35-2000P4-L6-5V	ENCODER	1
3	PT02E-16-23P(027)	MOTOR/ENCODER/THERM CONNECTOR	1
4	270-00219	MOTOR/ENCODER/THERM CONNECTOR	1

NO.	PART NUMBER	DESCRIPTION	QTY
1	290-00056	ENCODER	1
2	OH35-2000P4-L6-5V	ENCODER	1
3	PT02E-16-23P(027)	MOTOR/ENCODER/THERM CONNECTOR	1
4	270-00219	MOTOR/ENCODER/THERM CONNECTOR	1

NO.	PART NUMBER	DESCRIPTION	QTY
1	290-00056	ENCODER	1
2	OH35-2000P4-L6-5V	ENCODER	1
3	PT02E-16-23P(027)	MOTOR/ENCODER/THERM CONNECTOR	1
4	270-00219	MOTOR/ENCODER/THERM CONNECTOR	1

NO.	PART NUMBER	DESCRIPTION	QTY
1	290-00056	ENCODER	1
2	OH35-2000P4-L6-5V	ENCODER	1
3	PT02E-16-23P(027)	MOTOR/ENCODER/THERM CONNECTOR	1
4	270-00219	MOTOR/ENCODER/THERM CONNECTOR	1

NO.	PART NUMBER	DESCRIPTION	QTY
1	290-00056	ENCODER	1
2	OH35-2000P4-L6-5V	ENCODER	1
3	PT02E-16-23P(027)	MOTOR/ENCODER/THERM CONNECTOR	1
4	270-00219	MOTOR/ENCODER/THERM CONNECTOR	1

NO.	PART NUMBER	DESCRIPTION	QTY
1	290-00056	ENCODER	1
2	OH35-2000P4-L6-5V	ENCODER	1
3	PT02E-16-23P(027)	MOTOR/ENCODER/THERM CONNECTOR	1
4	270-00219	MOTOR/ENCODER/THERM CONNECTOR	1

NO.	PART NUMBER	DESCRIPTION	QTY
1	290-00056	ENCODER	1
2	OH35-2000P4-L6-5V	ENCODER	1
3	PT02E-16-23P(027)	MOTOR/ENCODER/THERM CONNECTOR	1
4	270-00219	MOTOR/ENCODER/THERM CONNECTOR	1

NO.	PART NUMBER	DESCRIPTION	QTY
1	290-00056	ENCODER	1
2	OH35-2000P4-L6-5V	ENCODER	1
3	PT02E-16-23P(027)	MOTOR/ENCODER/THERM CONNECTOR	1
4	270-00219	MOTOR/ENCODER/THERM CONNECTOR	1

NO.	PART NUMBER	DESCRIPTION	QTY
1	290-00056	ENCODER	1
2	OH35-2000P4-L6-5V	ENCODER	1
3	PT02E-16-23P(027)	MOTOR/ENCODER/THERM CONNECTOR	1
4	270-00219	MOTOR/ENCODER/THERM CONNECTOR	1

NO.	PART NUMBER	DESCRIPTION	QTY
1	290-00056	ENCODER	1
2	OH35-2000P4-L6-5V	ENCODER	1
3	PT02E-16-23P(027)	MOTOR/ENCODER/THERM CONNECTOR	1
4	270-00219	MOTOR/ENCODER/THERM CONNECTOR	1

NO.	PART NUMBER	DESCRIPTION	QTY
1	290-00056	ENCODER	1
2	OH35-2000P4-L6-5V	ENCODER	1
3	PT02E-16-23P(027)	MOTOR/ENCODER/THERM CONNECTOR	1
4	270-00219	MOTOR/ENCODER/THERM CONNECTOR	1

NO.	PART NUMBER	DESCRIPTION	QTY
1	290-00056	ENCODER	1
2	OH35-2000P4-L6-5V	ENCODER	1
3	PT02E-16-23P(027)	MOTOR/ENCODER/THERM CONNECTOR	1
4	270-00219	MOTOR/ENCODER/THERM CONNECTOR	1

NO.	PART NUMBER	DESCRIPTION	QTY
1	290-00056	ENCODER	1
2	OH35-2000P4-L6-5V	ENCODER	1
3	PT02E-16-23P(027)	MOTOR/ENCODER/THERM CONNECTOR	1
4	270-00219	MOTOR/ENCODER/THERM CONNECTOR	1

NO.	PART NUMBER	DESCRIPTION	QTY
1	290-00056	ENCODER	1
2	OH35-2000P4-L6-5V	ENCODER	1
3	PT02E-16-23P(027)	MOTOR/ENCODER/THERM CONNECTOR	1
4	270-00219	MOTOR/ENCODER/THERM CONNECTOR	1

NO.	PART NUMBER	DESCRIPTION	QTY
1	290-00056	ENCODER	1
2	OH35-2000P4-L6-5V	ENCODER	1
3	PT02E-16-23P(027)	MOTOR/ENCODER/THERM CONNECTOR	1
4	270-00219	MOTOR/ENCODER/THERM CONNECTOR	1

NO.	PART NUMBER	DESCRIPTION	QTY
1	290-00056	ENCODER	1
2	OH35-2000P4-L6-5V	ENCODER	1
3	PT02E-16-23P(027)	MOTOR/ENCODER/THERM CONNECTOR	1
4	270-00219	MOTOR/ENCODER/THERM CONNECTOR	1

NO.	PART NUMBER	DESCRIPTION	QTY
1	290-00056	ENCODER	1
2	OH35-2000P4-L6-5V	ENCODER	1
3	PT02E-16-23P(027)	MOTOR/ENCODER/THERM CONNECTOR	1
4	270-00219	MOTOR/ENCODER/THERM CONNECTOR	1

NO.	PART NUMBER	DESCRIPTION	QTY
1	290-00056	ENCODER	1
2	OH35-2000P4-L6-5V	ENCODER	1
3	PT02E-16-23P(027)	MOTOR/ENCODER/THERM CONNECTOR	1
4	270-00219	MOTOR/ENCODER/THERM CONNECTOR	1

NO.	PART NUMBER	DESCRIPTION	QTY
1	290-00056	ENCODER	1
2	OH35-2000P4-L6-5V	ENCODER	1
3	PT02E-16-23P(027)	MOTOR/ENCODER/THERM CONNECTOR	1
4	270-00219	MOTOR/ENCODER/THERM CONNECTOR	1

NO.	PART NUMBER	DESCRIPTION	QTY
1	290-00056	ENCODER	1
2	OH35-2000P4-L6-5V	ENCODER	1
3	PT02E-16-23P(027)	MOTOR/ENCODER/THERM CONNECTOR	1
4	270-00219	MOTOR/ENCODER/THERM CONNECTOR	1

NO.	PART NUMBER	DESCRIPTION	QTY
1	290-00056	ENCODER	1
2	OH35-2000P4-L6-5V	ENCODER	1
3	PT02E-16-23P(027)	MOTOR/ENCODER/THERM CONNECTOR	1
4	270-00219	MOTOR/ENCODER/THERM CONNECTOR	1

NO.	PART NUMBER	DESCRIPTION	QTY
1	290-00056	ENCODER	1
2	OH35-2000P4-L6-5V	ENCODER	1
3	PT02E-16-23P(027)	MOTOR/ENCODER/THERM CONNECTOR	1
4	270-00219	MOTOR/ENCODER/THERM CONNECTOR	1

NO.	PART NUMBER	DESCRIPTION	QTY
1	290-00056	ENCODER	1
2	OH35-2000P4-L6-5V	ENCODER	1
3	PT02E-16-23P(027)	MOTOR/ENCODER/THERM CONNECTOR	1
4	270-00219	MOTOR/ENCODER/THERM CONNECTOR	1

NO.	PART NUMBER	DESCRIPTION	QTY
1	290-00056	ENCODER	1
2	OH35-2000P4-L6-5V	ENCODER	1
3	PT02E-16-23P(027)	MOTOR/ENCODER/THERM CONNECTOR	1
4	270-00219	MOTOR/ENCODER/THERM CONNECTOR	1

NO.	PART NUMBER	DESCRIPTION	QTY
1	290-00056	ENCODER	1
2	OH35-2000P4-L6-5V	ENCODER	1
3	PT02E-16-23P(027)	MOTOR/ENCODER/THERM CONNECTOR	1
4	270-00219	MOTOR/ENCODER/THERM CONNECTOR	1

NO.	PART NUMBER	DESCRIPTION	QTY
1	290-00056	ENCODER	1
2	OH35-2000P4-L6-5V	ENCODER	1
3	PT02E-16-23P(027)	MOTOR/ENCODER/THERM CONNECTOR	1
4	270-00219	MOTOR/ENCODER/THERM CONNECTOR	1

NO.	PART NUMBER	DESCRIPTION	QTY
1	290-00056	ENCODER	1
2	OH35-2000P4-L6-5V	ENCODER	1
3	PT02E-16-23P(027)	MOTOR/ENCODER/THERM CONNECTOR	1
4	270-00219	MOTOR/ENCODER/THERM CONNECTOR	1

NO.	PART NUMBER	DESCRIPTION	QTY
1	290-00056	ENCODER	1
2	OH35-2000P4-L6-5V	ENCODER	1
3	PT02E-16-23P(027)	MOTOR/ENCODER/THERM CONNECTOR	1
4	270-00219	MOTOR/ENCODER/THERM CONNECTOR	1

NO.	PART NUMBER	DESCRIPTION	QTY
1	290-00056	ENCODER	1
2	OH35-2000P4-L6-5V	ENCODER	1
3	PT02E-16-23P(027)	MOTOR/ENCODER/THERM CONNECTOR	1
4	270-00219	MOTOR/ENCODER/THERM CONNECTOR	1

NO.	PART NUMBER	DESCRIPTION	QTY
1	290-00056	ENCODER	1
2	OH35-2000P4-L6-5V	ENCODER	1
3	PT02E-16-23P(027)	MOTOR/ENCODER/THERM CONNECTOR	1
4	270-00219	MOTOR/ENCODER/THERM CONNECTOR	1

NO.	PART NUMBER	DESCRIPTION	QTY
1	290-00056	ENCODER	1
2	OH35-2000P4-L6-5V	ENCODER	1
3	PT02E-16-23P(027)	MOTOR/ENCODER/THERM CONNECTOR	1
4	270-00219	MOTOR/ENCODER/THERM CONNECTOR	1

NO.	PART NUMBER	DESCRIPTION	QTY
1	290-00056	ENCODER	1
2	OH35-2000P4-L6-5V	ENCODER	1
3	PT02E-16-23P(027)	MOTOR/ENCODER/THERM CONNECTOR	1
4	270-00219	MOTOR/ENCODER/THERM CONNECTOR	1