

**MOTOR DATA @ 460 VAC (SINE)**

MOTOR PARAMETERS	UNITS	VALUE
HORSEPOWER	HP RATED	28.8
KILOWATTS	KW RATED	21.5
MAX. OPERATING SPEED	N. MAX RPM	3000
SPEED @ RATED TORQUE	N RATED RPM	2400
* CONTINUOUS RATED TORQUE @ 2400 RPM	N-LBS[Nm]	757.0 [85.0]
* CONTINUOUS STALL TORQUE	N-LBS[Nm]	880.0 [98.8]
CONTINUOUS LINE CURRENT	AMPS[RMS/φ]	34.6
PEAK TORQUE	N-LBS[Nm]	2640.0 [296.0]
PEAK CURRENT	AMPS[RMS/φ]	106.1
MAX. THEORETICAL ACCEL.	RAD/SEC <sup>2</sup>	25.631
TORQUE SENSITIVITY	Kt [N-LBS/AMP/RMS/φ][Nm/AMP/RMS/φ]	24.9 [2.8]
BACK EMF (LINE TO LINE)	Vrms/Krpm	158.0
D.C. RESISTANCE (P-P)	OHMS	.29
INDUCTANCE (P-P)	MILLIHENRIES	4.8
ROTOR INERTIA	Jm [N-LBS-SEC <sup>2</sup> ][Kg-M <sup>2</sup> ]	.103 [0.116]
STATIC FRICTION	Tf [N-LBS][Nm]	11.4 [1.3]

\*25°C AMBIENT WITH A MAXIMUM CASE TEMPERATURE OF 100°C ON MOTOR. MOTOR MOUNTED ON A 14" X 14" X 3/4" ALUMINUM HEATSINK. THERMOSTAT IN STATOR WINDINGS WILL OPEN IF WINDING TEMPERATURE EXCEEDS 155°C. THIS ALLOWS FOR AN APPROXIMATE +10% HEADROOM IN THE CONTINUOUS TORQUE RATING BEFORE THERMOSTAT OPENS.

- MECHANICAL NOTES:**
1. AXIAL LOAD: 100 LBS MAX
  2. RADIAL LOAD: 250 LBS MAX @ 1" FROM FACE
  3. MOTOR SEALED TO IP65.
  4. MOTOR WEIGHT: 129 LBS [ 58.5 kg]
  5. MOTOR FINISH: BLACK EPOXY
  6. MILLIMETERS (INCHES)

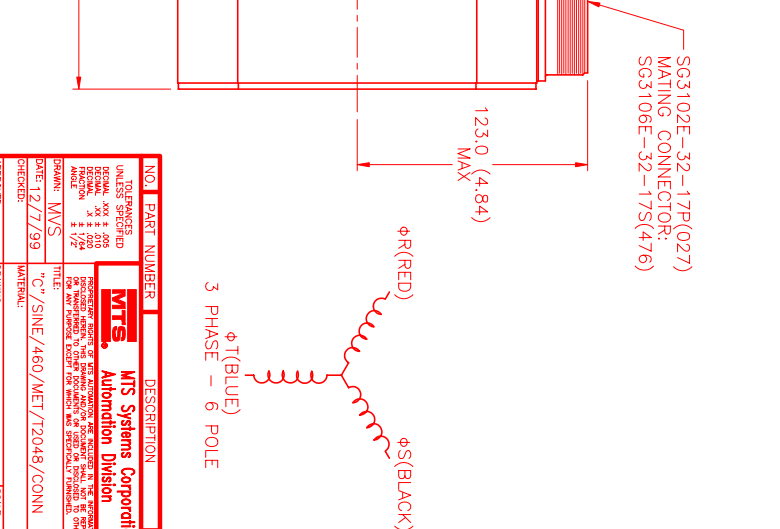
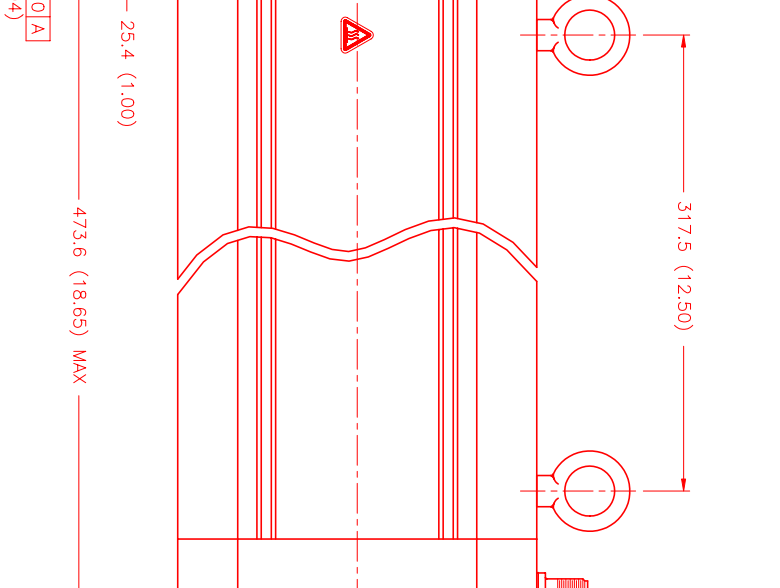
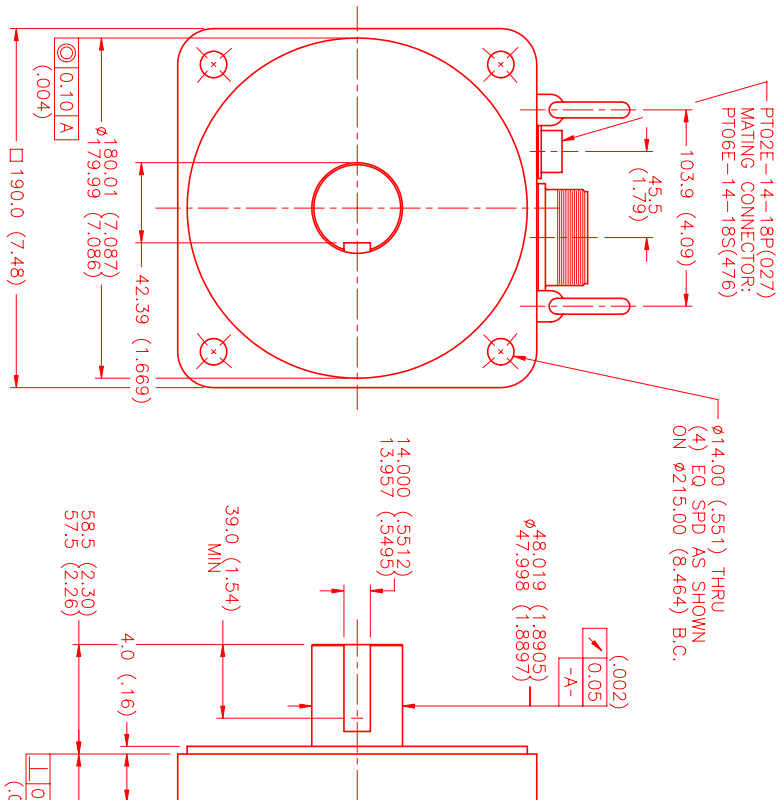
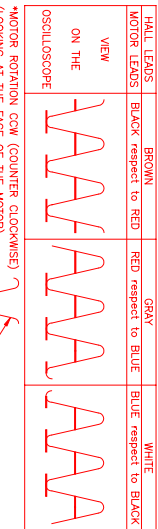
**ENCODER: (290-00073)**  
OH48-2048P6-L6-5V

**CONNECTION CHART**  
MOTOR CONNECTOR:  
SG3102E-32-17P(027)  
(270-00066)

MOTOR WIRE LEADS	WIRE FUNCTION	WIRE COLOR
A	φR	RED
B	φS	BLACK
C	φT	BLUE
D	PE GND	GRN/YEL

**ENCODER/THERM CONNECTOR:**  
PT02E-14-18P(027)  
(270-00024)

ENC/THERM WIRE LEADS	WIRE FUNCTION	WIRE COLOR
T	GROUND	BLACK
K	+5VDC	RED
B	CH A	BLUE
N	CH B	GREEN
P	CH C	YELLOW
M	CH Z	YELLOW
U	CH Z	YEL/BLK
E	CH U	BROWN
R	CH U	BRN/BLK
F	CH V	GRAY
S	CH V	GRAY/BLK
G	CH W	WHITE
H	CH W	WHT/BLK
D	GND/CABLE	SHLD
A	THERM	BLACK
L	THERM	BLACK
J	GND	GRN/YEL



NO. PART NUMBER	DESCRIPTION	QTY.
UNLESS SPECIFIED		
DECIMAL: MAX # DIGITS		
FRACTIONAL: MAX # DIGITS		
ANGLES: MAX # DIGITS		
DATE: 12/7/99	TITLE: "C"/SINE/460/MET/12048/CONN	REV:
DRAWN: MVS	CHECKED:	APPROVED:
ISSUING: MPM1903CSJ7JY1N	SCALE: 1/2:1	

DATE: "C"/SINE/460/MET/12048/CONN	DRAWING NUMBER: MPM1903CSJ7JY1N
REVISIONS	
REV. DESCRIPTION	DATE APPD.
PRELIMINARY	12/7/99 MVS