

MOTOR DATA @ 230 VAC (TRAP)

MOTOR PARAMETERS	UNITS	VALUE
HORSEPOWER	HP RATED	14.4
KILOWATTS	KW RATED	10.8
MAX. OPERATING SPEED	N. MAX RPM	1500
SPEED @ RATED TORQUE	N RATED RPM	1200
* CONTINUOUS RATED TORQUE @ 1200 RPM	IN-LBS[Nm]	757.0 [85.0]
* CONTINUOUS STALL TORQUE	IN-LBS[Nm]	880.0 [98.8]
CONTINUOUS LINE CURRENT	AMPS	49.0
PEAK TORQUE	IN-LBS[Nm]	2640.0 [296.0]
PEAK CURRENT	AMPS	148.0
MAX. THEORETICAL ACCEL.	RAD/SEC ²	25.631
TORQUE SENSITIVITY	Kt IN-LBS/AMP[Nm/AMP]	17.6 [2.0]
BACK EMF (LINE TO LINE)	Vrms/Krpm	158.0
D.C. RESISTANCE (P-P)	OHMS	.29
INDUCTANCE (P-P)	MILLIHENRIES	4.8
ROTOR INERTIA	Jm IN-LBS-SEC ² [Kg-M ²]	.103 [0.116]
STATIC FRICTION	Tf IN-LBS[Nm]	11.4 [1.3]

*25°C AMBIENT WITH A MAXIMUM CASE TEMPERATURE OF 100°C ON MOTOR. MOTOR MOUNTED ON A 14" X 14" X 3/4" ALUMINUM HEATSINK. THERMOSTAT IN STATOR WINDINGS WILL OPEN IF WINDING TEMPERATURE EXCEEDS 155°C. THIS ALLOWS FOR AN APPROXIMATE +10% HEADROOM IN THE CONTINUOUS TORQUE RATING BEFORE THERMOSTAT OPENS.

- MECHANICAL NOTES:**
- AXIAL LOAD: 100 LBS MAX
 - RADIAL LOAD: 250 LBS MAX @ 1" FROM FACE
 - MOTOR SEALED TO IP65
 - MOTOR WEIGHT: 129 LBS [58.5 kg]
 - MOTOR FINISH: BLACK EPOXY
 - MILLIMETERS (INCHES)

ENCODER: (290-00064)
OH48-1000P6-L6-5V

CONNECTION CHART

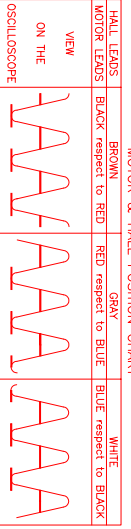
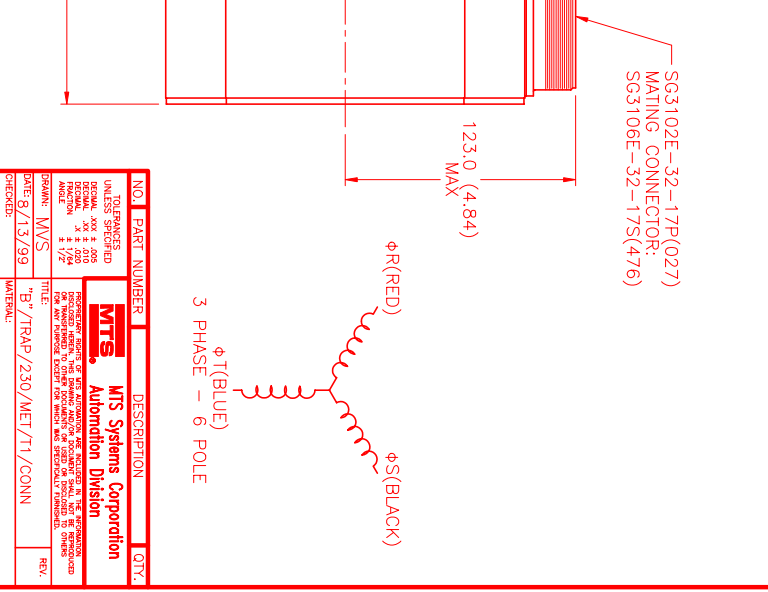
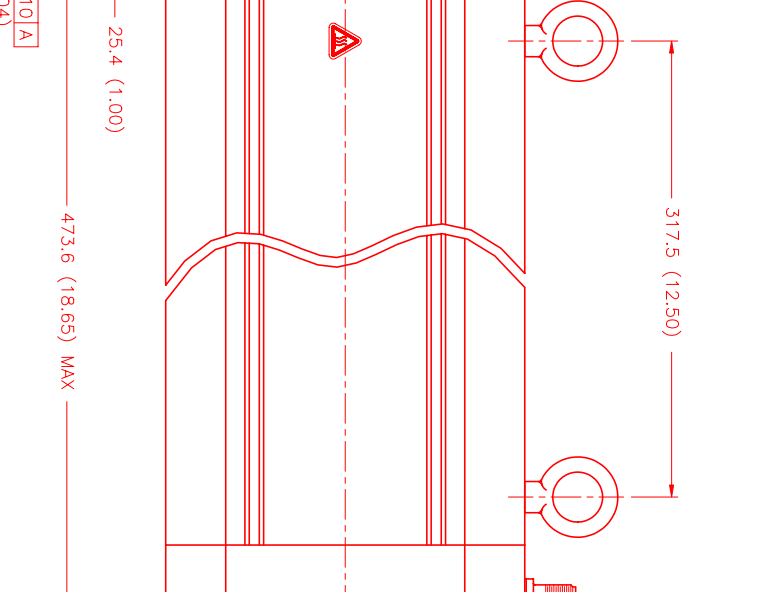
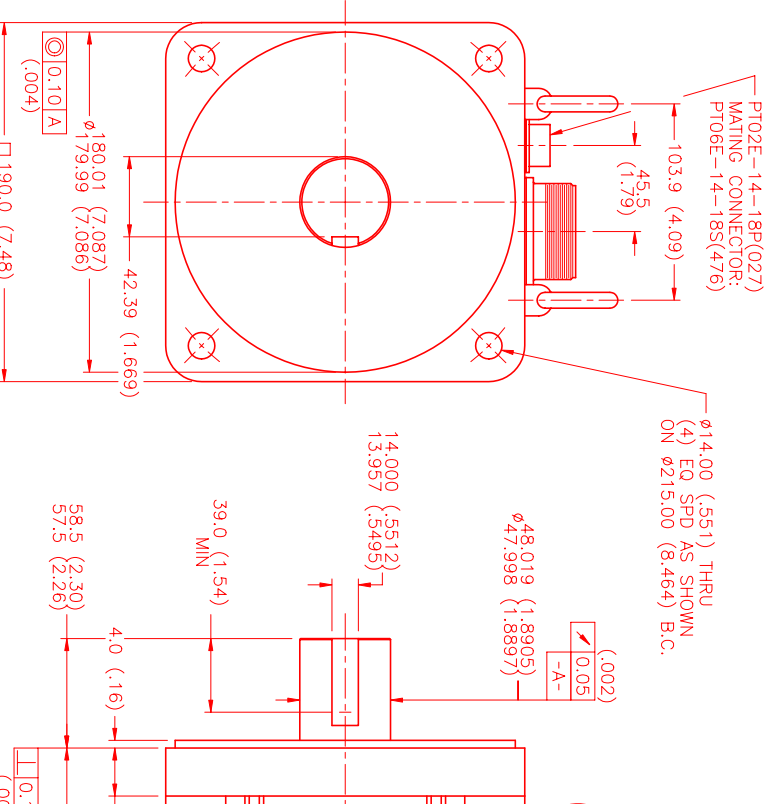
MOTOR CONNECTOR:
SG3102E-32-17P(027)
(270-00066)

MOTOR WIRE LEADS	WIRE FUNCTION	WIRE COLOR
A	ΦR	BLACK
B	ΦS	RED
C	ΦT	BLUE
D	PE GND	GRN/YEL

ENCODER/THERM CONNECTOR:

PT02E-14-18P(027)
(270-00024)

ENC/THERM WIRE LEADS	WIRE FUNCTION	WIRE COLOR
T	GROUND	BLACK
K	+5VDC	RED
B	CH A	BLUE
C	CH A'	BLUE/BLK
N	CH B	GREEN
P	CH B'	GRN/BLK
M	CH Z	YELLOW
U	CH Z'	YEL/BLK
E	CH U	BROWN
R	CH U'	BRN/BLK
F	CH V	GRAY
S	CH V'	GRAY/BLK
G	CH W	WHITE
H	CH W'	WHT/BLK
D	GND/CABLE	SHLD
A	THERM	BLACK
L	THERM	BLACK
J	GND	GRN/YEL



*MOTOR ROTATION CCW (COUNTER CLOCKWISE) (LOOKING AT THE FACE OF THE MOTOR)

WAVE REPRESENTING STATOR OUTPUT
WAVE REPRESENTING HALL SENSOR

NO. PART NUMBER	DESCRIPTION	QTY.
UNLESS SPECIFIED		
DESIGN: MVS		
DATE: 8/13/99		
CHECKED: MVS		
APPROVED:		

MTS MTS Systems Corporation
Automation Division

SCALE: 1/2:1

TRAP: 'B' /TRAP /230/MET/11/CONN

REVISIONS

REV.	DESCRIPTION	DATE	APPD.
PRELIMINARY		8/13/99	MVS

FORMING: MPM1903BTG7JM1N