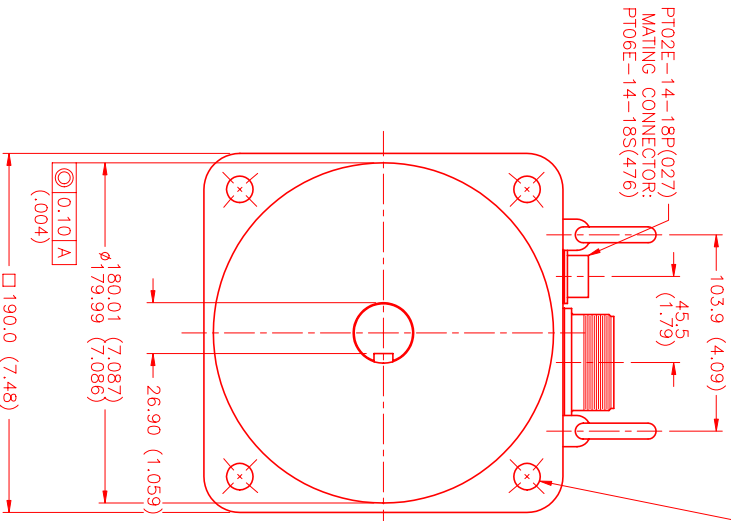


MOTOR DATA @ 230 VAC (SINE)		
MOTOR PARAMETERS	UNITS	VALUE
HORSEPOWER	HP RATED	10.5
KILOWATTS	KW RATED	7.8
MAX. OPERATING SPEED	N MAX	1500
SPEED @ RATED TORQUE	N RATED	1200
* CONTINUOUS RATED TORQUE @ 1200 RPM	IN-LBS [Nm]	550.0 [61.8]
* CONTINUOUS STALL TORQUE	IN-LBS [Nm]	640.0 [71.9]
CONTINUOUS LINE CURRENT	AMPS (RMS/φ)	23.5
PEAK TORQUE	IN-LBS [Nm]	1920.0 [215.0]
PEAK CURRENT	AMPS (RMS/φ)	75.6
MAX. THEORETICAL ACCEL.	RAD/SEC ²	26.891
TORQUE SENSITIVITY	Kt [IN-LBS/AMP (RMS/φ) / Nm/AMP (RMS/φ)]	24.9 [2.81]
BACK EMF (LINE TO LINE)	±10% Vrms /krpm	158.0
D.C. RESISTANCE (P-P)	±10% OHMS	.44
INDUCTANCE (P-P)	±10% MILLIHENRIES	6.8
ROTOR INERTIA	Jm [IN-LBS-SEC ² / Kg-M ²]	.0714 [0.00807]
STATIC FRICTION	Tf [IN-LBS / Nm]	9.8 [1.1]

*25°C AMBIENT WITH A MAXIMUM CASE TEMPERATURE OF 100°C ON MOTOR. MOTOR MOUNTED ON A 14" X 14" X 14" X 3/4" ALUMINUM HEATSINK. THERMOSTAT IN STATOR WINDINGS WILL OPEN IF WINDING TEMPERATURE EXCEEDS 155°C. THIS ALLOWS FOR AN APPROXIMATE +10% HEADROOM IN THE CONTINUOUS TORQUE RATING BEFORE THERMOSTAT OPENS.

- MECHANICAL NOTES:**
1. AXIAL LOAD: 100 LBS MAX
 2. RADIAL LOAD: 250 LBS MAX @ 1" FROM FACE
 3. MOTOR SEALED TO IP65.
 4. MOTOR WEIGHT: 98 LBS. [44.5 kg]
 5. MOTOR FINISH: BLACK EPOXY
 6. MILLIMETERS (INCHES)



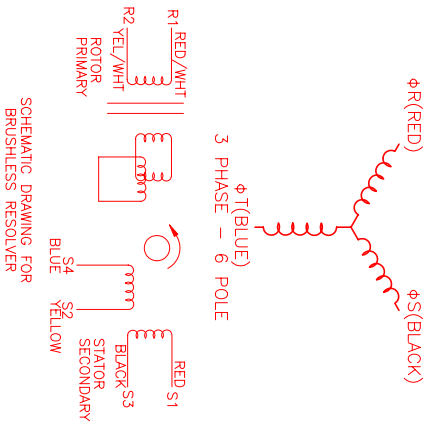
CONNECTION CHART

MOTOR CONNECTOR:
SG3102E-32-17P(027)
(270-00066)

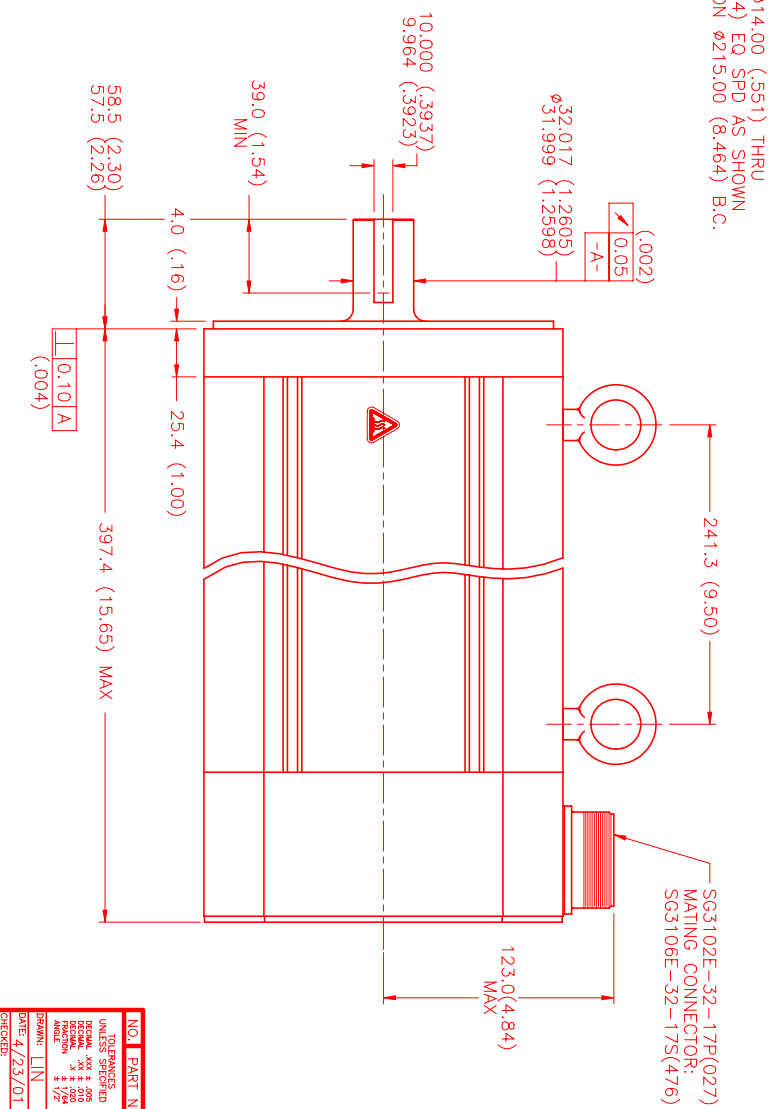
MOTOR WIRE LEADS	RES/THERM WIRE LEADS				
PIN	WIRE FUNCTION	WIRE COLOR	PIN	WIRE FUNCTION	WIRE COLOR
A	φR	RED	U	THERM	BLACK
B	φS	BLACK	N	THERM	BLACK
C	φT	BLUE	H	SIN	YELLOW
D	PE GND	GRN/YEL	G	COS GND	BLACK

RESOLVER/THERM CONNECTOR:
PT02E-14-18P(027)
(270-00024)

MOTOR WIRE LEADS	RES/THERM WIRE LEADS				
PIN	WIRE FUNCTION	WIRE COLOR	PIN	WIRE FUNCTION	WIRE COLOR
A	φR	RED	A	-	-
B	φS	BLACK	B	-	-
C	φT	BLUE	C	-	-
D	PE GND	GRN/YEL	J	-	-
			K	-	-
			L	-	-
			M	-	-
			T	-	-



SCHEMATIC DRAWING FOR BRUSHLESS RESOLVER



SG3102E-32-17P(027)
MATING CONNECTOR:
SG3106E-32-17S(476)

NO.	PART NUMBER	DESCRIPTION	QTY.
1	UNLSE3200	RESOLVER/THERM CONNECTOR	1
2	UNLSE3200	MOTOR	1

DATE: 4/23/01
DRAWN: JLN
CHECKED: JLN
APPROVED: JLN

SCALE: 1/2:1

MTS Automation Division

REV.	DESCRIPTION	DATE	APP.
PRELIMINARY		4/23/01	JLN