

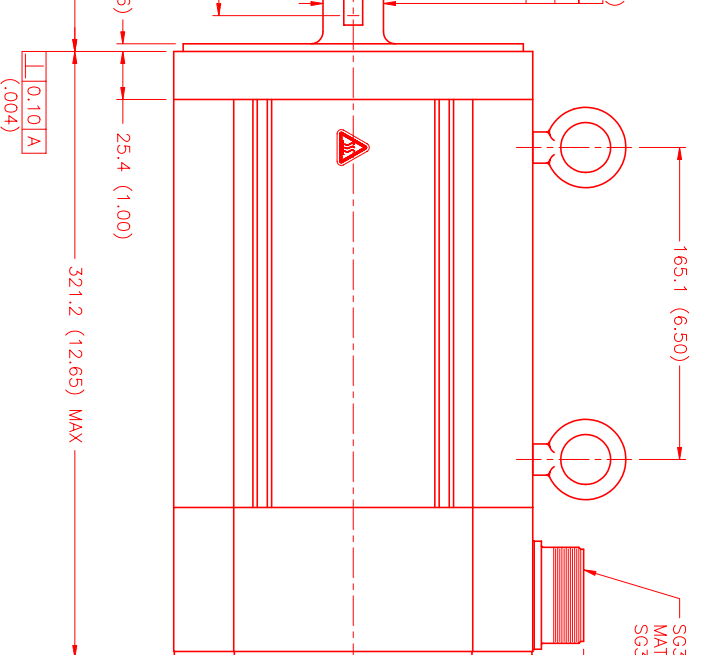
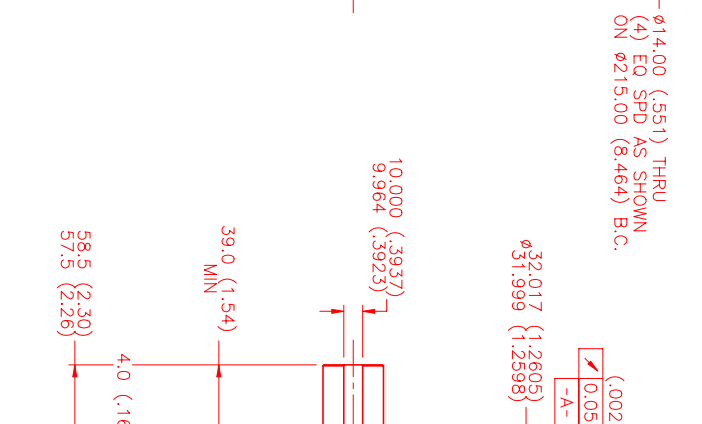
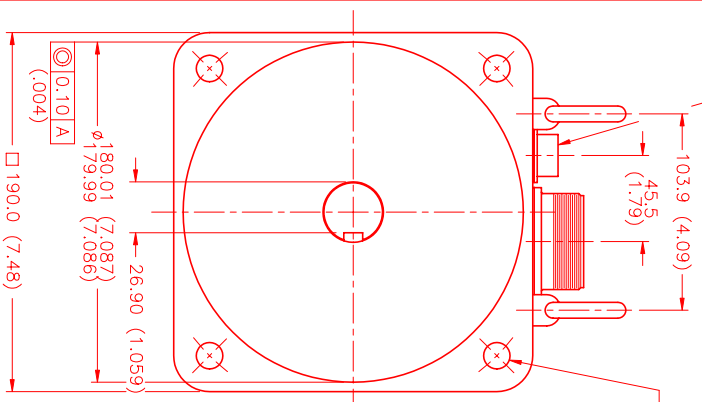
MOTOR DATA @ 460 VAC (TRAP)

MOTOR PARAMETERS	UNITS	VALUE
HORSEPOWER	HP RATED	6.5
KILOWATTS	KW RATED	5.0
MAX. OPERATING SPEED	N. MAX RPM	1500
SPEED @ RATED TORQUE	N RATED RPM	1200
* CONTINUOUS RATED TORQUE @ 1200 RPM	IN-LBS[Nm]	344.0 [38.6]
* CONTINUOUS STALL TORQUE	IN-LBS[Nm]	400.0 [44.9]
CONTINUOUS LINE CURRENT	AMPS	11.2
PEAK TORQUE	IN-LBS[Nm]	1200.0 [134.8]
PEAK CURRENT	AMPS	33.6
MAX. THEORETICAL ACCEL.	RAD/SEC ²	29,197
TORQUE SENSITIVITY	Kt IN-LBS/AMP[Nm/AMP]	35.0 [4.0]
BACK EMF (LINE TO LINE)	Vrms/Krpm	316.0
D.C. RESISTANCE (P-P)	OHMS	4.6
INDUCTANCE (P-P)	MILLIHENRIES	60.2
ROTOR INERTIA	Jm [IN-LBS-SEC ²] [Kg-M ²]	.0411 [0.00464]
STATIC FRICTION	Tf [IN-LBS] [Nm]	8.2 [.92]

*25°C AMBIENT WITH A MAXIMUM CASE TEMPERATURE OF 100°C ON MOTOR. MOTOR MOUNTED ON A 14" X 14" X 3/4" ALUMINUM HEATSINK. THERMOSTAT IN STATOR WINDINGS WILL OPEN IF WINDING TEMPERATURE EXCEEDS 155°C. THIS ALLOWS FOR AN APPROXIMATE +10% HEADROOM IN THE CONTINUOUS TORQUE RATING BEFORE THERMOSTAT OPENS.

- MECHANICAL NOTES:**
- AXIAL LOAD: 100 LBS MAX
 - RADIAL LOAD: 250 LBS MAX @ 1" FROM FACE
 - MOTOR SEALED TO IP65
 - MOTOR WEIGHT: 67 LBS [30.4 kg]
 - MOTOR FINISH: BLACK EPOXY
 - MILLIMETERS (INCHES)

ENCODER: (290-00142)
OH48-1024P6-L6-5V

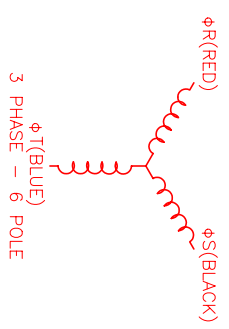


ENCODER/THERM CONNECTOR: PT02E-14-18P(027) (270-00024)

ENC/THERM	WIRE	WIRE LEADS
PIN	FUNCTION	WIRE COLOR
T	GROUND	BLACK
K	+5VDC	RED
B	CH A	BLUE
C	CH A	BLUE
N	CH B	GREEN
P	CH B	GRN/BLK
M	CH Z	YELLOW
U	CH Z	YEL/BLK
E	CH U	BROWN
R	CH U	BRN/BLK
F	CH V	GRAY
S	CH V	GRAY/BLK
G	CH W	WHITE
H	CH W	WHT/BLK
D	GND/CABLE	SHLD
A	THERM	BLACK
L	THERM	BLACK
J	GND	GRN/YEL

CONNECTION CHART MOTOR CONNECTOR: SG3102E-32-17P(027) (270-00066)

MOTOR	WIRE	WIRE LEADS
PIN	FUNCTION	WIRE COLOR
A	φR	RED
B	φS	BLACK
C	φT	BLUE
D	PE GND	GRN/YEL



MOTOR & HALL POSITION CHART

HALL LEADS	BROWN	GRAY	WHITE
MOTOR LEADS	BLACK respect to RED	RED respect to BLUE	BLUE respect to BLACK

VIEW ON THE OSCILLOSCOPE

*MOTOR ROTATION COW (COUNTER CLOCKWISE) (LOOKING AT THE FACE OF THE MOTOR)

WAVE REPRESENTING STATOR OUTPUT WAVE REPRESENTING HALL SENSOR

NO. PART NUMBER	DESCRIPTION	QTY.
UNLESS SPECIFIED		
DESIGN: MVS	DATE: 2/8/99	REV: 1/2
CHECKED: MVS	TITLE: "D" / TRAP / 460 / MET / T1024 / CONN	MATERIAL:
APPROVED: MVS	DRAWING NUMBER: MPM1901DTU7JX1N	SCALE: 1/2=1

MTS MTS Systems Corporation
Automation Division

PROPOSED: THIS DRAWING IS FOR INFORMATION ONLY. IT IS NOT TO BE USED FOR MANUFACTURE OR REVISIONS TO OTHER DRAWINGS. ALL DIMENSIONS ARE IN INCHES UNLESS OTHERWISE SPECIFIED. DIMENSIONS IN PARENTHESES ARE IN MILLIMETERS. DIMENSIONS IN MILLIMETERS ARE NOT TO BE USED FOR MANUFACTURE OR REVISIONS TO OTHER DRAWINGS. ALL DIMENSIONS ARE IN MILLIMETERS UNLESS OTHERWISE SPECIFIED. DIMENSIONS IN PARENTHESES ARE IN INCHES.