

MOTOR DATA @ 460 VAC (TRAP)

MOTOR PARAMETERS	UNITS	VALUE
HORSEPOWER	HP	6.5
KILOWATTS	KW	5.0
MAX. OPERATING SPEED	N MAX	1500
SPEED @ RATED TORQUE	N RATED	1200
* CONTINUOUS RATED TORQUE @ 1200 RPM	IN-LBS [Nm]	344.0 [38.6]
* CONTINUOUS STALL TORQUE	IN-LBS [Nm]	400.0 [44.9]
CONTINUOUS LINE CURRENT	AMPS	11.2
PEAK TORQUE	IN-LBS [Nm]	1200.0 [134.8]
PEAK CURRENT	AMPS	33.6
MAX. THEORETICAL ACCEL.	RAD/SEC ²	29,194
TORQUE SENSITIVITY	Kt [IN-LBS/AMP] [Nm/AMP]	35.0 [4.0]
BACK EMF (LINE TO LINE)	Vrms/Krpm	316.0
D.C. RESISTANCE (P-P)	OHMS	4.6
INDUCTANCE (P-P)	MILLIHENRIES	60.2
ROTOR INERTIA W/BRAKE	Jm [IN-LBS-SEC ²] [Kg-M ²]	.0411 [0.00464]
STATIC FRICTION	Tf [IN-LBS] [Nm]	8.2 [.92]

*25°C AMBIENT WITH A MAXIMUM CASE TEMPERATURE OF 100°C ON MOTOR. MOTOR MOUNTED ON A 14" X 14" X 14" X 3/4" ALUMINUM HEATSINK. THERMOSTAT IN STATOR WINDINGS WILL OPEN IF WINDING TEMPERATURE EXCEEDS 155°C. THIS ALLOWS FOR AN APPROXIMATE +10% HEADROOM IN THE CONTINUOUS TORQUE RATING BEFORE THERMOSTAT OPENS.

MECHANICAL NOTES:

- AXIAL LOAD: 100 LBS MAX
- RADIAL LOAD: 250 LBS MAX @ 1" FROM FACE
- MOTOR SEALED TO IP65.
- MOTOR WEIGHT: 85 LBS. [38.6 kg]
- MOTOR FINISH: BLACK EPOXY
- MILLIMETERS (INCHES)

FAILSAFE BRAKE:

MIN HOLDING TORQUE: 90 FT-LBS
INPUT VOLTAGE: 24 VOLTS

CONNECTION CHART

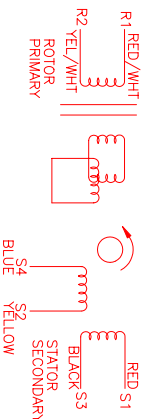
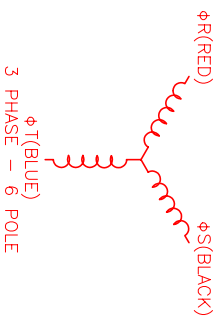
MOTOR CONNECTOR:
SG3102E-32-17P(027)
(270-00066)

PIN	WIRE FUNCTION	WIRE COLOR
A	ΦR	RED
B	ΦS	BLACK
C	ΦT	BLUE
D	PE GND	GRN/YEL

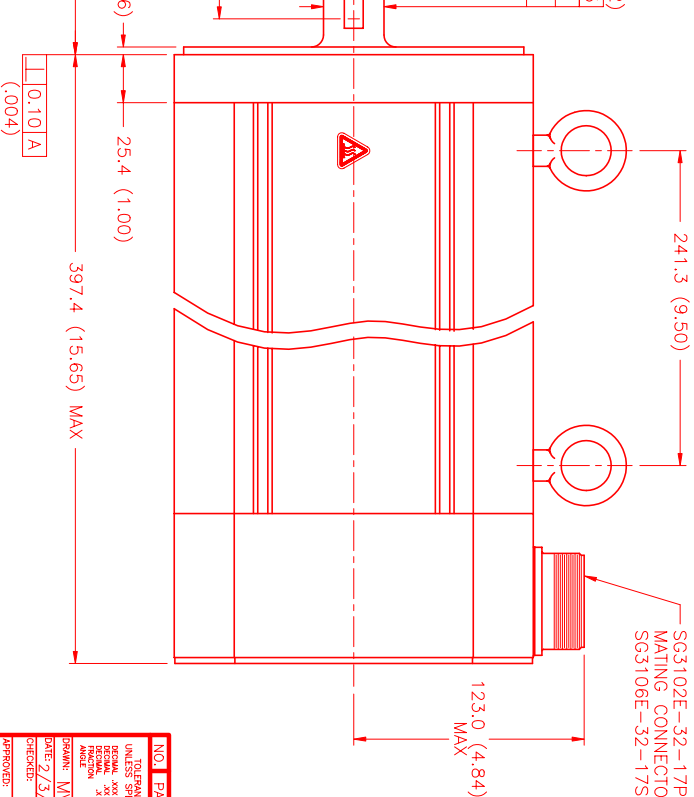
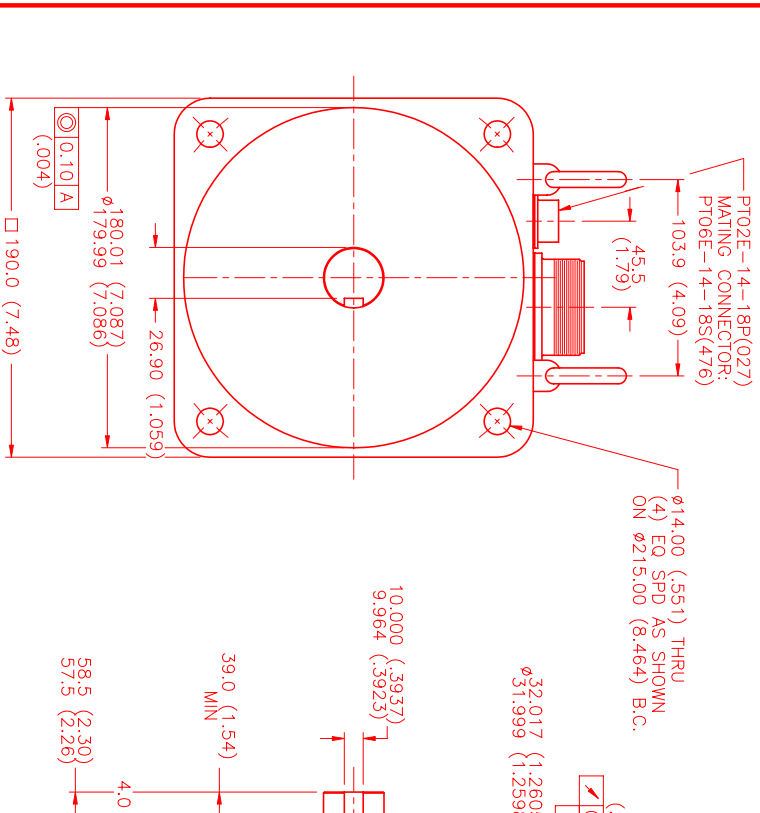
RES/THERM/BRK CONNECTOR:
PT02E-14-18P(027)
(270-00024)

PIN	WIRE FUNCTION	WIRE COLOR
U	THERM	BLACK
N	THERM	BLACK
H	SIN	YELLOW
G	COS GND	BLACK
S	COS	RED
F	SIN GND	BLUE
R	REF GND	YEL/WHI
E	REF	RED/WHI
D	RES. SHLD	GRN/YEL
P	GND	GRN/YEL
A	BRK (+)	DIODE
B	BRK (-)	1N4007
C	BRK SHLD	-
J	-	-
K	-	-
L	-	-
M	-	-
T	-	-

REV	DESCRIPTION	DATE	APPD.
PRELIMINARY		8/12/99	MVS



SCHEMATIC DRAWING FOR BRUSHLESS RESOLVER



NO.	PART NUMBER	DESCRIPTION	QTY.
UNLESS SPECIFIED			
DESIGN			
REVISIONS			
DATE			
BY			
CHECKED			
APPROVED			

MTS MTS Systems Corporation
Automation Division

FORMING: MPM1901DTUG1R SCALE: 1/2:1