

MOTOR DATA @ 230 VAC (TRAP)

MOTOR PARAMETERS	UNITS	VALUE
HORSEPOWER	HP RATED	13.1
KILOWATTS	KW RATED	9.8
MAX. OPERATING SPEED	N. MAX RPM	3000
SPEED @ RATED TORQUE	N RATED RPM	2400
* CONTINUOUS RATED TORQUE @ 2400 RPM	IN-LBS [Nm]	344.0 [38.6]
* CONTINUOUS STALL TORQUE	IN-LBS [Nm]	400.0 [44.9]
CONTINUOUS LINE CURRENT	AMPS	44.9
PEAK TORQUE	IN-LBS [Nm]	1200.0 [134.8]
PEAK CURRENT	AMPS	134.8
MAX. THEORETICAL ACCEL.	RAD/SEC ²	24,194
TORQUE SENSITIVITY	Kt IN-LBS/AWP [Nm/AWP]	8.9 [1.0]
BACK EMF (LINE TO LINE)	Vrms/Krpm	79.0
D.C. RESISTANCE (P-P)	OHMS	3.31
INDUCTANCE (P-P)	MILLIHENRIES	3.70
ROTOR INERTIA W/BRK	Jm [IN-LBS-SEC ²] [Kg-M ²]	.0496 [0.00560]
STATIC FRICTION	Tf [IN-LBS] [Nm]	8.2 [.92]

*25°C AMBIENT WITH A MAXIMUM CASE TEMPERATURE OF 100°C ON MOTOR. MOTOR MOUNTED ON A 14" X 14" X 3/4" ALUMINUM HEATSINK. THERMOSTAT IN STATOR WINDINGS WILL OPEN IF WINDING TEMPERATURE EXCEEDS 155°C. THIS ALLOWS FOR AN APPROXIMATE +10% HEADROOM IN THE CONTINUOUS TORQUE RATING BEFORE THERMOSTAT OPENS.

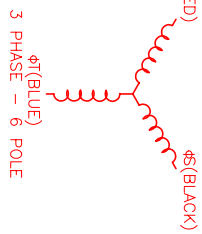
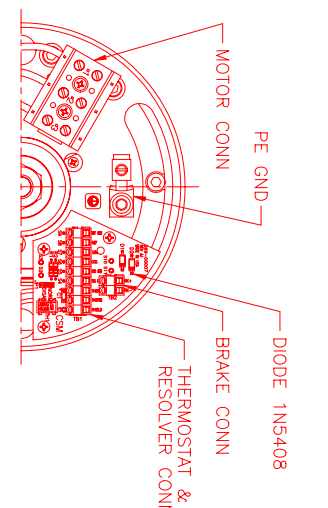
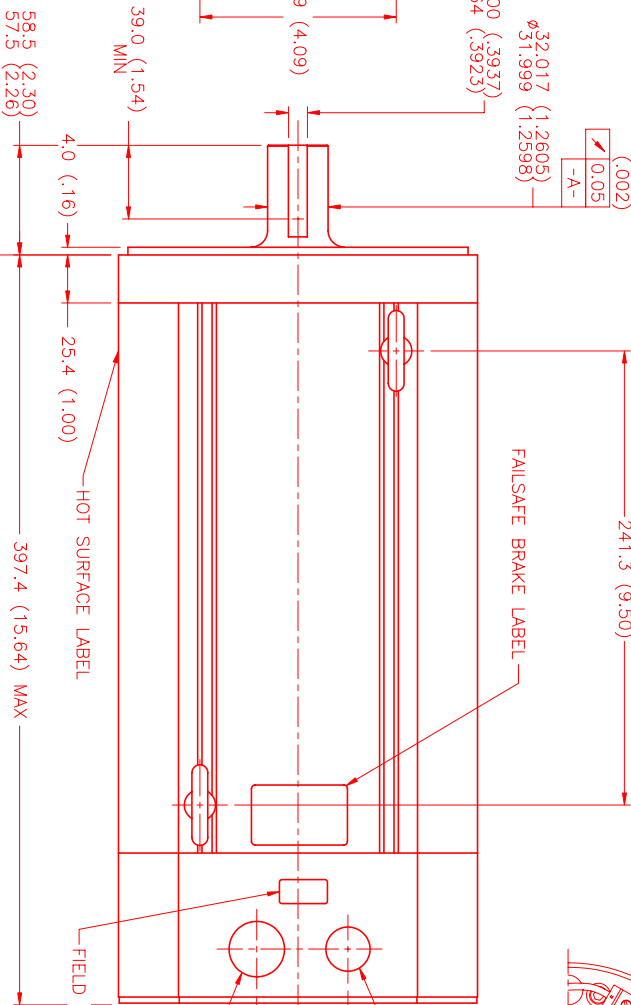
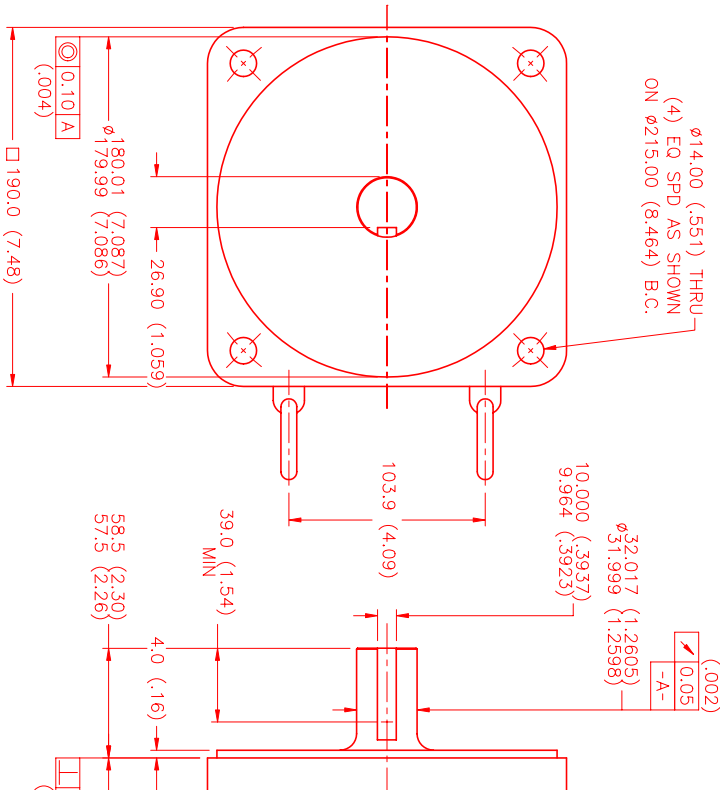
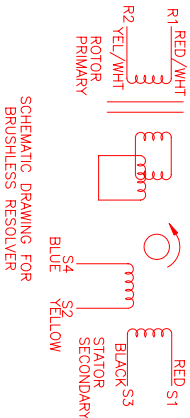
- MECHANICAL NOTES:**
- AXIAL LOAD: 100. LBS. MAX
 - RADIAL LOAD: 250 LBS. MAX @ 1" FROM FACE
 - MOTOR SEALED TO IP65.
 - MOTOR WEIGHT: 86 LBS. [39 kg]
 - MOTOR FINISH: BLACK EPOXY
 - MILLIMETERS (INCHES)

FAILSAFE BRAKE:
MIN. HOLDING TORQUE: 90 FT-LBS.
INPUT VOLTAGE: 24 VOLTS

CONNECTION CHART

MOTOR WIRE LEADS	WIRE FUNCTION	WIRE COLOR
1	ΦR	RED
2	ΦS	BLACK
3	ΦT	BLUE
-	PE_GND	GRN/YEL

RES/THERM/BRK WIRE LEADS	WIRE FUNCTION	WIRE COLOR
S11	BRK (+)	DIODE
S10	BRK (-)	1N5408
S9	REF_GND	YEL/WHT
S8	REF	RED/WHT
S7	SIN	YELLOW
S6	COS	RED
S5	COS_GND	BLACK
S4	SIN_GND	BLUE
S3	THERM	BLACK
S2	THERM	BLACK
S1	GND/SHLD	GRN/YEL



REV	DESCRIPTION	DATE	APP'D
A	PRELIMINARY	3/24/99	MVS
	E.C.O. - 577	6/14/00	AJS

NO.	PART NUMBER	DESCRIPTION	QTY
1	MPM1901ATG7G3R	3-Phase 230VAC 13.1HP Brushless Motor with Failsafe Brake	1

DATE: 3/24/99
DRAWN: MVS
CHECKED: MVS
APPROVED: MVS

SCALE: 1/2:1

MTS
Automation Division