

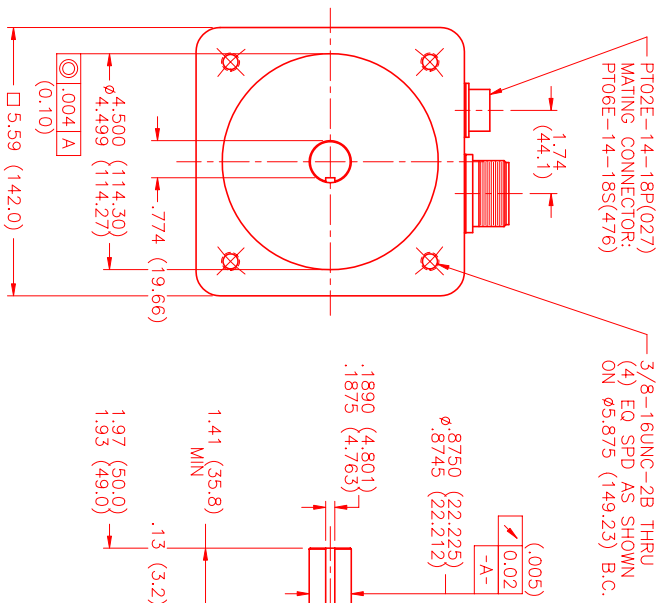
MOTOR DATA @ 230 VAC (SINE)

MOTOR PARAMETERS	UNITS	VALUE
MOTOR HORSEPOWER	HP RATED	6.8
	KW RATED	5.1
MAX. OPERATING SPEED	N. MAX RPM	2700
SPEED @ RATED TORQUE	N RATED RPM	2400
* CONTINUOUS RATED TORQUE @ 2400 RPM	IN-LBS[Nm]	179.0[20.2]
* CONTINUOUS STALL TORQUE	IN-LBS[Nm]	210.0[23.7]
CONTINUOUS LINE CURRENT	AMPS(RMS/φ)	18.7
PEAK TORQUE	IN-LBS[Nm]	630.0[70.8]
PEAK CURRENT	AMPS(RMS/φ)	56.3
MAX. THEORETICAL ACCEL.	RAD/SEC ²	33,511
TORQUE SENSITIVITY	Kt IN-LBS/AMPERE[RMS/φ]/MIN/AMPERE[RMS/φ]	11.21[1.26]
BACK EMF (LINE TO LINE)	Vrms/Krpm	70.0
D.C. RESISTANCE (P-P)	OHMS	.24
INDUCTANCE (P-P)	MILLIHENRIES	2.0
ROTOR INERTIA	Jm [IN-LBS-SEC ²] [Kg-M ²]	0.0188[0.00212]
STATIC FRICTION	Tf [IN-LBS] [Nm]	3.0[.34]

*25°C AMBIENT WITH A MAXIMUM CASE TEMPERATURE OF 100°C ON MOTOR. MOTOR MOUNTED ON A 1/2" X 1/2" X 1/2" ALUMINUM HEATSINK. THERMOSTAT IN STATOR WINDINGS WILL OPEN IF WINDING TEMPERATURE EXCEEDS 155°C. THIS ALLOWS FOR AN APPROXIMATE +10% HEADROOM IN THE CONTINUOUS TORQUE RATING BEFORE THERMOSTAT OPENS.

MECHANICAL NOTES:

- AXIAL LOAD: 50 LBS MAX
- RADIAL LOAD: 150 LBS MAX @ 1" FROM FACE
- MOTOR SEALED TO IP65.
- MOTOR WEIGHT: 48.8 LBS. [22.1 Kg]
- MOTOR FINISH: BLACK EPOXY
- MOTOR OUTPUT SHAFT: STAINLESS STEEL
- INCHES (MILLIMETERS)



CONNECTION CHART

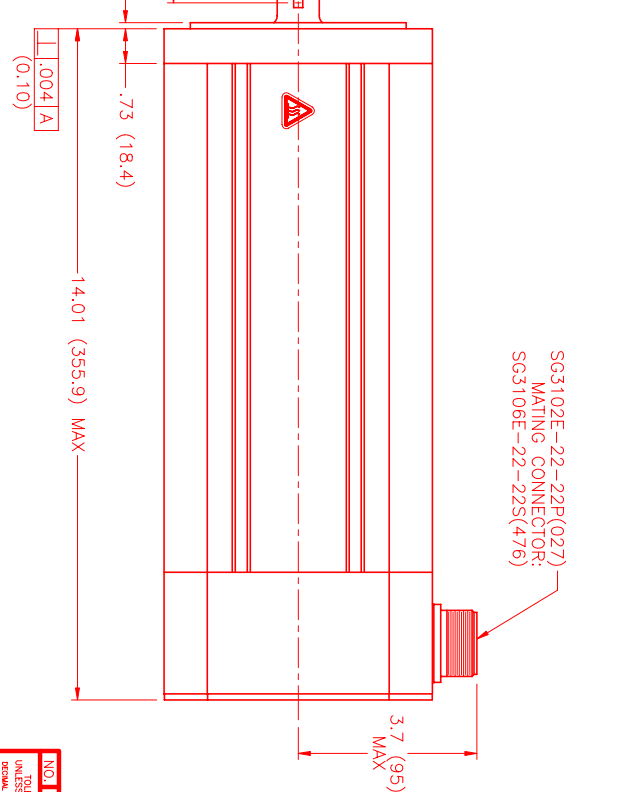
MOTOR CONNECTOR:
SG3102E-22-22P(027)
(270-00017)

MOTOR WIRE LEADS	WIRE FUNCTION	WIRE COLOR
A	φR	RED
B	φS	BLACK
C	φT	BLUE
D	PE GND	GRN/YEL

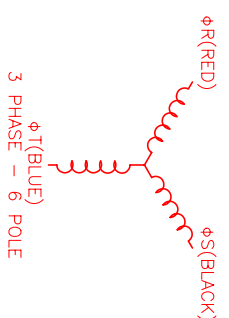
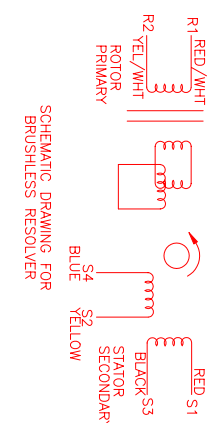
RESOLVER/THERM CONNECTOR:

PT02E-14-18P(027)
(270-00024)

RES/THERM WIRE LEADS	WIRE FUNCTION	WIRE COLOR
U	THERM	BLACK
N	THERM	BLACK
H	SIN	YELLOW
G	COS GND	BLACK
S	COS	RED
F	SIN GND	BLUE
R	REF GND	YEL/WHI
E	REF	RED/WHI
D	RES. SHLD	GRN/YEL
P	GND	GRN/YEL
A	-	-
B	-	-
C	-	-
J	-	-
K	-	-
L	-	-
M	-	-
T	-	-



SG3102E-22-22P(027)
MATING CONNECTOR:
SG3106E-22-22S(476)



REV.	DESCRIPTION	DATE	APP.
PRELIMINARY		2/23/00	LIN

NO.	PART NUMBER	DESCRIPTION	QTY.
1	SG3102E-22-22P(027)	MOTOR	1
2	SG3106E-22-22S(476)	MATING CONNECTOR	1

UNLESS SPECIFIED	DECIMAL ANGLES ± .005	FRONT VIEW
FRONT VIEW	± .002	RIGHT SIDE VIEW
DATE: 2/15/00	± 1/2°	TOP VIEW
DRAWN: MVS	± .001	REVISIONS
CHECKED:	± .0005	DATE: 2/15/00
APPROVED:	± .0002	TITLE: "A" TRAP / 230/ENG/RES/CONN
	± .0001	MATERIAL:
		DRAWING NUMBER: MPM1422ASGG61N
		SCALE: 1/2:1

MTS Automation Division
RESOLVER ASSEMBLY FOR AUTOMATION RESOLUTION IN THE PERFORMANCE OF WELDING TO OTHER PROCESSES AS REQUIRED BY CUSTOMER SPECIFICATIONS. THIS DRAWING IS THE PROPERTY OF MTS AUTOMATION. IT IS TO BE USED ONLY FOR THE SPECIFIC APPLICATION AND FOR THE SPECIFIC CUSTOMER. IT IS NOT TO BE REPRODUCED OR COPIED IN ANY MANNER WITHOUT THE WRITTEN PERMISSION OF MTS AUTOMATION.