

### MOTOR DATA @ 230 VAC (TRAP)

MOTOR PARAMETERS	UNITS	VALUE
HORSEPOWER	HP	2.9
KILOWATTS	KW	2.1
MAX. OPERATING SPEED	N MAX RPM	1750
SPEED @ RATED TORQUE	N RATED RPM	1500
* CONTINUOUS RATED TORQUE @ 2400 RPM	IN-LBS[Nm]	120.0[13.5]
* CONTINUOUS STALL TORQUE	IN-LBS[Nm]	130.0[14.7]
CONTINUOUS LINE CURRENT	AMPS	9.8
PEAK TORQUE	IN-LBS[Nm]	390.0[43.9]
PEAK CURRENT	AMPS	29.6
MAX. THEORETICAL ACCEL.	RAD/SEC <sup>2</sup>	36,792
TORQUE SENSITIVITY	Kt [IN-LBS/AMP][Nm/AMP]	12.9[1.5]
BACK EMF (LINE TO LINE)	Vrms/Krpm	115.0
D.C. RESISTANCE (P-P)	OHMS	1.7
INDUCTANCE (P-P)	MILLIHENRIES	12.6
ROTOR INERTIA	Jm [IN-LBS-SEC <sup>2</sup> ][Kg-M <sup>2</sup> ]	.0106[.00119]
STATIC FRICTION	Tf [IN-LBS][Nm]	2.4[0.27]

\*25°C AMBIENT WITH A MAXIMUM CASE TEMPERATURE OF 100°C ON MOTOR. MOTOR MOUNTED ON A 12" X 12" X 1/2" ALUMINUM HEATSINK. THERMOSTAT IN STATOR WINDINGS WILL OPEN IF WINDING TEMPERATURE EXCEEDS 155°C. THIS ALLOWS FOR AN APPROXIMATE +10% HEADROOM IN THE CONTINUOUS TORQUE RATING BEFORE THERMOSTAT OPENS.

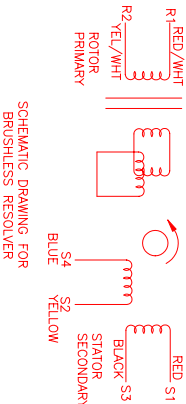
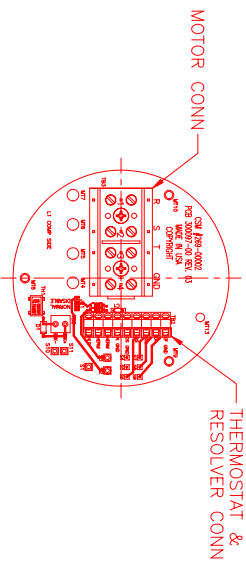
#### MECHANICAL NOTES:

- AXIAL LOAD: 50 LBS MAX
- RADIAL LOAD: 150 LBS MAX @ 1" FROM FACE
- MOTOR SEALED TO IP65.
- MOTOR WEIGHT: 36 LBS. [ 16.3 kg]
- MOTOR FINISH: BLACK EPOXY
- MOTOR OUTPUT SHAFT: STAINLESS STEEL
- MILLIMETERS (INCHES)

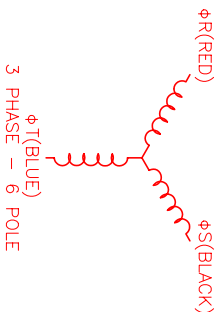
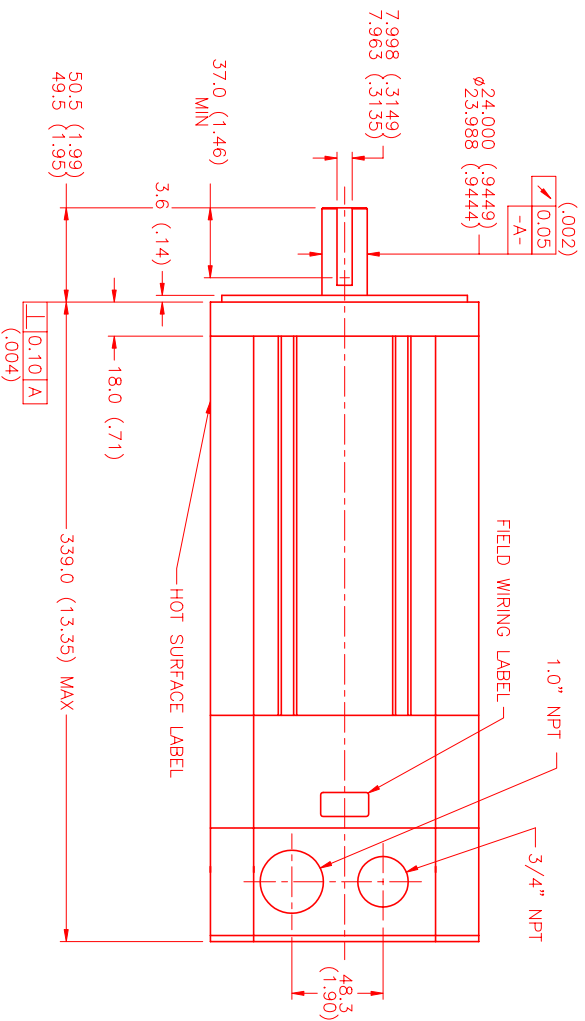
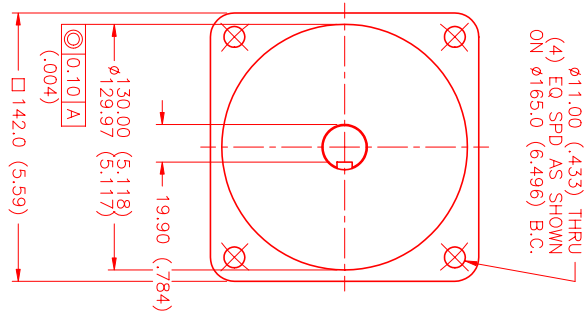
### CONNECTION CHART

MOTOR WIRE LEADS	WIRE FUNCTION	WIRE COLOR
1	ΦS	RED
2	ΦT	BLUE
3	PE GND	GRN/YEL

RES/THERM WIRE LEADS	WIRE FUNCTION	WIRE COLOR
S1	RES SHLD	GRN/YEL
S2	THERM	BLACK
S3	THERM	BLACK
S4	SIN GND	BLUE
S5	COS GND	BLACK
S6	COS	RED
S7	SIN	YELLOW
S8	REF	RED/WHI
S9	REF GND	YEL/WHI



SCHEMATIC DRAWING FOR BRUSHLESS RESOLVER



3 PHASE - 6 POLE

NO.	PART NUMBER	DESCRIPTION	QTY.
1	MPM1421BTG7G3N	Brushless Resolver	1

REV.	DESCRIPTION	DATE	APP.
PRELIMINARY		6/15/00	LIN

UNLESS SPECIFIED	DESCRIPTION
DRINKING WATER	304 STAINLESS STEEL
WELDING	TIG WELD
FINISH	BLACK EPOXY
ANGLE	1/2"
SCALE	1/2"
DATE	8/3/99
DESIGNED BY	MVS
CHECKED BY	MVS
APPROVED BY	MVS
MATERIAL	304 STAINLESS STEEL
FINISH	BLACK EPOXY
SCALE	1/2"

NO.	PART NUMBER	DESCRIPTION	QTY.
1	MPM1421BTG7G3N	Brushless Resolver	1

REV.	DESCRIPTION	DATE	APP.
PRELIMINARY		6/15/00	LIN

UNLESS SPECIFIED	DESCRIPTION
DRINKING WATER	304 STAINLESS STEEL
WELDING	TIG WELD
FINISH	BLACK EPOXY
ANGLE	1/2"
SCALE	1/2"
DATE	8/3/99
DESIGNED BY	MVS
CHECKED BY	MVS
APPROVED BY	MVS
MATERIAL	304 STAINLESS STEEL
FINISH	BLACK EPOXY
SCALE	1/2"

NO.	PART NUMBER	DESCRIPTION	QTY.
1	MPM1421BTG7G3N	Brushless Resolver	1

REV.	DESCRIPTION	DATE	APP.
PRELIMINARY		6/15/00	LIN

UNLESS SPECIFIED	DESCRIPTION
DRINKING WATER	304 STAINLESS STEEL
WELDING	TIG WELD
FINISH	BLACK EPOXY
ANGLE	1/2"
SCALE	1/2"
DATE	8/3/99
DESIGNED BY	MVS
CHECKED BY	MVS
APPROVED BY	MVS
MATERIAL	304 STAINLESS STEEL
FINISH	BLACK EPOXY
SCALE	1/2"

NO.	PART NUMBER	DESCRIPTION	QTY.
1	MPM1421BTG7G3N	Brushless Resolver	1

REV.	DESCRIPTION	DATE	APP.
PRELIMINARY		6/15/00	LIN

UNLESS SPECIFIED	DESCRIPTION
DRINKING WATER	304 STAINLESS STEEL
WELDING	TIG WELD
FINISH	BLACK EPOXY
ANGLE	1/2"
SCALE	1/2"
DATE	8/3/99
DESIGNED BY	MVS
CHECKED BY	MVS
APPROVED BY	MVS
MATERIAL	304 STAINLESS STEEL
FINISH	BLACK EPOXY
SCALE	1/2"

NO.	PART NUMBER	DESCRIPTION	QTY.
1	MPM1421BTG7G3N	Brushless Resolver	1

REV.	DESCRIPTION	DATE	APP.
PRELIMINARY		6/15/00	LIN

UNLESS SPECIFIED	DESCRIPTION
DRINKING WATER	304 STAINLESS STEEL
WELDING	TIG WELD
FINISH	BLACK EPOXY
ANGLE	1/2"
SCALE	1/2"
DATE	8/3/99
DESIGNED BY	MVS
CHECKED BY	MVS
APPROVED BY	MVS
MATERIAL	304 STAINLESS STEEL
FINISH	BLACK EPOXY
SCALE	1/2"

NO.	PART NUMBER	DESCRIPTION	QTY.
1	MPM1421BTG7G3N	Brushless Resolver	1

REV.	DESCRIPTION	DATE	APP.
PRELIMINARY		6/15/00	LIN

UNLESS SPECIFIED	DESCRIPTION
DRINKING WATER	304 STAINLESS STEEL
WELDING	TIG WELD
FINISH	BLACK EPOXY
ANGLE	1/2"
SCALE	1/2"
DATE	8/3/99
DESIGNED BY	MVS
CHECKED BY	MVS
APPROVED BY	MVS
MATERIAL	304 STAINLESS STEEL
FINISH	BLACK EPOXY
SCALE	1/2"

NO.	PART NUMBER	DESCRIPTION	QTY.
1	MPM1421BTG7G3N	Brushless Resolver	1

REV.	DESCRIPTION	DATE	APP.
PRELIMINARY		6/15/00	LIN

UNLESS SPECIFIED	DESCRIPTION
DRINKING WATER	304 STAINLESS STEEL
WELDING	TIG WELD
FINISH	BLACK EPOXY
ANGLE	1/2"
SCALE	1/2"
DATE	8/3/99
DESIGNED BY	MVS
CHECKED BY	MVS
APPROVED BY	MVS
MATERIAL	304 STAINLESS STEEL
FINISH	BLACK EPOXY
SCALE	1/2"

NO.	PART NUMBER	DESCRIPTION	QTY.
1	MPM1421BTG7G3N	Brushless Resolver	1

REV.	DESCRIPTION	DATE	APP.
PRELIMINARY		6/15/00	LIN

UNLESS SPECIFIED	DESCRIPTION
DRINKING WATER	304 STAINLESS STEEL
WELDING	TIG WELD
FINISH	BLACK EPOXY
ANGLE	1/2"
SCALE	1/2"
DATE	8/3/99
DESIGNED BY	MVS
CHECKED BY	MVS
APPROVED BY	MVS
MATERIAL	304 STAINLESS STEEL
FINISH	BLACK EPOXY
SCALE	1/2"

NO.	PART NUMBER	DESCRIPTION	QTY.
1	MPM1421BTG7G3N	Brushless Resolver	1

REV.	DESCRIPTION	DATE	APP.
PRELIMINARY		6/15/00	LIN

UNLESS SPECIFIED	DESCRIPTION
DRINKING WATER	304 STAINLESS STEEL
WELDING	TIG WELD
FINISH	BLACK EPOXY
ANGLE	1/2"
SCALE	1/2"
DATE	8/3/99
DESIGNED BY	MVS
CHECKED BY	MVS
APPROVED BY	MVS
MATERIAL	304 STAINLESS STEEL
FINISH	BLACK EPOXY
SCALE	1/2"

NO.	PART NUMBER	DESCRIPTION	QTY.
1	MPM1421BTG7G3N	Brushless Resolver	1

REV.	DESCRIPTION	DATE	APP.
PRELIMINARY		6/15/00	LIN

UNLESS SPECIFIED	DESCRIPTION
DRINKING WATER	304 STAINLESS STEEL
WELDING	TIG WELD
FINISH	BLACK EPOXY
ANGLE	1/2"
SCALE	1/2"
DATE	8/3/99
DESIGNED BY	MVS
CHECKED BY	MVS
APPROVED BY	MVS
MATERIAL	304 STAINLESS STEEL
FINISH	BLACK EPOXY
SCALE	1/2"

NO.	PART NUMBER	DESCRIPTION	QTY.
1	MPM1421BTG7G3N	Brushless Resolver	1

REV.	DESCRIPTION	DATE	APP.
PRELIMINARY		6/15/00	LIN

UNLESS SPECIFIED	DESCRIPTION
DRINKING WATER	304 STAINLESS STEEL
WELDING	TIG WELD
FINISH	BLACK EPOXY
ANGLE	1/2"
SCALE	1/2"
DATE	8/3/99
DESIGNED BY	MVS
CHECKED BY	MVS
APPROVED BY	MVS
MATERIAL	304 STAINLESS STEEL
FINISH	BLACK EPOXY
SCALE	1/2"

NO.	PART NUMBER	DESCRIPTION	QTY.
1	MPM1421BTG7G3N	Brushless Resolver	1

REV.	DESCRIPTION	DATE	APP.
PRELIMINARY		6/15/00	LIN

UNLESS SPECIFIED	DESCRIPTION
DRINKING WATER	304 STAINLESS STEEL
WELDING	TIG WELD
FINISH	BLACK EPOXY
ANGLE	1/2"
SCALE	1/2"
DATE	8/3/99
DESIGNED BY	MVS
CHECKED BY	MVS
APPROVED BY	MVS
MATERIAL	304 STAINLESS STEEL
FINISH	BLACK EPOXY
SCALE	1/2"

NO.	PART NUMBER	DESCRIPTION	QTY.
1	MPM1421BTG7G3N	Brushless Resolver	1

REV.	DESCRIPTION	DATE	APP.
PRELIMINARY		6/15/00	LIN

UNLESS SPECIFIED	DESCRIPTION
DRINKING WATER	304 STAINLESS STEEL
WELDING	TIG WELD
FINISH	BLACK EPOXY
ANGLE	1/2"
SCALE	1/2"
DATE	8/3/99
DESIGNED BY	MVS
CHECKED BY	MVS
APPROVED BY	MVS
MATERIAL	304 STAINLESS STEEL
FINISH	BLACK EPOXY
SCALE	1/2"

NO.	PART NUMBER	DESCRIPTION	QTY.
1	MPM1421BTG7G3N	Brushless Resolver	1

REV.	DESCRIPTION	DATE	APP.
PRELIMINARY		6/15/00	LIN

UNLESS SPECIFIED	DESCRIPTION
DRINKING WATER	304 STAINLESS STEEL
WELDING	TIG WELD
FINISH	BLACK EPOXY
ANGLE	1/2"
SCALE	1/2"
DATE	8/3/99
DESIGNED BY	MVS
CHECKED BY	MVS
APPROVED BY	MVS
MATERIAL	304 STAINLESS STEEL
FINISH	BLACK EPOXY
SCALE	1/2"

NO.	PART NUMBER	DESCRIPTION	QTY.
1	MPM1421BTG7G3N	Brushless Resolver	1

REV.	DESCRIPTION	DATE	APP.
PRELIMINARY		6/15/00	LIN

UNLESS SPECIFIED	DESCRIPTION
DRINKING WATER	304 STAINLESS STEEL
WELDING	TIG WELD
FINISH	BLACK EPOXY
ANGLE	1/2"
SCALE	1/2"
DATE	8/3/99
DESIGNED BY	MVS
CHECKED BY	MVS
APPROVED BY	MVS
MATERIAL	304 STAINLESS STEEL
FINISH	BLACK EPOXY
SCALE	1/2"

NO.	PART NUMBER	DESCRIPTION	QTY.
1	MPM1421BTG7G3N	Brushless Resolver	1

REV.	DESCRIPTION	DATE	APP.
PRELIMINARY			