

### MOTOR DATA @ 230 VAC (TRAP)

MOTOR PARAMETERS	UNITS	VALUE
HORSEPOWER	HP	4.4
KILOWATTS	KW	3.3
MAX. OPERATING SPEED	N MAX RPM	2700
SPEED @ RATED TORQUE	N RATED RPM	2400
* CONTINUOUS RATED TORQUE @ 2400 RPM	IN-LBS[Nm]	115.0[13.0]
* CONTINUOUS STALL TORQUE	IN-LBS[Nm]	130.0[14.7]
CONTINUOUS LINE CURRENT	AMPS	16.0
PEAK TORQUE	IN-LBS[Nm]	390.0[43.9]
PEAK CURRENT	AMPS	48.0
MAX. THEORETICAL ACCEL.	RAD/SEC <sup>2</sup>	30,233
TORQUE SENSITIVITY	Kt [IN-LBS/AMP][Nm/AMP]	8.1.9[1]
BACK EMF (LINE TO LINE)	Vrms/Krpm	70.0
D.C. RESISTANCE (P-P)	OHMS	.66
INDUCTANCE (P-P)	MILLIHENRIES	4.7
ROTOR INERTIA W./BRAKE	Jm [IN-LBS-SEC <sup>2</sup> ][Kg-M <sup>2</sup> ]	.0129[.00145]
STATIC FRICTION	Tf [IN-LBS][Nm]	2.4[0.27]

### CONNECTION CHART

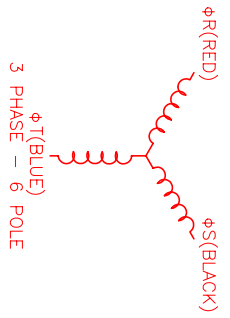
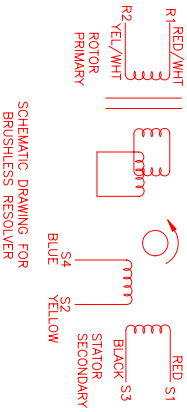
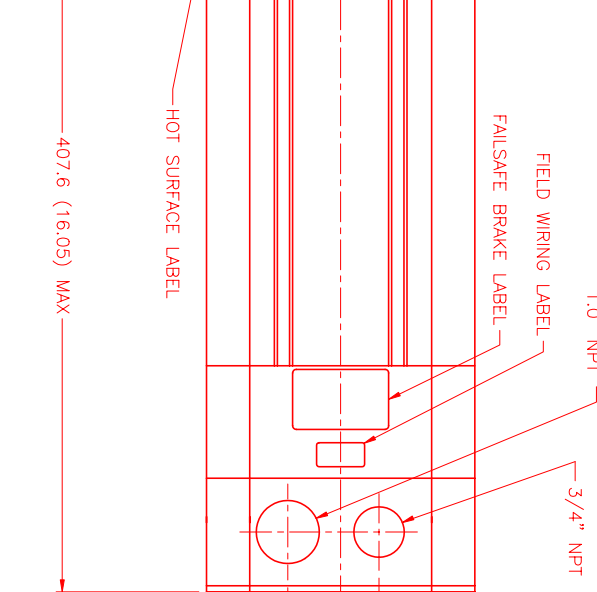
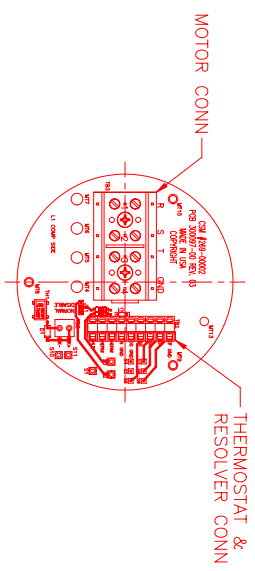
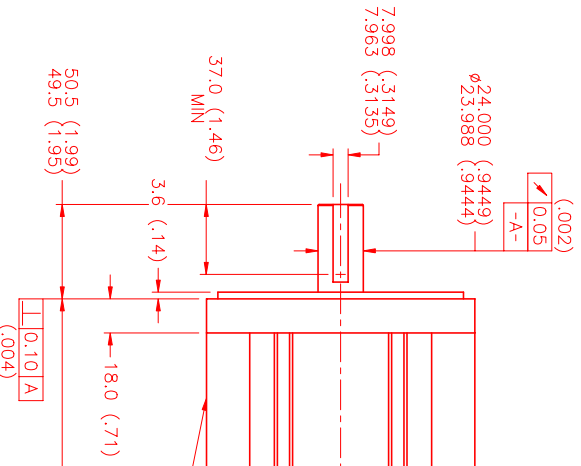
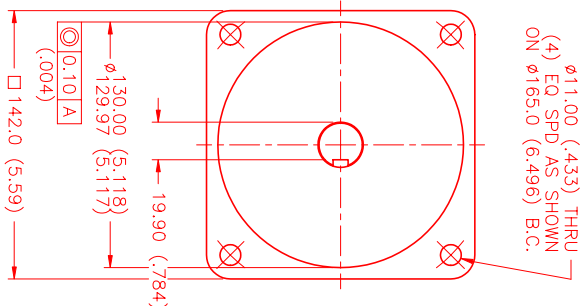
MOTOR WIRE LEADS	WIRE FUNCTION	WIRE COLOR
1	ΦS	BLACK
2	ΦT	BLUE
3	ΦE GND	GRN/YEL
4	PE GND	

RES/THERM/BRAKE WIRE LEADS	TERMINAL	WIRE FUNCTION	WIRE COLOR
S11	BRAKE (+)	DIODE	
S10	BRAKE (-)	IN4007	
S9	REF. GND	YEL/WHITE	
S8	REF.	RED/WHITE	
S7	SIN	YELLOW	
S6	COS	RED	
S5	COS GND	BLACK	
S4	SIN GND	BLUE	
S3	THERM	BLACK	
S2	THERM	BLACK	
S1	GND/SHIELD	GREEN	

\*25°C AMBIENT WITH A MAXIMUM CASE TEMPERATURE OF 100°C ON MOTOR. MOTOR MOUNTED ON A 12" X 12" X 1/2" ALUMINUM HEATSINK. THERMOSTAT IN STATOR WINDINGS WILL OPEN IF WINDING TEMPERATURE EXCEEDS 155°C. THIS ALLOWS FOR AN APPROXIMATE +10% HEADROOM IN THE CONTINUOUS TORQUE RATING BEFORE THERMOSTAT OPENS.

#### MECHANICAL NOTES:

1. AXIAL LOAD: 50 LBS MAX
2. RADIAL LOAD: 150 LBS MAX @ 1" FROM FACE
3. MOTOR SEALED TO IP65.
4. MOTOR WEIGHT: 47 LBS. [ 21.3 Kg]
5. MOTOR FINISH: BLACK EPOXY
6. MOTOR OUTPUT SHAFT: STAINLESS STEEL
7. MILLIMETERS (INCHES)



NO. 1	PART NUMBER	DESCRIPTION	QTY.
UNLESS SPECIFIED			
DECIMAL: .005 & .006	MITS Automation Division		
FRACTIONAL: 1/32, 1/16, 1/8, 1/4, 1/2	MITS Automation Division		
ANGLE: 1/2°	MITS Automation Division		
DATE: 8/4/99	TITLE: "A" /TRAP /230/MET/RES/NPT/BRK		
DRAWN: MVS	MATERIAL:		
CHECKED:	APPROVED:		
	MPM1421ATG7G3R	SCALE: 1/2-1	

REV. 1	DESCRIPTION	DATE	APP.
PRELIMINARY		1/28/00	LIN

FORM 1  
 \* /TRAP /230/MET/RES/NET/BRK  
 DRAWING NUMBER: MPM1421ATG7G3R