

MOTOR DATA @ 460 VAC (TRAP)

MOTOR PARAMETERS	UNITS	VALUE
MOTOR HORSEPOWER	HP RATED	2.4
	KW RATED	1.8
MAX OPERATING SPEED	N MAX	2100
SPEED @ RATED TORQUE	RPM	1500
* CONTINUOUS RATED TORQUE @ 1500 RPM	N-LEBS [Nm]	104 Q 111.7
* CONTINUOUS STALL TORQUE	N-LEBS [Nm]	116.2 13.11
CONTINUOUS LINE CURRENT	AMPS	4.7
PEAK TORQUE	N-LEBS [Nm]	408.7 45.7
PEAK CURRENT	AMPS	16.4
MAX THEORETICAL ACCEL	RAD/SEC ²	41.081
TORQUE SENSITIVITY	Kt [N-LEBS/AMP/Nm/AMPI]	24.812 841
BACK EMF (LINE TO LINE)	Vrms/Krpm	230.0
D.C. RESISTANCE (P-P)	OHMS	3.9
INDUCTANCE (P-P)	MILLIHENRIES	29.6
ROTOR INERTIA W/BRAKE	Jm [N-LEBS-SEC ² Kg-M ²]	.00981 001121
STATIC FRICTION	Tf [N-LEBS [Nm]	1.810 2

*25°C AMBIENT WITH A MAXIMUM CASE TEMPERATURE OF 100°C ON MOTOR. MOTOR MOUNTED ON A 12" X 12" X 1/2" ALUMINUM HEATSINK. THERMOSTAT IN STATOR WINDINGS WILL OPEN IF WINDING TEMPERATURE EXCEEDS 155°C. THIS ALLOWS FOR AN APPROXIMATE +10% HEADROOM IN THE CONTINUOUS TORQUE RATING BEFORE THERMOSTAT OPENS.

MECHANICAL NOTES:

- AXIAL LEADS: 50 LBS MAX
- RADIAL LOAD: 100 LBS MAX @ 1" FROM FACE
- MOTOR SEALED TO IP65,
- MOTOR WEIGHT: 40.6 LBS [18.4 Kg]
- MOTOR FINISH: BLACK EPOXY
- MOTOR OUTPUT SHAFT: STAINLESS STEEL
- MILLIMETERS (INCHES)

ENCODER: (290-D0052)
OH48-2000P6-L6-SV
FAILURE BRAKE:
MIN HOLDING TORQUE: 240 IN-LBS
INPUT VOLTAGE: 24 VOLTS

CONNECTION CHART

MOTOR/BRAKE CONNECTOR:
PT02E-16-8P(027)

(270-00032)

MOTOR/BRAKE	WIRE LEADS
PIN	WIRE FUNCTION
A	4R BRK
B	4S
C	4T
D	PE GND
E	BRK SHLD
F	BRK (+)
G	BRK (-)
H	-

ENCODER/THERM CONNECTOR:
PT02E-14-18P(027)

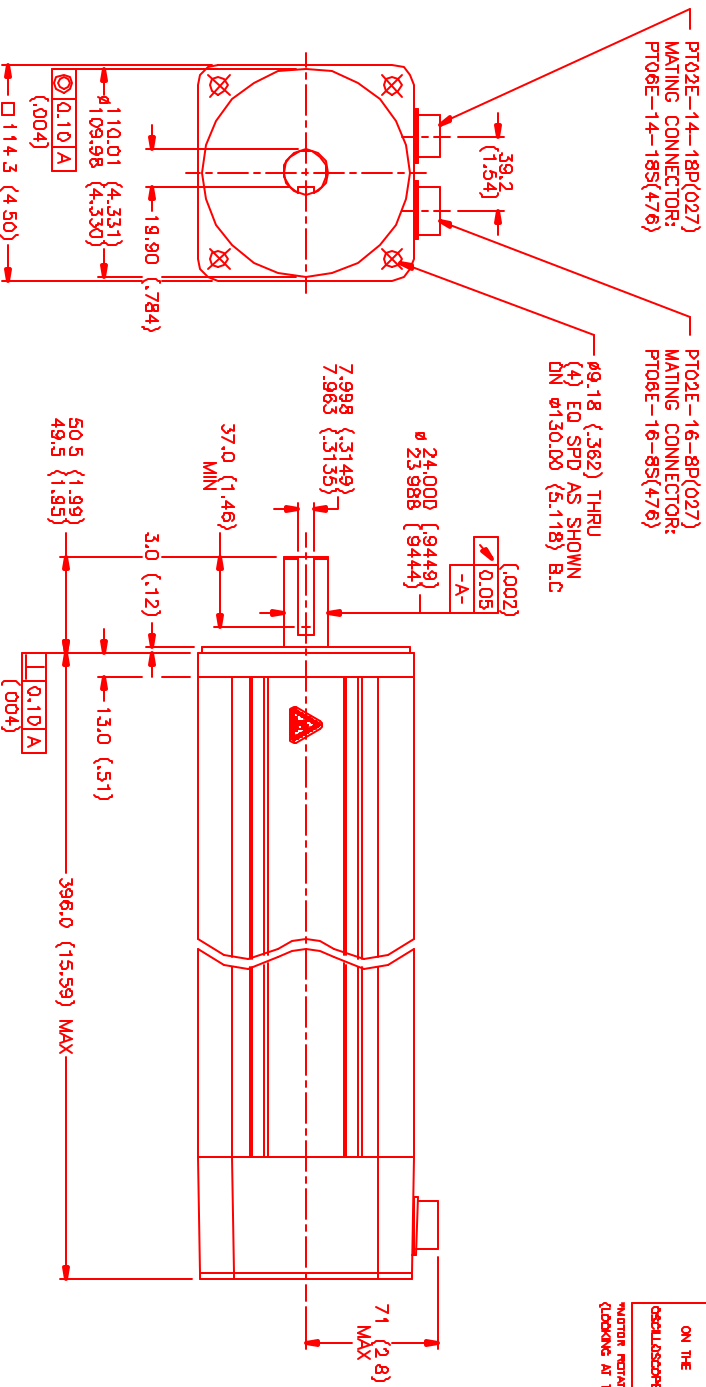
(270-00024)

ENC/THERM	WIRE LEADS
PIN	WIRE FUNCTION
T	GROUND
K	+5VDC
B	CH A
C	CH A
N	CH B
P	CH B
M	CH Z
U	CH Z
E	CH U
R	CH V
F	CH V
S	CH W
G	CH W
H	CH W
D	GND/CABLE SHLD
A	THERM
L	THERM
J	GND

MOTOR & HALL POSITION CHART

HALL LEADS	BROWN	GRAY	WHITE
MOTOR LEADS	BLACK (connect to RED)	RED (connect to BLUE)	BLUE (connect to BLACK)

MOTOR ROTATION (CW (COUNTER CLOCKWISE) (LOOKING AT THE FACE OF THE MOTOR))
WAVE REPRESENTING STATOR OUTPUT
WAVE REPRESENTING HALL SENSOR



NO.	PART NUMBER	DESCRIPTION	QTY.
1	MPS Systems Corporation Automation Division		
DATE	7/20/89	TITLE	TRAP/460/MET/TZ/CONN/BRK
DESIGNED		DRAWN	
APPROVED		REV	

REV.	DESCRIPTION	DATE	APP.
PRELIMINARY		10/24/01	LIN