

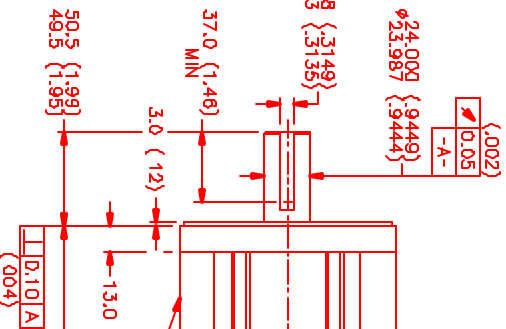
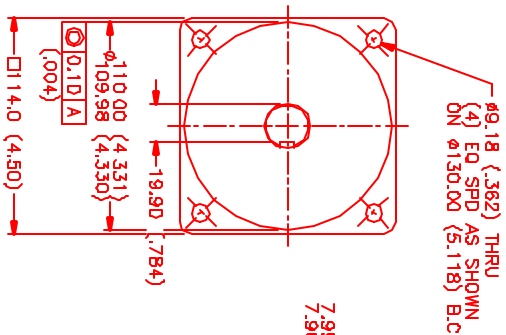
### MOTOR DATA @ 460 VAC (TRAP)

MOTOR PARAMETERS	UNITS	VALUE
MOTOR HORSEPOWER	HP RATED	2.4
KILOWATTS	KW RATED	1.8
MAX OPERATING SPEED	N MAX	2100
SPEED @ RATED TORQUE	RPM	1500
* CONTINUOUS RATED TORQUE @ 1500 RPM	IN-LBS [Nm]	104.0 [11.7]
* CONTINUOUS STALL TORQUE	IN-LBS [Nm]	116.2 [13.1]
CONTINUOUS LINE CURRENT	AMPS	4.7
PEAK CURRENT	IN-LBS [Nm]	406.7 [46.7]
MAX THEORETICAL ACCEL	AMPS	16.4
TORQUE SENSITIVITY	RD/SEC <sup>2</sup>	42.811
BACK EMF (LINE TO LINE)	Kt [IN-LBS/AMP/Min/AMPI]	24.8 [2.84]
D.C. RESISTANCE (P-P)	Vrms/Krpm	220.0
INDUCTANCE (P-P)	OHMS	3.9
ROTOR INERTIA	J [IN-LBS-SEC <sup>2</sup> /KG-M <sup>2</sup> ]	29.6
STATIC FRICTION	IN-LBS [Nm]	0.0085 [0.001071]

\*25°C AMBIENT WITH A MAXIMUM CASE TEMPERATURE OF 100°C ON MOTOR. MOTOR MOUNTED ON A 12" X 12" X 12" ALUMINUM HEATSINK. THERMOSTAT IN STATOR WINDINGS WILL OPEN IF WINDING TEMPERATURE EXCEEDS 155°C. THIS ALLOWS FOR AN APPROXIMATE +10% HEADROOM IN THE CONTINUOUS TORQUE RATING BEFORE THERMOSTAT OPENS.

#### MECHANICAL NOTES:

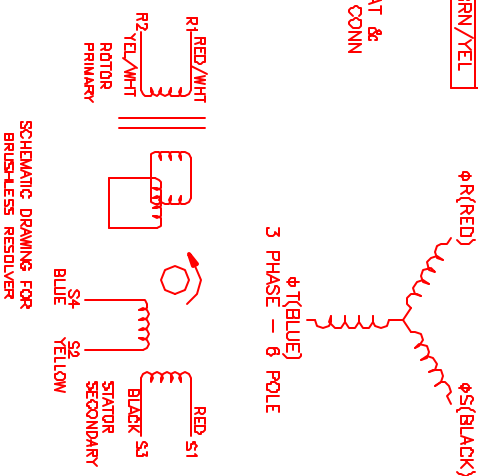
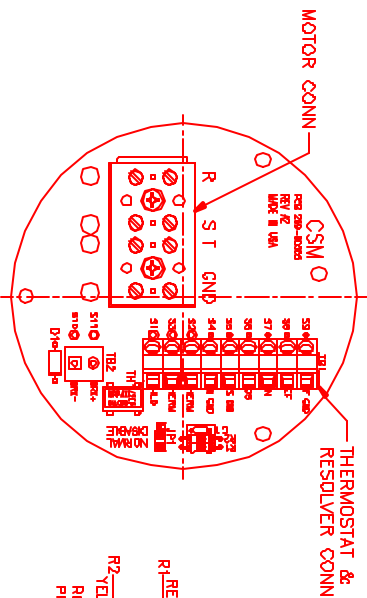
- AXIAL LOAD: 50 LBS MAX
- RADIAL LOAD: 100 LBS MAX @ 1" FROM FACE
- MOTOR SEALED TO IP65.
- MOTOR WEIGHT: 37 LBS [16.8 Kg]
- MOTOR FINISH: BLACK EPOXY
- MOTOR OUTPUT SHAFT: STAINLESS STEEL
- MILLIMETERS (INCHES)



### CONNECTION CHART

MOTOR WIRE LEADS	WIRE FUNCTION	WIRE COLOR
1	ΦR	RED
2	ΦS	BLACK
3	ΦT	BLUE
4	PE GND	GRN/YEL

RES/THERM WIRE LEADS	WIRE FUNCTION	WIRE COLOR
S9	REF GND	YEL/WHI
S8	REF	RED/WHI
S7	SIN	YELLOW
S6	COS	RED
S5	COS GND	BLACK
S4	SIN GND	BLUE
S3	THERM	BLACK
S2	THERM	BLACK
S1	RES SHLD	GRN/YEL



SCHEMATIC DRAWING FOR BRUSHLESS RESOLVER

### REVISIONS

REV	DESCRIPTION	DATE	APP'D.
1	PRELIMINARY	6/24/09	MS

NO.	PART NUMBER	DESCRIPTION	QTY.
1	MPM11430TJ7G3N	MPS Systems Corporation Automation Division	1

DATE: 6/24/09  
TITLE: DP/TRAP/460/NET/RES/NPT  
DRAWN: MPM11430TJ7G3N  
REV: 1/2/1