

MOTOR DATA @ 230 VAC (TRAP)

MOTOR PARAMETERS	UNITS	VALUE
MOTOR HORSEPOWER	HP RATED	3.3
	KW RATED	2.5
MAX. OPERATING SPEED	N MAX	4200
SPEED @ RATED TORQUE	N RATED	3000
* CONTINUOUS RATED TORQUE	IN-LBS[Nm]	69 [17.8]
* CONTINUOUS STALL TORQUE	IN-LBS[Nm]	83.0 [19.3]
CONTINUOUS LINE CURRENT	AMPS	13.4
PEAK TORQUE	IN-LBS[Nm]	290.5 [32.7]
MAX. THEORETICAL ACCEL	AMPS	46.8
TORQUE SENSITIVITY	RAD/SEC ²	44.015
BACK EMF (LINE TO LINE)	Vrms/AMPI[Nm/AMP]	6.21.711
D.C. RESISTANCE (P-P)	OHMS	.40
INDUCTANCE (P-P)	MILLIHENRIES	2.8
ROTOR INERTIA	Jm	.000681.000741
STATIC FRICTION	IN-LBS[Sec ²]/Kg-M ²	1.41.181

CONNECTION CHART

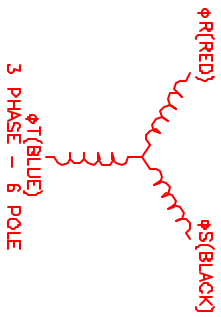
MOTOR CONNECTOR:
PT02E-14-5P(027)
(270-00026)

MOTOR WIRE LEADS	WIRE COLOR
A	RED
B	BLACK
C	BLUE
D	GRN/YEL
E	-

ENCODER/THERM CONNECTOR:

PT02E-14-18P(027)
(270-00024)

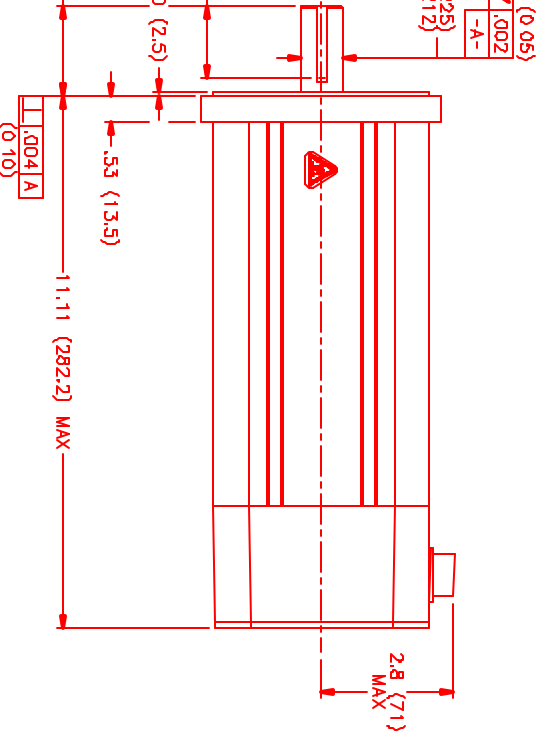
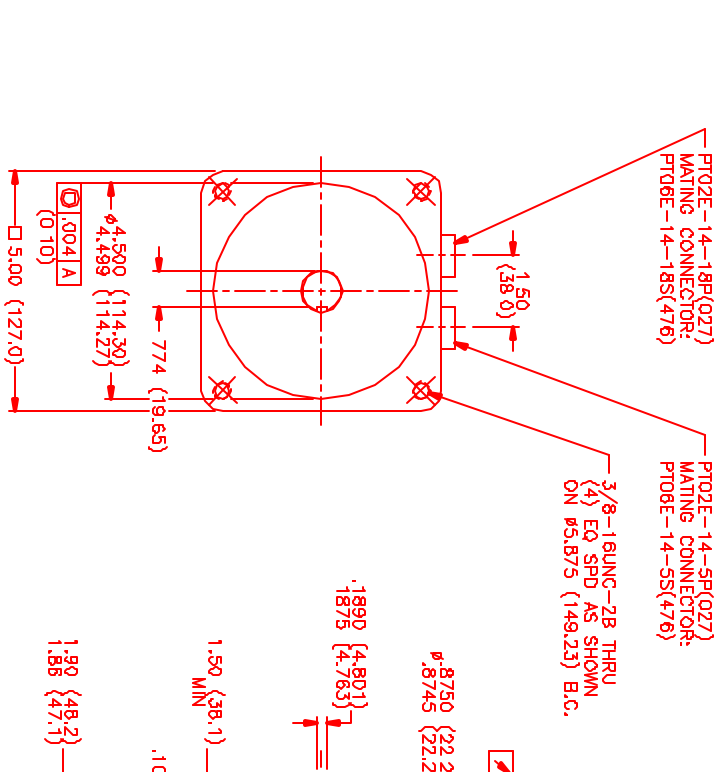
ENC/THERM WIRE LEADS	WIRE COLOR
T	GROUND
K	+5VDC
B	CH A
C	CH A
N	CH B
P	CH B
M	CH Z
U	CH Z
E	CH U
R	CH U
F	CH V
S	CH V
G	CH W
H	CH W
D	GND/CABLE SHLD
A	THERM
L	THERM
J	GND



MOTOR & HALL POSITION CHART

HALL LEADS	BROWN	GRAY	WHITE
MOTOR LEADS	BLACK (connect to RED)	RED (connect to BLUE)	BLUE (connect to BLACK)

*MOTOR ROTATION CCW (COUNTER CLOCKWISE)
(LOOKING AT THE FACE OF THE MOTOR)
VAVE REPRESENTING STATOR OUTPUT
VAVE REPRESENTING HALL SENSOR



NO.	PART NUMBER	DESCRIPTION	QTY.
1	142ATG6UZ1N	MNS Systems Corporation Automation Division	1
2	142ATG6UZ1N	ENCODER/THERM CONNECTOR	1
3	142ATG6UZ1N	MOTOR	1

REV.	REVISIONS	DATE	APP'D.
1	ISSUE FOR PRODUCTION	10/13/00	AJS
PRELIMINARY			