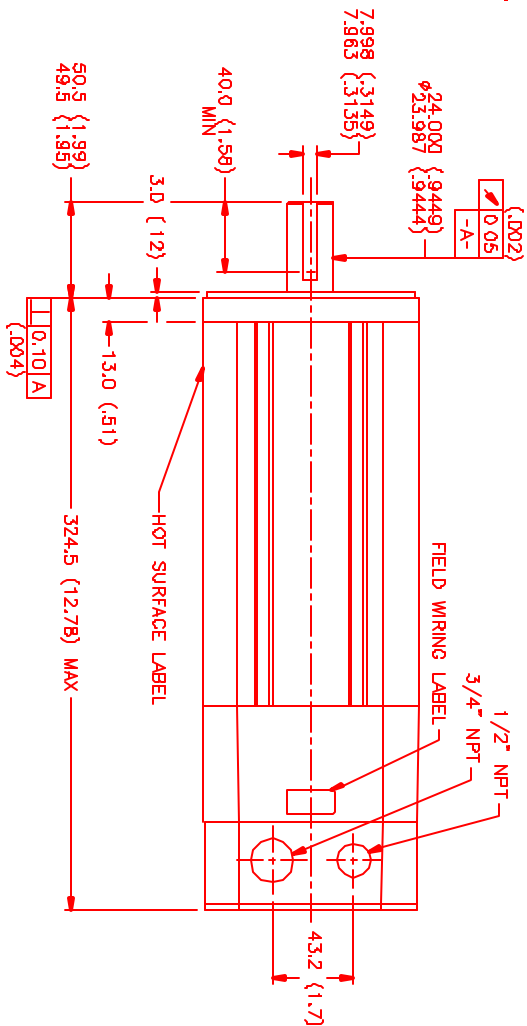
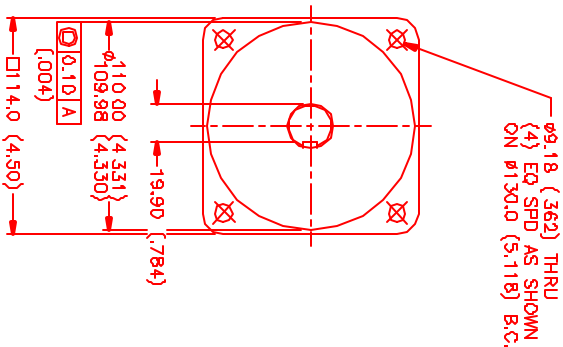


**MOTOR DATA @ 230 VAC (SINE)**

MOTOR PARAMETERS	UNITS	VALUE
MOTOR HORSEPOWER	HP RATED	3.3
KILOWATTS	KW RATED	2.5
MAX OPERATING SPEED	N MAX	4200
SPEED @ RATED TORQUE	RPM	3000
* CONTINUOUS RATED TORQUE @ 3000 RPM	IN-LBS [Nm]	89.1 (7.8)
* CONTINUOUS STALL TORQUE	IN-LBS [Nm]	83.0 (9.3)
CONTINUOUS LINE CURRENT	AMPS (RMS/Φ)	9.5
PEAK CURRENT	IN-LBS [Nm]	290.5 (32.7)
MAX THEORETICAL ACCEL	AMPS (RMS/Φ)	33.1
TORQUE SENSITIVITY	RAD/SEC <sup>2</sup>	58.780
BACK EMF (LINE TO LINE)	Vrms/Krpm	8.81 (0.991)
D.C. RESISTANCE (P-P)	OHMS	55.0
INDUCTANCE (P-P)	MILLIHENRIES	0.24
ROTOR INERTIA	g·m <sup>2</sup>	1.8
STATIC FRICTION	IN-LBS [Nm]	.00661 (0.0074)
	IN-LBS [Nm]	1.4 (0.16)

\*25°C AMBIENT WITH A MAXIMUM CASE TEMPERATURE OF 100°C ON MOTOR. MOTOR MOUNTED ON A 12" X 12" X 12" ALUMINUM HEATSINK. THERMOSTAT IN STATOR WINDINGS WILL OPEN IF WINDING TEMPERATURE EXCEEDS 155°C. THIS ALLOWS FOR AN APPROXIMATE +10% HEADROOM IN THE CONTINUOUS TORQUE RATING BEFORE THERMOSTAT OPENS.

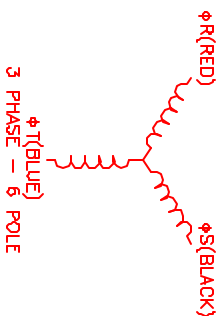
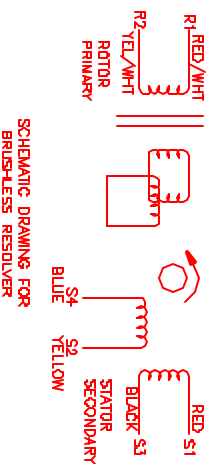
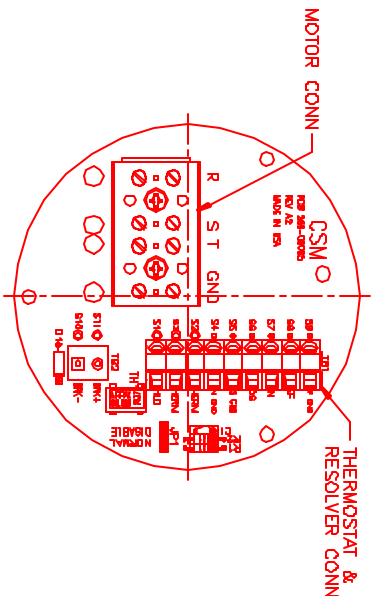
- MECHANICAL NOTES:**
1. AXIAL LOAD: 50 LBS MAX
  2. RADIAL LOAD: 100 LBS MAX @ 1" FROM FACE
  3. MOTOR SEALED TO IP65.
  4. MOTOR WEIGHT: 27.6 LBS. [ 12.5 kg]
  5. MOTOR FINISH: BLACK EPOXY
  6. MOTOR OUTPUT SHAFT: STAINLESS STEEL
  7. MILLIMETERS (INCHES)



**CONNECTION CHART**

TERMINAL	WIRE FUNCTION	WIRE COLOR
1	ΦR	RED
2	ΦS	BLACK
3	ΦT	BLUE
4	PE GND	GRN/YEL

RES/THERM	WIRE FUNCTION	WIRE COLOR
S9	REF GND	YEL/WHI
S8	REF	RED/WHI
S7	SIN	YELLOW
S6	COS	RED
S5	COS GND	BLACK
S4	SIN GND	BLUE
S3	THERM	BLACK
S2	THERM	BLACK
S1	RES SHLD	GRN/YEL



NO.	PART NUMBER	DESCRIPTION	QTY.
1	MPS Systems Corporation Automation Division		
TITLE: 1/2" SINE/230V/RES/NPT DATE: 12/30/99 DRAWN: MVS CHECKED: MVS APPROVED: MVS			
PART NUMBER: MPM1142ASG7G3N QUANTITY: 1/21			