

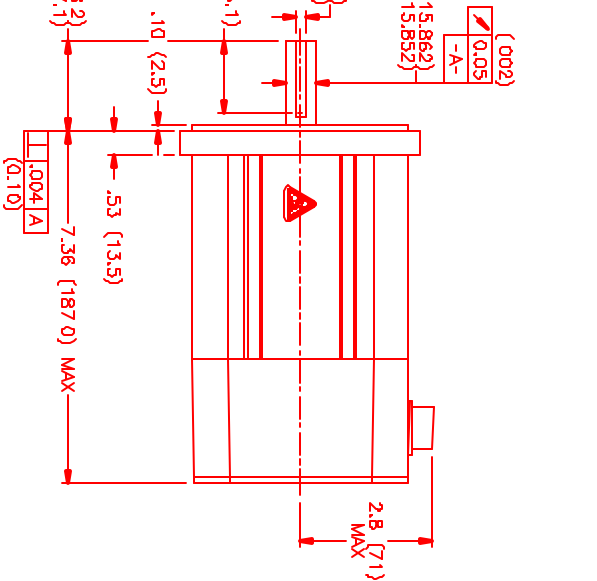
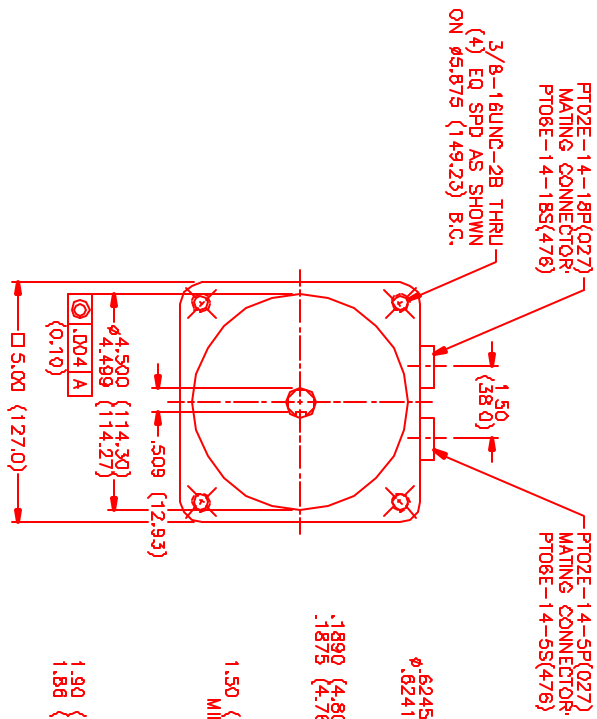
MOTOR DATA @ 230 VAC (TRAP)

MOTOR PARAMETERS	UNITS	VALUE
MOTOR HORSEPOWER	HP RATED	0.76
	KW RATED	0.56
MAX. OPERATING SPEED	N MAX	1900
SPEED @ RATED TORQUE	N RATED	1400
* CONTINUOUS RATED TORQUE	N-LEBS [Nm]	34.0 [3.8]
* CONTINUOUS STALL TORQUE	N-LEBS [Nm]	36.0 [4.3]
CONTINUOUS LINE CURRENT	AMPS	3.0
PEAK CURRENT	AMPS	114.0 [12.9]
MAX. THEORETICAL ACCEL	RAO/SEC ²	80,000
TORQUE SENSITIVITY	Kt N-LEBS/AMP/Nm/AMP	12.4 [1.40]
BACK EMF (LINE TO LINE)	Vrms/Krpm	110.0
D.C. RESISTANCE (P-P)	OHMS	13.1
INDUCTANCE (P-P)	MILLIHENRIES	64.6
ROTOR INERTIA	Jm	0.00191 [0.000211]
STATIC FRICTION	Tf	0.8 [0.09]

*25°C AMBIENT WITH A MAXIMUM CASE TEMPERATURE OF 100°C ON MOTOR. MOTOR MOUNTED ON A 12" X 12" X 1 1/2" ALUMINUM HEATSINK. THERMOSTAT IN STATOR WINDINGS WILL OPEN IF WINDING TEMPERATURE EXCEEDS 155°C. THIS ALLOWS FOR AN APPROXIMATE +10% HEADROOM IN THE CONTINUOUS TORQUE RATING BEFORE THERMOSTAT OPENS.

MECHANICAL NOTES:

1. AXIAL LOAD: 50 LBS MAX
2. RADIAL LOAD: 100 LBS MAX @ 1" FROM FACE
3. MOTOR SEALED TO IP65.
4. MOTOR WEIGHT: 13.4 LBS. [6.1 Kg]
5. MOTOR FINISH: BLACK EPOXY
6. MOTOR OUTPUT SHAFT: STAINLESS STEEL
7. INCHES (MILLIMETERS)



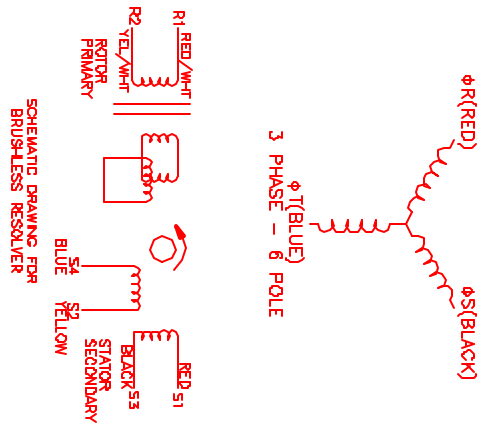
CONNECTION CHART
MOTOR CONNECTOR:
PTO2E-14-5P(027)
(270-00026)

MOTOR WIRE LEADS	WIRE COLOR
A	RED
B	BLACK
C	BLUE
D	GRN/YEL
E	-

RESOLVER/THERM CONNECTOR:
PTO2E-14-18P(027)
(270-00024)

MOTOR WIRE LEADS	RES/THERM WIRE LEADS
A	RES
B	REF
C	RES SHLD
D	GND
E	RES
F	REF
G	RES SHLD
H	GND
I	RES
J	REF
K	RES SHLD
L	GND
M	RES
N	REF
O	RES SHLD
P	GND

REV	REVISIONS	DATE	APP'D.
1	REVISION	4/13/00	AJS
PREL	MINI VARI		



NO.	PART NUMBER	DESCRIPTION	QTY.
1	PTO2E-14-18P(027)	MOTOR	1
2	PTO2E-14-5P(027)	MOTOR CONNECTOR	1
3	PTO2E-14-18P(027)	MOTOR CONNECTOR	1

NO.	PART NUMBER	DESCRIPTION	QTY.
1	PTO2E-14-18P(027)	MOTOR	1
2	PTO2E-14-5P(027)	MOTOR CONNECTOR	1
3	PTO2E-14-18P(027)	MOTOR CONNECTOR	1