

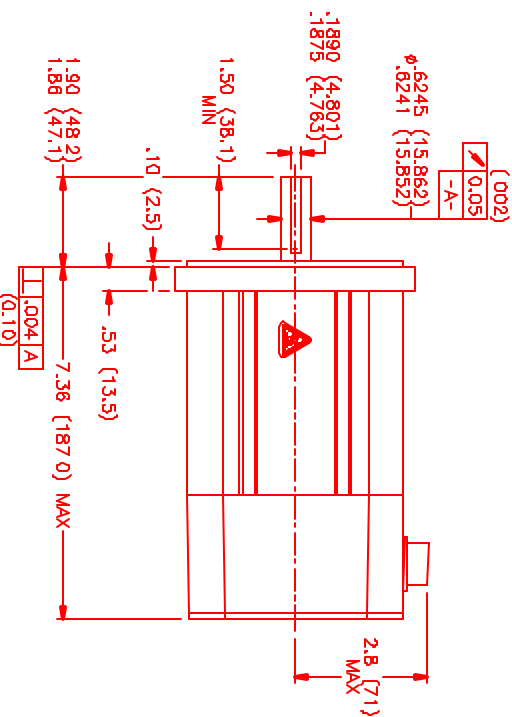
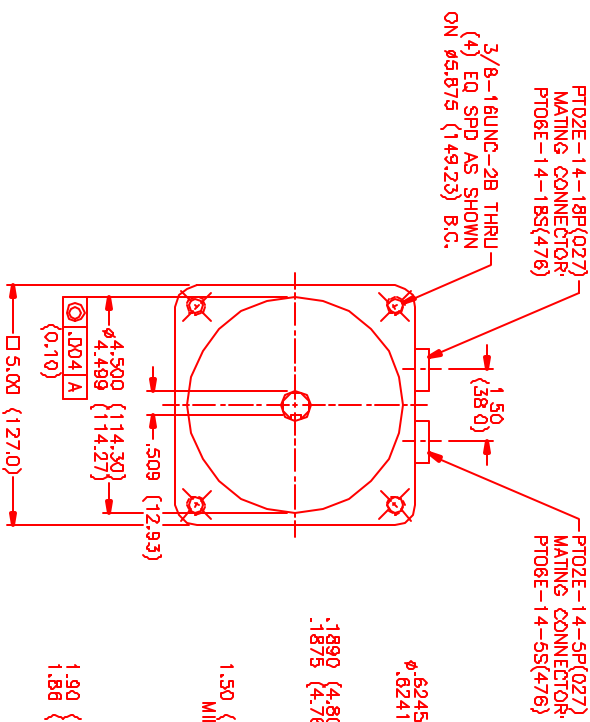
**MOTOR DATA @ 230 VAC (TRAP)**

MOTOR PARAMETERS	UNITS	VALUE
MOTOR HORSEPOWER	HP RATED	1.3
	KW RATED	1.0
MAX OPERATING SPEED	N MAX	3600
SPEED @ RATED TORQUE	N RATED	3000
* CONTINUOUS RATED TORQUE @ 3000 RPM	IN-LBS(Nm)	28.0(3.2)
* CONTINUOUS STALL TORQUE	IN-LBS(Nm)	38.0(4.3)
CONTINUOUS LINE CURRENT	AMPS	6.0
PEAK CURRENT	IN-LBS(Nm)	114.0(12.9)
	AMPS	18.0
MAX THEORETICAL ACCEL	RAO/SEC <sup>2</sup>	60,000
TORQUE SENSITIVITY	Kt IN-LBS/AMP(Nm/AMP)	6.2(1.71)
BACK EMF (LINE TO LINE)	Vrms/Krpm	55.0
D.C. RESISTANCE (P-P)	OHMS	3.2
INDUCTANCE (P-P)	MILLIHENRIES	15.3
ROTOR INERTIA	gm(IN-LBS-SEC <sup>2</sup> )(KG-M <sup>2</sup> )	.0019(.00021)
STATIC FRICTION	gf (IN-LBS)(Nm)	.8(.09)

\*25°C AMBIENT WITH A MAXIMUM CASE TEMPERATURE OF 100°C ON MOTOR. MOTOR MOUNTED ON A 12" X 12" X 1 1/2" ALUMINUM HEATSINK. THERMOSTAT IN STATOR WINDINGS WILL OPEN IF WINDING TEMPERATURE EXCEEDS 155°C. THIS ALLOWS FOR AN APPROXIMATE +10% HEADROOM IN THE CONTINUOUS TORQUE RATING BEFORE THERMOSTAT OPENS.

**MECHANICAL NOTES:**

1. AXIAL LOAD: 50 LBS MAX
2. RADIAL LOAD: 100 LBS MAX @ 1" FROM FACE
3. MOTOR SEALED TO IP65.
4. MOTOR WEIGHT: 13.4 LBS. [ 6.1 kg ]
5. MOTOR FINISH: BLACK EPOXY
6. MOTOR OUTPUT SHAFT: STAINLESS STEEL
7. INCHES (MILLIMETERS)



**CONNECTION CHART**

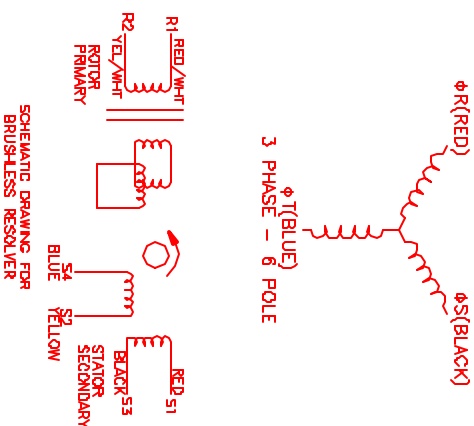
MOTOR CONNECTOR:  
PTO2E-14-5P(027)  
(270-00026)

RESOLVER/THERM CONNECTOR:  
PTO2E-14-18P(027)  
(270-00024)

MOTOR WIRE LEADS	RES/THERM WIRE LEADS
PIN	PIN
WIRE FUNCTION	WIRE FUNCTION
WIRE COLOR	WIRE COLOR
A	U
B	N
C	H
D	G
E	S

MOTOR WIRE LEADS	RES/THERM WIRE LEADS
A	U
B	N
C	H
D	G
E	S
F	R
G	E
H	D
I	P
J	A
K	B
L	C
M	J
N	K
O	L
P	M
Q	N
R	O
S	P
T	Q

REV	REVISIONS	DATE	APP'D.
1	REVISION	7/12/00	ALS
PREL	MINI VARI		



NO.	PART NUMBER	DESCRIPTION	QTY.
1	RESOLVER	RESOLVER	1
2	RESOLVER	RESOLVER	1
3	RESOLVER	RESOLVER	1
4	RESOLVER	RESOLVER	1
5	RESOLVER	RESOLVER	1
6	RESOLVER	RESOLVER	1
7	RESOLVER	RESOLVER	1
8	RESOLVER	RESOLVER	1
9	RESOLVER	RESOLVER	1
10	RESOLVER	RESOLVER	1
11	RESOLVER	RESOLVER	1
12	RESOLVER	RESOLVER	1
13	RESOLVER	RESOLVER	1
14	RESOLVER	RESOLVER	1
15	RESOLVER	RESOLVER	1
16	RESOLVER	RESOLVER	1
17	RESOLVER	RESOLVER	1
18	RESOLVER	RESOLVER	1
19	RESOLVER	RESOLVER	1
20	RESOLVER	RESOLVER	1
21	RESOLVER	RESOLVER	1
22	RESOLVER	RESOLVER	1
23	RESOLVER	RESOLVER	1
24	RESOLVER	RESOLVER	1
25	RESOLVER	RESOLVER	1
26	RESOLVER	RESOLVER	1
27	RESOLVER	RESOLVER	1
28	RESOLVER	RESOLVER	1
29	RESOLVER	RESOLVER	1
30	RESOLVER	RESOLVER	1
31	RESOLVER	RESOLVER	1
32	RESOLVER	RESOLVER	1
33	RESOLVER	RESOLVER	1
34	RESOLVER	RESOLVER	1
35	RESOLVER	RESOLVER	1
36	RESOLVER	RESOLVER	1
37	RESOLVER	RESOLVER	1
38	RESOLVER	RESOLVER	1
39	RESOLVER	RESOLVER	1
40	RESOLVER	RESOLVER	1
41	RESOLVER	RESOLVER	1
42	RESOLVER	RESOLVER	1
43	RESOLVER	RESOLVER	1
44	RESOLVER	RESOLVER	1
45	RESOLVER	RESOLVER	1
46	RESOLVER	RESOLVER	1
47	RESOLVER	RESOLVER	1
48	RESOLVER	RESOLVER	1
49	RESOLVER	RESOLVER	1
50	RESOLVER	RESOLVER	1
51	RESOLVER	RESOLVER	1
52	RESOLVER	RESOLVER	1
53	RESOLVER	RESOLVER	1
54	RESOLVER	RESOLVER	1
55	RESOLVER	RESOLVER	1
56	RESOLVER	RESOLVER	1
57	RESOLVER	RESOLVER	1
58	RESOLVER	RESOLVER	1
59	RESOLVER	RESOLVER	1
60	RESOLVER	RESOLVER	1
61	RESOLVER	RESOLVER	1
62	RESOLVER	RESOLVER	1
63	RESOLVER	RESOLVER	1
64	RESOLVER	RESOLVER	1
65	RESOLVER	RESOLVER	1
66	RESOLVER	RESOLVER	1
67	RESOLVER	RESOLVER	1
68	RESOLVER	RESOLVER	1
69	RESOLVER	RESOLVER	1
70	RESOLVER	RESOLVER	1
71	RESOLVER	RESOLVER	1
72	RESOLVER	RESOLVER	1
73	RESOLVER	RESOLVER	1
74	RESOLVER	RESOLVER	1
75	RESOLVER	RESOLVER	1
76	RESOLVER	RESOLVER	1
77	RESOLVER	RESOLVER	1
78	RESOLVER	RESOLVER	1
79	RESOLVER	RESOLVER	1
80	RESOLVER	RESOLVER	1
81	RESOLVER	RESOLVER	1
82	RESOLVER	RESOLVER	1
83	RESOLVER	RESOLVER	1
84	RESOLVER	RESOLVER	1
85	RESOLVER	RESOLVER	1
86	RESOLVER	RESOLVER	1
87	RESOLVER	RESOLVER	1
88	RESOLVER	RESOLVER	1
89	RESOLVER	RESOLVER	1
90	RESOLVER	RESOLVER	1
91	RESOLVER	RESOLVER	1
92	RESOLVER	RESOLVER	1
93	RESOLVER	RESOLVER	1
94	RESOLVER	RESOLVER	1
95	RESOLVER	RESOLVER	1
96	RESOLVER	RESOLVER	1
97	RESOLVER	RESOLVER	1
98	RESOLVER	RESOLVER	1
99	RESOLVER	RESOLVER	1
100	RESOLVER	RESOLVER	1